

ANCILLARY PRODUCTS

Epitope Tags • Loading Controls
Control Proteins/Peptides • Accessory Products



 **NOVUS**
BIOLOGICALS®
Today's Research. Tomorrow's Discovery.

Contact Info:

Orders, Pricing, Stock Status:
Orders@novusbio.com

Technical Service:
technical@novusbio.com

Table of Contents

Antibody Concierge	1
Loading Controls	2
How To Series	3
Epitope Tags	3-8
Antibody Grants.....	8
Controls: Total Proteins.....	9
Controls: Membrane Proteins....	9
Controls: Lysates.....	9
Controls: Recombinant Proteins ..	9
Controls: Peptides	9
Western Blot Products.....	9
IHC Products	9
In The News	10

Application Key

- ELISA** - Elisa
- FACTS** - Fluorescent Activated Cell Sorting
- ICC** - Immunocytochemistry
- IF** - Immunofluorescence
- IHC** - Immunohistochemistry
- IHC-Fr** - Immunohistochemistry Frozen
- IHC-P** - Immunohistochemistry Paraffin
- IP** - Immunoprecipitation
- WB** - Western Blot

Reactivity Key

- | | |
|------------------------|------------------------|
| Av - Avian | Hu - Human |
| Ba - Bacteria | Mu - Mouse |
| Bv - Bovine | Po - Porcine |
| Ca - Canine | Rb - Rabbit |
| Ch - Chicken | Rt - Rat |
| Dr - Drosophila | Sh - Sheep |
| Fe - Feline | Ye - Yeast |
| Fi - Fish | Xp - Xenopus |
| Gt - Goat | Zp - Zebra Fish |
| Gp - Guinea Pig | Ze - Zebra Fish |
| Ha - Hamster | |



Antibody Concierge



- Can't find the antibody you need?
- Tired of doing the search yourself?
- Don't know where to start?

Have Novus Biologicals find the antibody you need, for free!

Simply fill out this form and we will contact you within 2 business days with the results. If we don't have the antibody, we will tell you who does! If the antibody doesn't exist, we will tell you that as well.

Name _____

Institute _____

Address _____

Address _____

City _____

State / Province / Region _____

Postal / Zip Code _____

Country _____

Phone _____

Email _____

Protein Name _____

Species Reactivity _____

Applications to Be Used In _____

Conjugation _____

Genbank Accession Number _____

Published Reference Required (If required, we will not recommend products that otherwise meet your needs.): (Check one)

Yes - References are required

No - References are not required

Images Required (If required, we will not recommend products that otherwise meet your needs.): (Check one)

Yes - Images are required

No - Images are not required

And, don't forget our Novus Antibody Grant! If you find out that your antibody doesn't exist, you can submit it to our Novus Antibody Grant Program and you may get your antibody made for FREE!

Fax: 303.730.1966

Loading Controls

Actin (MW ~ 42 kDa)

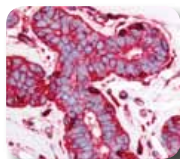
Catalog#	Product	Host	Type	Application	Species
NB100-906	Actin SuperNovus Pack (Contains NB600-532 and NB600-533)			WB	Hu, Mu
NB600-531	Actin, alpha (smooth muscle)	Polyclonal	Rabbit	ELISA, IHC-P, WB	Ba, Bv, Ch, Hu, Rt, Rb, Po
NB600-505	Actin, beta	Polyclonal	Rabbit	WB, IF	Ch, Dr, Hu, Mu, Rt, Xp
NB600-532	Actin, beta	Polyclonal	Rabbit	WB, IP	Hu, Mu
NB600-532SS	Actin, beta, Sample Size	Polyclonal	Rabbit	WB, IP	Hu, Mu
NB600-533	Actin, beta	Polyclonal	Rabbit	WB, IP	Hu, Mu
NB600-533SS	Actin, beta, Sample Size	Polyclonal	Rabbit	WB, IP	Hu, Mu
NB600-503	Actin, beta	Polyclonal	Rabbit	IF, IP, WB	Hu, Mu, Mk, Rt
NB110-67828	Actin, beta (AC-15 purified)	Monoclonal	Mouse	ELISA, ICC, IF, IHC, WB	Bv, Ca, Ch, Dr, Hu, Mu, Po, Rt, Rb, Gp, Fe, Fi, Sh
NB600-501	Actin, beta (AC-15)	Monoclonal	Mouse	ELISA, IHC, WB, ICC	Bv, Ca, Ch, Dr, Hu, Mu, Po, Rt, Rb, Gp, Fe, Fi, Sh
NB120-6277	Actin, beta (AC-15), FITC	Monoclonal	Mouse	ICC, IF	Bv, Ca, Ch, Dr, Hu, Mu, Po, Rt, Rb, Gp, Fe, Fi, Sh

Actin, Beta NB600-503



Detection of beta actin using NB600-503.

Actin, Beta NB600-501



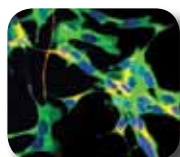
Staining of Breast, Epithelium using NB600-501.

GAPDH NB300-327



Detection of GAPDH in mouse liver using NB300-327.

GAPDH NB300-221



Staining of human neuroblastoma line Sh-SY5Y using NB300-221.

GAPDH (MW ~ 38 kDa)

Catalog#	Product	Host	Type	Application	Species
NB300-322	GAPDH	Polyclonal	Rabbit	WB, ICC, IF	Hu, Mu
NB300-323	GAPDH	Polyclonal	Rabbit	WB	Hu, Mu
NB300-324	GAPDH	Polyclonal	Rabbit	WB	Hu, Mu
NB300-325	GAPDH	Polyclonal	Rabbit	WB	Hu, Mu
NB300-326	GAPDH	Polyclonal	Rabbit	WB	Mu
NB110-40628	GAPDH	Polyclonal	Rabbit	IHC-P	Hu, Mu
NB110-40629	GAPDH	Polyclonal	Rabbit	IHC-P	Hu, Mu
NB100-2047	GAPDH	Polyclonal	Chicken	WB	Hu, Mu, Rt
NB300-320	GAPDH	Polyclonal	Goat	WB, IHC-P, PEP-ELISA	Hu, Mu
NB300-327	GAPDH	Polyclonal	Rabbit	WB, IF	Hu, Bv, Po, Mu, Rt, Av
NB300-327SS	GAPDH, Sample Size	Polyclonal	Rabbit	IF, WB	Bv, Hu, Mu, Po, Rt, Av
NB300-221	GAPDH (1D4)	Monoclonal	Mouse	IF, WB	Bv, Hu, Mu, Po, Rt, Av
NB300-221SS	GAPDH (1D4), Sample Size	Monoclonal	Mouse	IF, WB	Bv, Hu, Mu, Po, Rt, Av
NB300-328	GAPDH (2D4A7)	Monoclonal	Mouse	WB, ELISA	Hu, Mu
NB300-328SS	GAPDH (2D4A7), Sample Size	Monoclonal	Mouse	WB, ELISA	Hu, Mu
NB600-502	GAPDH (6C5)	Monoclonal	Mouse	ELISA, WB, ICC, IHC-Fr	Ca, Ch, Hu, Mu, Rt, Rb, Xp
NB300-285	GAPDH (NB615)	Monoclonal	Mouse	WB	Bv, Ca, Ch, Ha, Hu, Mu, Po, Rt, Rb
NB300-285SS	GAPDH (NB615), Sample Size	Monoclonal	Mouse	WB	Bv, Ca, Ch, Ha, Hu, Mu, Po, Rt, Rb

Prolifin (MW ~ 12-15 kDa)

Catalog#	Product	Host	Type	Application	Species
NB200-162	Prolifin	Polyclonal	Rabbit	WB	Ch, Hu, Mu, Po, Rt

Tubulin (MW ~ 50 kDa)

Catalog#	Product	Host	Type	Application	Species
NB600-506	Tubulin (Y1L1/2)	Monoclonal	Rat	ELISA, IP, WB, IHC-Fr, RIA	Ma, Ye
NB100-1639	Tubulin (YOL1/34)	Monoclonal	Rat	ELISA, IF, IHC-P, WB, RI	Ma, Ye
NB100-690	Tubulin, alpha (DM1A)	Monoclonal	Mouse	IF, IP, WB, IHC-P	Bv, Ch, Hu, Mu, Po, Rt, Gp, Xp
NB600-936	Tubulin, beta	Polyclonal	Rabbit	WB, ICC	Hu, Mu, Rt, Ch, Ha, Po, Xp, Ze
NB600-936SS	Tubulin, beta, Sample Size	Polyclonal	Rabbit	WB	Hu, Mu, Rt, Ch, Ha, Po, Xp, Ze
NB500-572	Tubulin, gamma (2H11), Dyomics 647	Monoclonal	Mouse	ICC	Ch, Hu, Mu, Po, Rt, Pl, Xp

VDAC1 (Mitochondrial Loading Control)

Catalog#	Product	Host	Type	Application	Species
NB100-695	VDAC1	Polyclonal	Rabbit	ELISA, WB	Hu, Mu, Av, Ma, Fi

Epitope Tags and Fusion Proteins

AU1 Tag Antibodies

Catalog#	Product	Host	Type	Application	Size
NB600-453	AU1 tag	Rabbit	Polyclonal	ELISA, ICC, WB	0.1 ml
NB600-452	AU1 tag	Goat	Polyclonal	ELISA, ICC, WB	0.1 ml
NB600-455	AU1 tag	Rabbit	Polyclonal	ELISA, ICC, WB	1 ml
NB600-454	AU1 tag	Goat	Polyclonal	ELISA, ICC, WB	1 ml
NB600-400	AU1 tag, Agarose Immobilized	Goat	Polyclonal	IP	0.4 ml
NB600-456	AU1 tag, FITC	Goat	Polyclonal	ICC	0.1 ml
NB600-457	AU1 tag, HRP	Goat	Polyclonal	ELISA, WB, ICC	0.1 ml

AU1 is a commonly used epitope tag engineered onto the N- or C- terminus of a protein of interest so that the tagged protein can be analyzed and visualized by immunochemical methods. The recognized AU1 sequence represents the amino acid sequence DTYRYI, derived from the major capsid protein of bovine papillomavirus-1 (BPV-1).

AU5 is a commonly used epitope tag engineered onto the N- or C- terminus of a protein of interest so that the tagged protein can be analyzed and visualized by immunochemical methods. The recognized AU5 epitope represents the amino acid sequence TDFYLK.

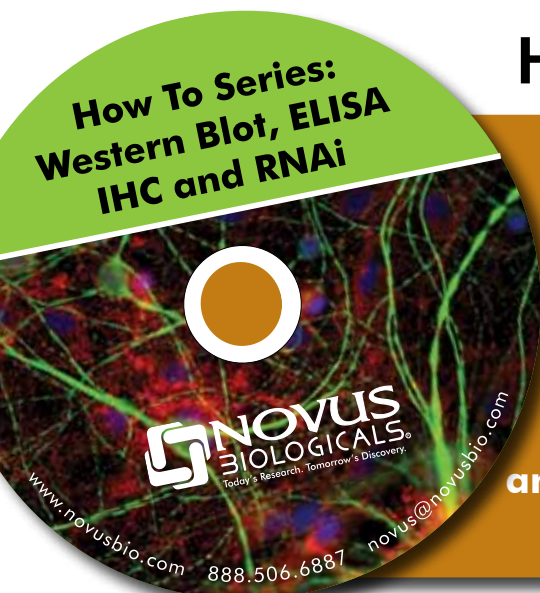
AU5 Tag Antibodies

Catalog#	Product	Host	Type	Application	Size
NB600-458	AU5 tag	Rabbit	Polyclonal	ELISA, ICC, WB	0.1 ml
NB600-461	AU5 tag	Goat	Polyclonal	ELISA, ICC, WB	0.1 ml
NB600-460	AU5 tag	Rabbit	Polyclonal	ELISA, ICC, WB	1 ml
NB600-459	AU5 tag	Goat	Polyclonal	ELISA, ICC, WB	1 ml
NB600-439	AU5 tag, Agarose Immobilized	Goat	Polyclonal	IP	0.4 ml
NB600-463	AU5 tag, FITC	Goat	Polyclonal	IHC-Fr	0.1 ml
NB600-462	AU5 tag, HRP	Goat	Polyclonal	ELISA, ICC, WB	0.1 ml

Beta Galactosidase Antibodies

Catalog#	Product	Host	Type	Application	Size
NB600-305	Beta-galactosidase	Rabbit	Polyclonal	ELISA, IP, WB, IHC	1.0 mg
NB100-2045	Beta-galactosidase	Chicken	Polyclonal	ELISA, WB	0.25 mg
NB500-334	Beta-galactosidase (BG-02)	Mouse	Monoclonal	WB, ICC	0.1 mg
NB120-3291	Beta-galactosidase (BGAL01)	Mouse	Monoclonal	IP, WB	0.5 ml
NB100-2619	Beta-galactosidase (DC1 4C7)	Mouse	Monoclonal	ELISA, IF, WB, ICC	0.1 mg
NB120-6645	Beta-galactosidase, Biotin	Rabbit	Polyclonal	ELISA, IHC-Fr, IF, IP, WB	1 mg
NB120-6641	Beta-galactosidase, FITC	Rabbit	Polyclonal	IF, IHC-Fr	1.0 mg
NB120-6646	Beta-galactosidase, HRP	Rabbit	Polyclonal	ELISA, IP, WB, IHC-Fr	1.0 mg

Beta galactosidase is coded by a gene (lac z) in the lac operon of Escherichia coli. It is a metalloenzyme that splits lactose into glucose and galactose. It hydrolyzes terminal, non-reducing beta-D-galactose residues in beta-D-galactosides. Activation by cations seems to be substrate dependent. K⁺, Na⁺, NH₄⁺, Rb⁺, Cs⁺ and Mn⁺⁺ all activate enzyme activity based upon the substrate used.



How To Series CD's

Do you need to freshen up your IHC, RNAi Western Blot or ELISA skills?
A little fuzzy on the theory?
Have students to teach?

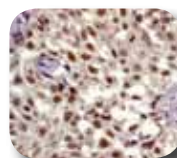
**Check out our How To Series:
Go to www.novusbio.com/support
and click on Downloads to download our
four presentations.**

C-MYC Antibodies

The c-myc epitope tag is a commonly used epitope tag engineered onto the N- or C- terminus of a protein of interest so that the tagged protein can be analyzed and visualized using immunochemical methods.

Catalog#	Product	Host	Type	Application	Size
NB600-334	c-myc	Chicken	Polyclonal	ELISA, WB, IHC, ICC	0.1 ml
NB600-337	c-myc	Chicken	Polyclonal	ELISA, WB, IHC, ICC	1 ml
NB600-335	c-myc	Goat	Polyclonal	ELISA, IP, WB, IHC-Fr, ICC	0.1 ml
NB600-338	c-myc	Goat	Polyclonal	ELISA, IHC, WB, ICC	1 ml
NB600-336	c-myc	Rabbit	Polyclonal	ELISA, WB, IHC-P, IHC-Fr, ICC	0.1 ml
NB600-339	c-myc	Rabbit	Monoclonal	ELISA, WB, IHC, ICC	1 ml
NB100-74388	c-myc	Sheep	Polyclonal	IF, IP, WB	0.1 ml
NB600-302	c-myc (9E10)	Mouse	Monoclonal	FACS, ELISA, IHC, IF, IP, WB	0.1 mg
NB110-57173	c-myc (E203) [pT58/S62]	Rabbit	Monoclonal	ICC, IP, WB	0.1 ml
NB110-57172	c-myc (Y69)	Rabbit	Monoclonal	ICC, IHC, IP, WB	0.1 ml
NB600-342	c-myc, Agarose Immobilized	Goat	Polyclonal	IP	0.4 ml
NB600-340	c-myc, FITC	Goat	Polyclonal	IHC, ICC	0.1 ml
NB600-341	c-myc, HRP	Goat	Polyclonal	ELISA, IHC, WB	0.1 ml
NB600-390	c-myc, HRP	Rabbit	Polyclonal	ELISA, WB, ICC	0.1 ml

C-MYC NB110-57172



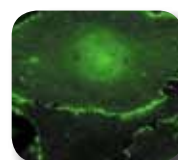
Staining of paraffin-embedded human skin carcinoma using NB110-57172.

C-MYC NB110-57173



Detection of phospho c-myc in A431 cell lysate using NB110-57173.

C-MYC NB600-336



Immunofluorescent staining of transfected endothelial cells using NB600-336.

C-MYC NB110-57172



Immunofluorescent staining of HeLa cells using anti-c-Myc (N-term) RabMAB.

ECS Antibodies

Catalog#	Product	Host	Type	Application	Size
NB600-343	Enterokinase Cleavage Site	Chicken	Polyclonal	ELISA, WB, IHC, ICC	0.1 ml
NB600-344	Enterokinase Cleavage Site	Goat	Polyclonal	ELISA, IP, WB, ICC	0.1 ml
NB600-345	Enterokinase Cleavage Site	Rabbit	Polyclonal	ELISA, IHC, WB, ICC	0.1 ml
NB600-346	Enterokinase Cleavage Site	Chicken	Polyclonal	ELISA, WB, IHC, ICC	1 ml
NB600-347	Enterokinase Cleavage Site	Goat	Polyclonal	ELISA, WB, IHC, ICC	1 ml
NB600-348	Enterokinase Cleavage Site	Rabbit	Polyclonal	ELISA, WB, IHC, ICC	1 ml
NB600-351	Enterokinase Cleavage Site, Agarose Immobilized	Goat	Polyclonal	IP	0.4 ml
NB600-349	Enterokinase Cleavage Site, FITC	Goat	Polyclonal	IHC, ICC	0.1 ml
NB600-350	Enterokinase Cleavage Site, HRP	Goat	Polyclonal	ELISA, WB, IHC, ICC	0.1 ml
NB600-389	Enterokinase Cleavage Site, HRP	Rabbit	Polyclonal	ELISA, WB, ICC	0.1 ml

The ECS epitope tag is commonly engineered onto the N- or C- terminus of a protein of interest so that the tagged protein can be analyzed and visualized using immunochemical methods. The recognized ECS epitope represents the enterokinase cleavage site DDDDK.

The E-Tag is a popular epitope tag engineered onto the N- or C- terminus of a protein of interest so that the tagged protein can be analyzed and visualized using immunochemical methods. The recognized E-tag epitope represents the peptide sequence GAPVPYPDPLEPR.

E-Tag Antibodies

Catalog#	Product	Host	Type	Application	Size
NB600-524	E-Tag	Goat	Polyclonal	ELISA, WB, ICC	0.1 ml
NB600-527	E-Tag	Rabbit	Polyclonal	ELISA, WB, ICC	0.1 ml
NB600-518	E-Tag	Goat	Polyclonal	ELISA, WB, ICC	1 ml
NB600-519	E-Tag	Rabbit	Polyclonal	ELISA, WB, ICC	1 ml
NB600-831	E-Tag, Agarose Immobilized	Goat	Polyclonal	IP	0.4 ml
NB600-525	E-Tag, FITC	Goat	Polyclonal	ICC	0.1 ml
NB600-528	E-Tag, HRP	Rabbit	Polyclonal	ELISA, WB, ICC	0.1 ml
NB600-526	E-Tag, HRP	Goat	Polyclonal	ELISA, WB, ICC	0.1 ml

GFP Antibodies

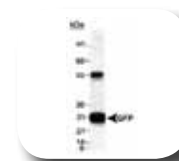
GFP has been used widely as a reporter protein for gene expression in eukaryotic and prokaryotic organisms, and as a protein tag in cell culture and in multicellular organisms. As a fusion tag, GFP can be used to localize proteins, to study their movement or to research the dynamics of the subcellular compartments where these proteins are targeted. GFP technology has revealed considerable new insights into the physiological activities of living cells.

**GFP
NB600-601**



Detection of GFP used to spike HeLa whole cell extracts using NB600-601.

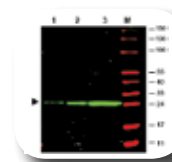
**GFP
NB600-303**



Western analysis of recombinant GFP.

Catalog#	Product	Host	Type	Application	Size
NB600-601	GFP	Rabbit	Polyclonal	ELISA, IHC, WB	0.05 mg
NB600-601, Sample Size	GFP	Rabbit	Polyclonal	ELISA, IHC, WB	0.001 mg
NB100-1183	GFP	Rabbit	Polyclonal	FACS	0.05 mg
NB100-1365	GFP	Rabbit	Polyclonal	ELISA, IHC, WB	0.1 mg
NB100-1184	GFP	Rabbit	Polyclonal	ELISA, IHC, WB	0.1 mg
NB110-40670	GFP	Mouse	Monoclonal	ELISA, IHC, WB	1 mg
NB110-57004	GFP	Rabbit	Monoclonal	WB	0.1 ml
NB100-1614	GFP	Chicken	Polyclonal	IHC, WB	0.1 ml
NB600-303	GFP	Rabbit	Polyclonal	IP, WB, ICC, IHC-P	0.05 ml
NB600-597	GFP	Mouse	Monoclonal	ELISA, IHC, WB	0.1 mg
NB100-1770	GFP	Goat	Polyclonal	ELISA, WB	0.1 mg
NB600-308	GFP	Rabbit	Polyclonal	IHC, IF, IP, WB, ICC	0.05 ml
NB600-309	GFP	Rabbit	Polyclonal	ELISA, WB	0.05 ml
NB600-310	GFP	Rabbit	Polyclonal	ELISA, WB	0.05 ml
NB100-74423	GFP (F56-6A1.2.3)	Mouse	Monoclonal	WB	0.1 mg
NB600-838	GFP (GFPO1 (B34))	Mouse	Monoclonal	WB	0.5 ml
NB600-1502	GFP, Alkaline Phosphatase	Goat	Polyclonal	ELISA, IHC, WB	1 mg
NB100-1678	GFP, Biotin	Goat	Polyclonal	ELISA, WB, IHC-P	0.2 mg
NB100-1771	GFP, FITC	Goat	Polyclonal	FACS, IF, IHC-Fr	0.1 ml
NB600-313	GFP, HRP	Goat	Polyclonal	ELISA, IHC, WB	0.1 mg
NB120-6660	GFP, Texas Red	Goat	Polyclonal	ELISA, IP, WB	0.1 mg

**GFP
NB600-597**



Western analysis of recombinant GFP.

**GFP
NB100-1614**



Staining of transgenic mice tissue expressing the GFP gene product using NB100-1614.

Glu-Glu Antibodies

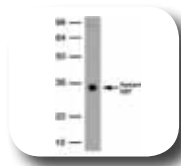
Catalog#	Product	Host	Type	Application	Size
NB600-352	Glu-glu	Chicken	Polyclonal	ELISA, WB, IHC, ICC	0.1 ml
NB600-353	Glu-glu	Goat	Polyclonal	ELISA, WB, IHC, ICC	0.1 ml
NB600-354	Glu-glu	Rabbit	Polyclonal	ELISA, WB, IHC, ICC	0.1 ml
NB600-355	Glu-glu	Chicken	Polyclonal	ELISA, WB, IHC, ICC	1 ml
NB600-356	Glu-glu	Goat	Polyclonal	ELISA, WB, IHC, ICC	1 ml
NB600-357	Glu-glu	Rabbit	Polyclonal	ELISA, WB, IHC, ICC	1 ml
NB600-360	Glu-glu, Agarose Immobilized	Goat	Polyclonal	IP	0.4 ml
NB600-358	Glu-glu, FITC	Goat	Polyclonal	IHC, ICC	0.1 ml
NB600-392	Glu-glu, HRP	Rabbit	Polyclonal	ELISA, WB, ICC	0.1 ml
NB600-359	Glu-glu, HRP	Goat	Polyclonal	ELISA, WB, IHC, ICC	0.1 ml

The Glu-Glu epitope tag is commonly engineered onto the N- or C- terminus of a protein of interest so that the tagged protein can be analyzed and visualized using immunochemical methods. The recognized Glu-Glu epitope represents amino acid residues 314-319, EYMPME, of middle T antigen of mouse polyomavirus.

GST Antibodies

GST (glutathione S-transferase) is commonly engineered onto the N- or C- terminus of a protein of interest to create fusion proteins that can be purified, visualized and analyzed via the properties of the GST tag.

GST NB600-446



Detection of GST in HeLa whole cell lysates.

Catalog#	Product	Host	Type	Application	Size
NB600-325	GST	Goat	Polyclonal	ELISA, IP, WB, ICC	0.1 ml
NB600-326	GST	Rabbit	Polyclonal	ELISA, IHC, WB, ICC	0.1 ml
NB600-327	GST	Chicken	Polyclonal	ELISA, WB, IHC, ICC	0.1 ml
NB600-328	GST	Goat	Polyclonal	ELISA, WB, IHC, ICC	1 ml
NB600-329	GST	Rabbit	Polyclonal	ELISA, WB, IHC, ICC	1 ml
NB600-330	GST	Chicken	Polyclonal	ELISA, WB, IHC, ICC	1 ml
NB600-446	GST (3G10/1B3)	Mouse	Monoclonal	IHC, IP, WB, IF	0.1 mg
NB600-333	GST, Agarose Immobilized	Goat	Polyclonal	IP	0.1 mg
NB600-599	GST, Biotin	Goat	Polyclonal	ELISA, IHC, WB, IM	1 mg
NB600-331	GST, FITC	Goat	Polyclonal	IHC, ICC	0.1 ml
NB600-591	GST, FITC	Goat	Polyclonal	FACS, IM	0.2 ml
NB600-598	GST, HRP	Goat	Polyclonal	ELISA, WB	2 mg
NB600-388	GST, HRP	Rabbit	Polyclonal	ELISA, WB, ICC	0.1 ml
NB600-332	GST, HRP	Goat	Polyclonal	ELISA, WB, IHC, ICC	0.1 ml

HA Tag Antibodies

Catalog#	Product	Host	Type	Application	Size
NB600-361	HA tag	Chicken	Polyclonal	ELISA, WB, ICC	0.1 ml
NB600-362	HA tag	Goat	Polyclonal	ELISA, IHC, IP, WB, ICC	0.1 ml
NB600-363	HA tag	Rabbit	Polyclonal	ChIP, ELISA, WB, ICC, IP	0.1 ml
NB600-364	HA tag	Chicken	Polyclonal	ELISA, WB, IHC, ICC	1 ml
NB600-365	HA tag	Goat	Polyclonal	ELISA, WB, IHC, ICC	1 ml
NB600-366	HA tag	Rabbit	Polyclonal	ELISA, WB, ICC	1 ml
NB600-369	HA tag, Agarose Immobilized	Goat	Polyclonal	IP	0.4 ml
NB600-367	HA tag, FITC	Goat	Polyclonal	IHC, ICC	0.1 ml
NB600-391	HA tag, HRP	Rabbit	Polyclonal	ELISA, WB, ICC	0.1 ml
NB600-368	HA tag, HRP	Goat	Polyclonal	ELISA, IHC, WB, ICC	0.1 ml

The HA (human influenza hemagglutinin) epitope tag is frequently engineered onto the N- or C-terminus of a protein of interest so that the tagged protein can be analyzed and visualized using immunochemical methods. The recognized HA epitope represents the amino acid sequence YPYDVPDYA.

The 6-His polyhistidine tag is a protein motif that consists of 6 or more histidine residues (H-H-H-H-H-H) engineered onto the N- or C-terminus of a protein of interest. Polyhistidine tags are useful for the detection and analysis of expressed recombinant proteins using immunoblotting, immunoprecipitation, and immunostaining techniques.

Histidine Tag (6-His) Antibodies

Catalog#	Product	Host	Type	Application	Size
NB600-318	Histidine (6-His)	Rabbit	Polyclonal	ELISA, WB, ICC	0.1 ml
NB600-316	Histidine (6-His)	Chicken	Polyclonal	ELISA, WB, IHC, ICC	0.1 ml
NB600-317	Histidine (6-His)	Goat	Polyclonal	ELISA, IP, WB, ICC, IHC-P	0.1 ml
NB600-319	Histidine (6-His)	Chicken	Polyclonal	ELISA, WB, IHC, ICC	1 ml
NB600-320	Histidine (6-His)	Goat	Polyclonal	ELISA, IHC, IP, WB, ICC	1 ml
NB600-321	Histidine (6-His)	Rabbit	Polyclonal	ELISA, WB, ICC	1 ml
NB600-324	Histidine (6-His), Agarose Immobilized	Goat	Polyclonal	IP	0.4 ml
NB600-322	Histidine (6-His), FITC	Goat	Polyclonal	ICC	0.1 ml
NB600-1057	Histidine (6-His), FITC	Rabbit	Polyclonal	ELISA, WB	0.1 mg
NB600-1257	Histidine (6-His), FITC	Chicken	Polyclonal	ELISA, WB	0.1 mg
NB600-323	Histidine (6-His), HRP	Goat	Polyclonal	ELISA, WB, ICC	0.1 ml
NB600-393	Histidine (6-His), HRP	Rabbit	Polyclonal	ELISA, WB, ICC	0.1 ml
NB600-1474	Histidine (6-His), HRP	Chicken	Polyclonal	ELISA, WB	0.1 mg

HSV Antibodies

Catalog #	Product	Host	Type	Application	Size
NB600-513	HSV	Goat	Polyclonal	ELISA, WB, ICC	0.1 ml
NB600-516	HSV	Rabbit	Polyclonal	ELISA, WB, ICC	0.1 ml
NB600-522	HSV	Goat	Polyclonal	ELISA, WB, ICC	1 ml
NB600-523	HSV	Rabbit	Polyclonal	ELISA, WB, ICC	1 ml
NB600-947	HSV, Agarose Immobilized	Goat	Polyclonal	IP	0.4 ml
NB600-514	HSV, FITC	Goat	Polyclonal	ICC	0.1 ml
NB600-515	HSV, HRP	Goat	Polyclonal	ELISA, WB, ICC	0.1 ml
NB600-517	HSV, HRP	Rabbit	Polyclonal	ELISA, WB, ICC	0.1 ml

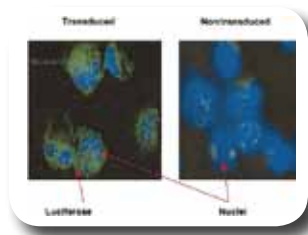
The HSV (herpes simplex virus) epitope tag is frequently engineered onto the N- or C- terminus of a protein of interest so that the tagged protein can be analyzed and visualized using immunochemical methods. The recognized HSV peptide epitope represents the amino acid sequence SQPELAPEDPED.

Luciferase Antibodies

Catalog #	Product	Host	Type	Application	Size
NB100-2011	Luciferase	Rabbit	Polyclonal	ELISA, WB	2 mg
NB100-1677	Luciferase	Goat	Polyclonal	ELISA, IHC, WB	0.5 ml
NB600-624	Luciferase	Rabbit	Polyclonal	ELISA, IP, WB	5 mg
NB600-852	Luciferase	Rabbit	Polyclonal	ELISA, WB	0.1 mg
NB120-18595	Luciferase	Chicken	Polyclonal	ELISA, WB	0.05 mg
NB110-17348	Luciferase	Rabbit	Polyclonal	IF	0.25 ml
NB600-307	Luciferase (Luci 21 1-107)	Mouse	Monoclonal	IF, WB	0.1 ml
NB600-307SS	Luciferase (Luci 21 1-107)	Mouse	Monoclonal	IF, WB	0.025 ml
NB100-64800	Luciferase (LUC-Y)	Mouse	Monoclonal	ELISA, FACS, IHC-Fr, WB	0.1 mg
NB120-634	Luciferase, Biotin	Goat	Polyclonal	ELISA, IP, WB	0.1 ml
NB100-2023	Luciferase, FITC	Rabbit	Polyclonal	ICC	2 mg
NB100-1676	Luciferase, HRP	Goat	Polyclonal	ELISA, IHC, WB	0.2 ml

Luciferase is a luminescent enzyme, mostly known for its role as a reporter protein.

Luciferase NB600-307



Detection of luciferase expression in CD34+ cells by immunohistochemistry.

Protein A Antibodies

Catalog #	Product	Host	Type	Application	Size
NB120-7243	Protein A	Goat	Polyclonal	ELISA, IP	10 mg
NB120-7246	Protein A, Biotin	Goat	Polyclonal	ELISA, IHC-Fr, IF, WB	1 mg
NB120-7244	Protein A, FITC	Goat	Polyclonal	FACS, IF	1 mg
NB600-1223	Protein A, HRP	Goat	Polyclonal	ELISA, IHC, IP, WB	2 mg
NB120-7247	Protein A, Texas Red	Goat	Polyclonal	FACS, IF	1 mg

Protein A is a surface protein of *S.aureus* which binds IgG molecules by their Fc region. In serum, the bacteria will bind IgG molecules in the wrong orientation on their surface which hinders opsonization and phagocytosis. Mutants of *S. aureus* lacking protein A are more efficiently phagocytosed in vitro, and mutants in infection models have diminished virulence. Due to its affinity for the Fc region of many mammalian immunoglobulins, protein A is considered a universal reagent in biochemistry and immunology.

The S-Tag epitope tag is commonly engineered onto the N- or C- terminus of a protein of interest so that the tagged protein can be analyzed and visualized using immunochemical methods. The recognized S-Tag epitope represents the amino acid sequence KETAAAKFERQHMDSD derived from pancreatic ribonuclease A.

S-Tag Antibodies

Catalog #	Product	Host	Type	Application	Size
NB600-529	S-Tag	Goat	Polyclonal	ELISA, WB, ICC	0.1 ml
NB600-511	S-Tag	Rabbit	Polyclonal	ELISA, WB, ICC	0.1 ml
NB600-520	S-Tag	Goat	Polyclonal	ELISA, WB, ICC	1 ml
NB600-521	S-Tag	Rabbit	Polyclonal	ELISA, WB, ICC	1 ml
NB110-40658	S-Tag, Agarose Immobilized	Goat	Polyclonal	IP	0.4 ml
NB600-509	S-Tag, FITC	Goat	Polyclonal	ICC, WB, ELISA	0.1 ml
NB600-510	S-Tag, HRP	Goat	Polyclonal	ELISA, WB, ICC	0.1 ml
NB600-512	S-Tag, HRP	Rabbit	Polyclonal	ELISA, WB, ICC	0.1 ml

T7 Antibodies

Catalog#	Product	Host	Type	Application	Size
NB600-370	T7	Chicken	Polyclonal	ELISA, WB, IHC, ICC	100 µl
NB600-371	T7	Goat	Polyclonal	ELISA, WB, IHC, ICC, IP	100 µl
NB600-372	T7	Rabbit	Polyclonal	ELISA, WB, IHC, ICC	100 µl
NB600-373	T7	Chicken	Polyclonal	ELISA, WB, IHC, ICC	1 ml
NB600-374	T7	Goat	Polyclonal	ELISA, WB, IHC, ICC	1 ml
NB600-375	T7	Rabbit	Polyclonal	ELISA, WB, IHC, ICC	1 ml
NB600-394	T7	Rabbit	Polyclonal	ELISA, WB, ICC	0.1 ml
NB500-554	T7 (F-tag-01)	Mouse	Monoclonal	IP, WB	0.1 mg
NB600-378	T7, Agarose Immobilized	Goat	Polyclonal	IP	0.1 mg
NB600-376	T7, FITC	Goat	Polyclonal	IHC, ICC	0.1 ml
NB600-377	T7, HRP	Goat	Polyclonal	ELISA, WB, IHC, ICC	0.1 ml

The T7 epitope tag is commonly engineered onto the N- or C- terminus of a protein of interest so that the tagged protein can be analyzed and visualized using immunochemical methods. The recognized T7 epitope represents the amino acid sequence MASMTGGQQM derived from the T7 major capsid protein of the T7 phage.

The V5 epitope tag is commonly engineered onto the N- or C- terminus of a protein of interest so that the tagged protein can be analyzed and visualized using immunochemical methods. The recognized V5 epitope represents amino acid residues 95 to 108, GKIPN-PLLGLDST, of RNA polymerase alpha subunit of simian virus 5.

V5 NB600-381



Detection of V5-tagged Nicastrin, using NB 600-381.

V5 Antibodies

Catalog#	Product	Host	Type	Application	Size
NB600-379	V5	Chicken	Polyclonal	ELISA, IHC, WB, ICC	100 µl
NB600-380	V5	Goat	Polyclonal	ELISA, WB, ICC	0.1 ml
NB600-381	V5	Rabbit	Polyclonal	ELISA, IP, WB, ICC	0.1 ml
NB600-382	V5	Chicken	Polyclonal	ELISA, WB, IHC, ICC	1 ml
NB600-383	V5	Goat	Polyclonal	ELISA, WB, IHC, ICC	1 ml
NB600-384	V5	Rabbit	Polyclonal	ELISA, WB, ICC	1 ml
NB100-62264	V5 (SV5-Pk1)	Mouse	Monoclonal	ELISA, IHC-Fr, IP, RIA	0.1 mg
NB100-64791	V5 (SV5-Pk1), Biotin	Mouse	Monoclonal	ELISA, IHC-Fr, WB	0.1 mg
NB600-387	V5, Agarose Immobilized	Goat	Polyclonal	IP	100 µg
NB600-385	V5, FITC	Goat	Polyclonal	ICC	0.1 ml
NB600-386	V5, HRP	Goat	Polyclonal	ELISA, WB, ICC	0.1 ml
NB600-395	V5, HRP	Rabbit	Polyclonal	ELISA, WB, ICC	0.1 ml

VSV-G Antibodies

Catalog#	Product	Host	Type	Application	Size
NB100-2485	VSV-G tag	Rabbit	Polyclonal	ELISA, WB	0.1 ml
NB100-63043	VSV-G tag	Rabbit	Polyclonal	ELISA, IF	0.05 mg
NB100-63044	VSV-G tag	Rabbit	Polyclonal	ELISA, IF	0.05 mg
NB100-2484	VSV-G tag	Goat	Polyclonal	ELISA, ICC, WB	0.1 ml
NB600-436	VSV-G tag, Agarose Immobilized	Goat	Polyclonal	IP	0.4 ml
NB100-2487	VSV-G tag, FITC	Goat	Polyclonal	ICC	0.1 ml
NB100-2486	VSV-G tag, HRP	Goat	Polyclonal	ELISA, ICC, WB	0.1 ml

The VSV-G epitope tag is commonly engineered onto the N- or C- terminus of a protein of interest so that the tagged protein can be analyzed and visualized using immunochemical methods. The recognized VSV-G epitope represents the amino acid sequence YTDIEMNRLGK derived from the Vesicular Stomatitis viral glycoprotein.

Antibody Grants

WANT YOUR ANTIBODY PRODUCED FOR FREE?

Visit our website, www.novusbio.com and fill out the Antibody Grant Sheet for a chance to receive 2 mgs of FREE antibody!

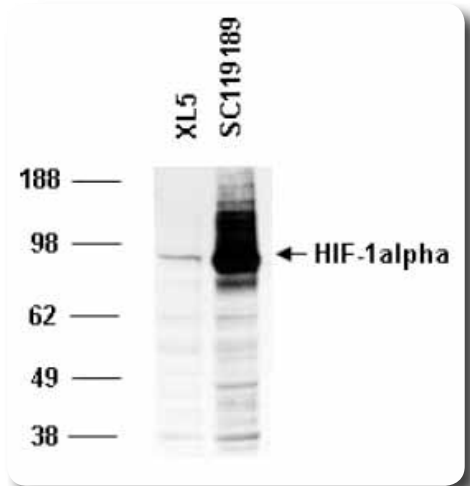
Grant Award Date: 1 Award selected on the 15th of every month. Awardees will receive a 0.2 mg test sample of affinity purified rabbit sera. (Typical antibody production takes 4-5 months). If the product works and you supply the necessary documentation, you will receive **2 mgs** of affinity purified antibody in exchange for product feedback. Novus reserves the right to sell the antibody produced by the grant. Submit by the end of the month to be selected in the following month's drawing by fax (below) or email (novus@novusbio.com).

Positive Controls: Tissues, Lysates, Peptides and Proteins

Total Proteins

Bovine	Human Multiple Sclerosis
Guinea Pig	Human Tumor (Various)
Human Normal	Human Fetal
Human Diabetic	Monkey
Human Heart Disease	Mouse
Human Liver Cirrhosis	Plant
Human Lupus	Porcine
Human Alzheimer	Rabbit
Human Neurological Disorders	Rat

HIF-1 alpha positive control
NB810-611009



Membrane Proteins

Human
Mouse
Rat

**Over 700 Membrane
and Total Protein
Control Tissues**

**Visit our website
for specifics.**

**Over 1,200
Control
Peptides**

**Over 3,000
Full Length
Recombinant
Proteins**

**Over 5,000
Partial
Recombinant
Proteins**

**Over 2,000
Overexpression
Lysates**

Western Blot and IHC Accessory Products

Adjuvants

A-001-100 Adjukine B: new generation of Adjuvants

PBS Tablets

NB900-62086 Phosphate Buffered Saline Tablets pH 7.4

Agarose

851-0024 Protein A - Agarose

Mounting Medium

NB900-66726 Aqueous mounting medium for fluorescent staining

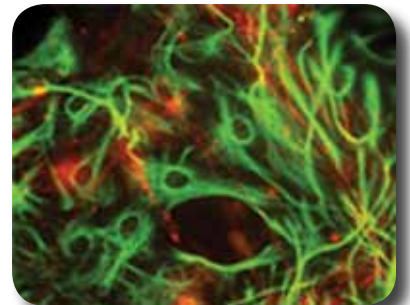
Wax Pens

NB900-66731 Elite PAP Pen
NB900-66732 Mini Elite PAP Pen

Antigen Retrieval

NB900-66733 High pH antigen retrieval buffer
NB900-66727 Proteinase K solution
NB900-66728 10x Citrate Buffer pH 7.0 for Heat Induced Epitope Recovery
NB900-66729 10x Citrate Buffer pH 8.0 for Heat Induced Epitope Recovery
NB900-66730 10x EDTA Buffer pH 8.0 for Heat Induced Epitope Recovery
NB900-66724 Pepsin solution for antigen retrieval
NB900-62075 10X Citrate Buffer pH 6.0 for Heat Induced Epitope Recovery
NB900-62085 10X Tris-EDTA Buffer for Heat Induced Epitope Recovery, pH 9.0

GFAP
NB300-141





IN THE NEWS

1. [Luciferase NB600-307] Love Z, Wang F, Dennis J, et al. Imaging of Mesenchymal Stem Cell Transplant by Bioluminescence and PET. *J Nucl Med.* 2007 December 1, 2007;48(12):2011-20.
2. [C-MYC NB600-302] Silvestri, L., et al. Furin mediated release of soluble hemojuvelin: a new link between hypoxia and iron homeostasis. *Blood*, Oct 2007;doi:10.1182/blood-2007-07-100677.
3. [GFP NB100-1771] Hauser J, Sveshnikova N, Wallenius A, Baradaran S, Saarikettu J, Grundstrom T. B-cell receptor activation inhibits AID expression through calmodulin inhibition of E-proteins. *PNAS.* January 29, 2008;105(4):1267-72.
4. [Histidine NB600-317] Suzuki, K., et al. Transforming Growth Factor Beta Signaling via Ras in Mesenchymal Cells Requires p21-Activated Kinase 2 for Extracellular Signal-Regulated Kinase-Dependent Transcriptional Responses. *Cancer Res.* 2007; 3673-3682.
5. [6-Histidine NB600-318] Rengarajan, J., et al. Mycobacterium tuberculosis Rv2224c modulates innate immune responses. *PNAS*, Jan 2008; 105: 264-269.
6. [C-MYC NB600-335] Espinosa JS, Luo L. Timing Neurogenesis and Differentiation: Insights from Quantitative Clonal Analyses of Cerebellar Granule Cells. *J Neurosci.* March 5, 2008;28(10):2301-12.
7. [C-MYC NB600-338] Muzumdar, M., et al. Modeling sporadic loss of heterozygosity in mice by using mosaic analysis with double markers (MADM). *PNAS* published online Mar 5, 2007; doi: 10.1073/pnas.0606491104.
8. [V5 NB600-381] Liu Y, Vidensky S, Ruggiero AM, Maier S, Sitte HH, Rothstein JD. Reticulon RTN2B Regulates Trafficking and Function of Neuronal Glutamate Transporter EAAC1. *J Biol Chem.* March 7, 2008;283(10):6561-71.
9. [Beta-Actin NB600-501] Dror V, Kalynyak TB, Bychkivska Y, et al. Glucose and Endoplasmic Reticulum Calcium Channels Regulate HIF-1 beta via Presenilin in Pancreatic beta cells. *J Biol Chem.* April 11, 2008;283(15):9909-16.
10. [GAPDH NB300-221] Zhang Q-S, Eaton L, Snyder ER, et al. Tempol Protects against Oxidative Damage and Delays Epithelial Tumor Onset in Fanconi Anemia Mice. *Cancer Res.* March 1, 2008;68(5):1601-8.
11. [Tubulin NB100-1639] Venkatesan, R.N. et al. Mutation at the Polymerase Active Site of Mouse DNA Polymerase delta Increases Genomic Instability and Accelerates Tumorigenesis. *Mol. Cell. Biol.* Nov 2007 27:7669-7682.
12. [Beta-Actin NB600-503] Zou, D., et al. Absence of Adenylyl Cyclase 3 Perturbs Peripheral Olfactory Projections in Mice. *J. Neurosci.*, Jun 2007; 27: 6675-6683.
13. [GAPDH NB300-285] George, J., et al. Restoration of Tissue Factor Pathway Inhibitor-2 in a Human Glioblastoma Cell Line Triggers Caspase-Mediated pathway and Apoptosis. *Clin. Cancer Res.* 2007 12: 3507-3517.
14. [GFP NB600-303] Fabbri M, Garzon R, Cimmino A, et al. MicroRNA-29 family reverts aberrant methylation in lung cancer by targeting DNA methyltransferases 3A and 3B. *PNAS.* 2007 October 2, 2007;104(40):15805-10.



ORDERING

U.S. ORDERING

Phone: 303.730.1950
888.506.6887

Fax: 303.730.1966

Email: orders@novusbio.com

Internet: www.novusbio.com

INTERNATIONAL ORDERING

Phone: +44 (0) 1223 426001

Fax: +44 (0) 871 971 1635

Email: europe@novusbio.com

Web: www.novusbio.com

TECHNICAL SUPPORT

Phone: 303.730.1950
888.506.6887

Email: technical@novusbio.com

Live Chat featured on our website, www.novusbio.com