



CATALOG OF ANTIBODIES FOR

APOPTOSIS


 **NOVUS**
BIOLOGICALS®
Today's Research. Tomorrow's Discovery.

Table of Contents

Mitochondrial Mediated Pathway..... **2**

Inhibitors of Apoptosis Family..... **5**

Death Receptor Signaling Pathway..... **8**

Caspases **12**

Apoptosis Inducing Factor **13**

p53 and Apoptosis..... **13**

Featured Apoptosis Antibodies... **17**

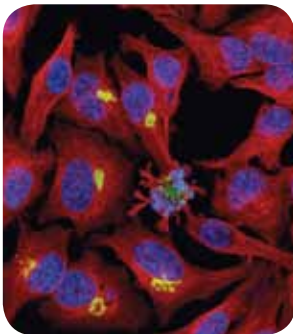
In The News **18**

Application Key

- ELISA** - Enzyme-linked Immunosorbent Assay
- FACS** - Fluorescent Activated Cell Sorting
- Func** - Functional Assay
- ICC** - Immunocytochemistry
- IF** - Immunofluorescence
- IHC** - Immunohistochemistry
- IHC-Fr** - Immunohistochemistry Frozen
- IHC-P** - Immunohistochemistry Paraffin
- IP** - Immunoprecipitation
- Pep-ELISA** - Peptide ELISA
- RIA** - Radioimmunoassay
- WB** - Western Blot

Reactivity Key

- | | |
|------------------------|---------------------|
| Bv - Bovine | Ha - Hamster |
| Ca - Canine | Hu - Human |
| Ce - C. elegans | Mk - Monkey |
| Dr - Drosophila | Mu - Mouse |
| Eq - Equine | Rt - Rat |
| Fe - Feline | Sh - Sheep |



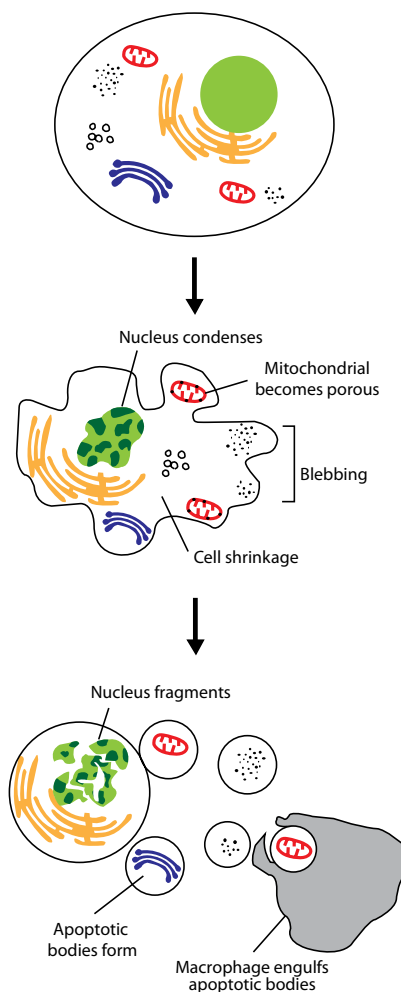
Cover Image: Cultured HeLa cells labeled for tubulin (red) and counter-stained with DAPI (blue) with some cells expressing Golgi-targeted GFP. The center cells have undergone apoptosis.

Apoptosis

Apoptosis, also known as programmed cell death, is a normal process of organismal development. Induction of this process can arise from a variety of stimuli. The extrinsic pathway, often referred to as the Death Receptor Signaling Pathway, is activated via the binding of death activator proteins to the cell surface. The intrinsic pathway, also referred to as Mitochondrial Mediated Apoptosis, is launched via intracellular signals, such as DNA damage, growth factor deprivation and oxidative stress. Despite variance in the types of stimuli that induce apoptosis, both of these mechanisms turn on caspases which act to digest cells from within.

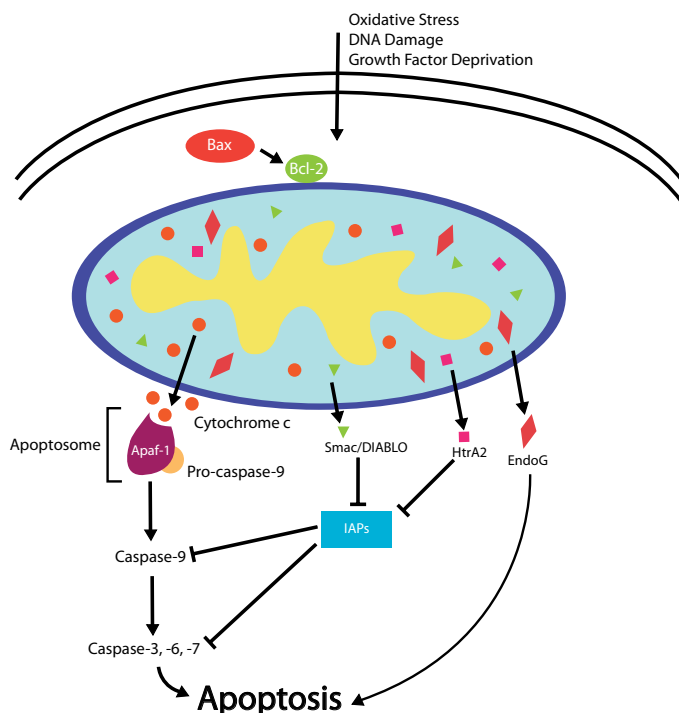
Cells display distinct morphology during programmed cell death. Following the cleavage of lamins and actin filaments in the cytoskeleton, cell shrinkage occurs and nuclear condensation results from the breakdown of chromatin. In order to promote phagocytosis by macrophages, the plasma membrane undergoes changes to trigger the macrophage response; the primary change is the translocation of phosphatidylserine to the cell surface. Lastly, membrane blebbing occurs and apoptotic bodies form.

Apoptosis differs from necrosis because it is a normal and regulated process. Necrosis is an uncontrolled process of traumatic cell death caused by acute injury, which can lead to cellular lysis, inflammation and serious health problems. Despite its controlled nature, excessive apoptosis may cause hypotrophy, whereas insufficient apoptosis may lead to cancer. Research has shown that some oncogenic mutations disrupt the apoptotic process, thus leading to tumor initiation, progression or metastasis.



Mitochondrial Mediated Pathway

Mitochondrial mediated apoptosis, often referred to as the intrinsic pathway, functions in response to intracellular stresses, such as DNA damage, growth factor deprivation, oxidative stress and ischaemia. Under normal conditions, the mitochondrial outer membrane displays Bcl-2, an anti-apoptotic molecule that inhibits apoptosis. When internal damage to the cell occurs, Bax, a pro-apoptotic molecule, migrates to the mitochondrial surface where it inhibits Bcl-2's protective effect. This interaction causes permeabilization of the outer membrane, resulting in the release of mitochondrial proteins, including cytochrome c, AIF, endonuclease G, Smac/DIABLO and HtrA2. Upon release, cytochrome c binds Apaf-1 and pro-caspase-9 to form a caspase-activating complex called the apoptosome. This complex then binds and activates caspase-9, which in turn activates other caspases ultimately leading to apoptosis. Upon release into the cytosol, AIF and endonuclease G contribute to DNA fragmentation and chromosomal condensation, whereas Smac/DIABLO and HtrA2 bind IAPs, thus preventing their caspase-inhibitory activity and leading to apoptosis.



Bcl-2

The Bcl-2 family of apoptosis-related genes plays a central role in regulating apoptotic pathways. Bcl-2 suppresses apoptosis by controlling mitochondrial membrane permeability and inhibiting caspase activity. Bcl-2 hinders caspase activity by preventing cytochrome c release from the mitochondria and/or via binding Apaf-1 in the cytosol. It can form homodimers and heterodimers with Bax, Bad, Bak and BclX(L). Furthermore, constitutive expression of Bcl-2 is thought

to be the cause of follicular lymphoma. Phosphorylation/dephosphorylation on Ser-70 regulates Bcl-2's anti-apoptotic activity. Growth factor-stimulated phosphorylation on Ser-70 by protein kinase C (PKC) is required for anti-apoptotic activity. In the absence of growth factors, Bcl-2 appears to be phosphorylated by other protein kinases, such as ERKs and stress-activated kinases.

Bcl-2 (E17) Antibody NB110-55551



Immuno-histochemical analysis of human breast carcinoma using NB110-55551.

Species: Hu, Mu
Applications: FACS, ICC, IHC, IP, WB

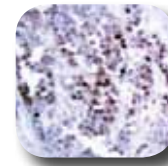
Bcl-2 (BCL/10C4) Antibody NB100-78543



Western blot analysis of mouse splenocytes using NB100-78543.

Species: Mu, Rt
Applications: FACS, IF, IP, WB, ICC

Bcl-2 [Ser70] Antibody NB100-92482



Immuno-histochemical analysis of human breast carcinoma tissue using NB100-92482.

Species: Hu, Rt
Applications: ELISA, IHC-P, IP

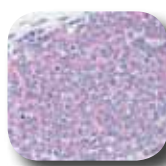
Bcl-2 (8C8) Antibody NB200-572



Immuno-histochemical analysis of human tonsil using NB200-572.

Species: Hu, Mk
Applications: IHC-P, WB

Bcl-2 [Thr56] Antibody NB1-02865



Immuno-histochemical analysis of human spleen using NB1-02865.

Species: Hu
Applications: WB, IHC-P

Bcl-2 Antibody NB300-900



Western blot analysis of human lymph node lysate using NB300-900.

Species: Hu,
Applications: PEP-ELISA, WB

Bax

Bax is a pro-apoptotic member of the Bcl-2 family of proteins. In the mitochondrial mediated apoptosis pathway, Bax promotes cell death by binding Bcl-2 and inhibiting its anti-apoptotic function. Upon stimulation, Bax translocates to the mitochondrial

membrane. Through interactions with mitochondrial membrane proteins, Bax increases the membrane's permeability, leading to the release of cytochrome c and initiation of the apoptotic caspase cascade.

Bax (E63) Antibody NB110-55492



Immunohistochemical analysis of human lymph node using NB110-55492.

Species: Hu, Mu, Rt
Applications: IHC, IP, WB

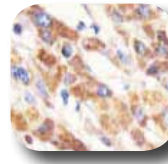
Bax Antibody NB100-78443



Western blot analysis of HeLa cell lysate using NB100-78443.

Species: Hu, Mu, Rt
Applications: IHC, IP, WB

Bax Antibody NBP1-19710



Immunocytochemical analysis of human liver carcinoma tissue using NBP1-19710.

Species: Hu, Mu, Rt
Applications: IF, IHC-P, WB

Bax (2D2) Antibody NB100-78544



Western blot analysis of extracts from HeLa cells (lane 1) and human PBMCs (lane 2) using NB100-78544.

Species: Hu
Applications: FACS, ICC, IHC, IP, WB

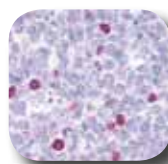
Bax Antibody NB120-7977



Western blot analysis of Bax in HeLa whole cell extract using NB120-7977.

Species: Hu, Mu, Rt
Applications: IHC-P, IHC, IP, WB

Bax Antibody NBP1-02615



Immunohistochemical analysis of human tonsil using NBP1-02615.

Species: Hu
Applications: ICC, IHC-P, WB

Cytochrome c

Cytochrome c is an electron carrier protein found in the mitochondrial intermembrane space. Activation of pro-apoptotic Bcl-2 family members or suppression of anti-apoptotic proteins causes the outer mitochondrial

membrane to become permeable, thus resulting in the release of cytochrome c into the cytosol. Upon release, cytochrome c binds Apaf-1, which activates caspase-9, ultimately leading to apoptosis.

Cytochrome C (7H8.2C12) Antibody NB100-56503



Western blot analysis of HeLa cell lysate using NB100-56503.

Species: Dr, Eq, Hu, Mu, Rt
Applications: IF, WB, ICC

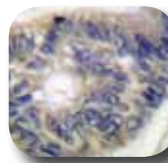
Cytochrome C Antibody NB300-1068



Immunohistochemical analysis of human heart tissue using NB300-1068.

Species: Hu
Applications: ELISA, WB, IHC-P

Cytochrome C Antibody NB100-91732



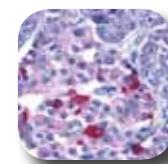
Immunohistochemical analysis of human colon carcinoma tissue using NB100-91732.

Species: Hu, Mu, Rt
Applications: ELISA, IF, IHC-P, WB

Endonuclease G

Endonuclease G (EndoG) is a mitochondrion-specific nuclease that translocates to the nucleus and cleaves chromatin into nucleosomal fragments during apoptosis. EndoG achieves this cleavage independently of caspases and is capable of cleaving DNA at double-stranded and single-stranded sites. The homologue of mammalian EndoG was the first mitochondrial protein identified to be involved in apoptosis in *C. elegans*.

EndoG Antibody NB600-774



Immunohistochemical analysis of human pancreas using NB600-774.

Species: Hu, Mu, Rt
Applications: WB, IHC-P

Abnova, Acris, biosensis, Innova, SDIX

Novus distributes for these companies:



Innova Biosciences

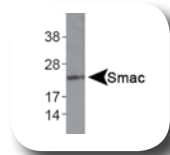


Smac/DIABLO

Smac/DIABLO is a mitochondrial protein that activates various forms of apoptosis. This activation may be due to the neutralization of one or more members of the IAP family. Smac/DIABLO exits the mitochondria and enters the cytosol during certain apoptosis-triggered events.

The release of these proteins occurs via different mechanisms. Mitochondrial mediated apoptosis is important in animal development and tissue homeostasis, with alterations resulting in a range of malignant disorders.

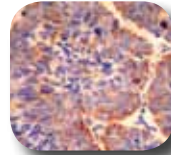
Smac (78-1-118) Antibody NB500-213



Western blot analysis of Smac on HeLa whole cell extract lysates using NB500-213.

Species: Hu, Mu, Rt
Applications: IP, WB

Smac (E12) Antibody NB110-56936



Immunohistochemical analysis of human skin cancer tissue using NB110-56936.

Species: Hu, Rt
Applications: FACS, IHC, IP, WB, ICC

Smac Antibody NBP1-47092



Immunohistochemical analysis of human ovary tissue using NBP1-47092.

Species: Hu
Applications: IHC, WB

Smac Antibody NB100-56311



Western blot analysis of HeLa cell lysate using NB100-56311.

Species: Hu
Applications: WB

Smac Antibody H00056616-B01



Western blot analysis of human kidney using H00056616-B01.

Species: Hu
Applications: ELISA, WB

Smac Antibody NB300-1045



Western blot analysis of mouse heart tissue lysate in the absence (1) or presence (2) of blocking peptide and in rat heart tissue lysate (3) using NB300-1045.

Species: Hu, Mu, Rt
Applications: WB

[NB500-213 Smac] Wang X, Zhu S, Pei Z, et al. Inhibitors of Cytochrome c Release with Therapeutic Potential for Huntington's Disease. *J Neurosci* 2008;28(38):9473-9485.

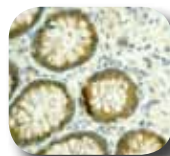
FEATURED
PRODUCT

HtrA2

HtrA2, also referred to as Omi, is a serine protease that plays a significant role in apoptosis. Localized to the intermembrane space of the mitochondria, HtrA2 exists predominantly as two isoforms. In response to cellular

stress signals, HtrA2 is released into the cytosol. One way that HtrA2 induces apoptosis is by binding to IAPs and thereby preventing their caspase-inhibitory activity.

HtrA2 (EPR22) Antibody NBP1-40603



Immunohistochemical analysis of human colon using NBP1-40603.

Species: Hu, Mu, Rt
Applications: FACS, ICC, IHC, IP, WB

HtrA2 (E55) Antibody NB110-57068



Immunohistochemical analysis of human lung adenocarcinoma using NB110-57068.

Species: Hu, Mu, Rt
Applications: IHC, IP, WB

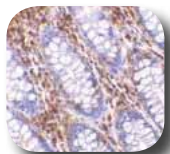
HtrA2 (196C429) Antibody NB100-56558



Immunohistochemical analysis of human stomach tumor tissue using NB100-56558.

Species: Hu
Applications: IHC, WB

HtrA2 Antibody NB120-21307



Immunohistochemical analysis of human colon tissue using NB120-21307.

Species: Hu
Applications: IHC, WB

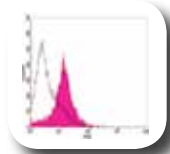
HtrA2 Antibody NBP1-02703



Immunohistochemical analysis of human kidney using NBP1-02703.

Species: Hu
Applications: WB, IHC-P

HtrA2 Antibody NBP1-49252



Flow cytometric analysis of Ramos cells using NBP1-49252.

Species: Hu, Mu, Rt
Applications: FACS, WB

APAF1

Apoptosis protease-activating factor 1 (APAF1) is ubiquitously expressed in human tissue. It binds cytochrome c and pro-caspase-9 to form apoptosomes, which leads to activation of caspase-9. Activated

caspase-9 in turn cleaves and activates caspase-3, one of the key proteases responsible for the proteolytic cleavage of many apoptotic proteins. Apaf-1 can also associate with caspase-4 and caspase-8.

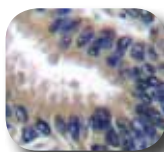
APAF1 Antibody NB100-94207



Western blot analysis of human heart tissue lysate using NB100-94207 in the absence (lane A) or presence (lane B) of blocking peptide.

Species: Hu, Mu, Rt
Applications: WB

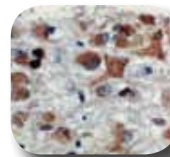
APAF1 Antibody NB100-91661



Immunohistochemical analysis of human lung carcinoma tissue using NB100-91661.

Species: Hu
Applications: ELISA, IF, IHC-P, WB

APAF1 Antibody NB100-56074



Immunohistochemical analysis of human brain tumors using NB100-56074.

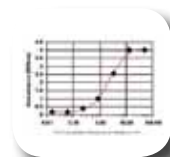
Species: Hu, Mu, Rt
Applications: IHC-P, IHC, IP, WB

Inhibitors of Apoptosis Family

The Inhibitors of Apoptosis (IAPs) are a family of proteins that suppress cell death. Although several IAP relatives have been identified to date, Survivin is the most commonly studied. IAP proteins are characterized by a novel domain of approximately 70

amino acids termed the baculoviral IAP repeat (BIR). Although membership into the IAP family of proteins requires the presence of a BIR domain and the ability to suppress apoptosis, some proteins also have RING and/or CARD domain.

NAIP Antibody 32200002



ELISA analysis of recombinant protein using 32200002.

Species: Hu
Applications: ELISA

NAIP Antibody NB100-94288



Western blot analysis of PC-3 cell lysate using NB100-94288.

Species: Hu
Applications: WB

NAIP

Neuronal apoptosis inhibitor protein (NAIP) was the first human IAP protein identified. Unlike other IAPs, NAIP requires ATP to bind caspase-9 and is not inhibited by the IAP-inhibiting molecule Smac/DIABLO, suggesting that NAIP is unique among the IAPs in its regulatory activity.

cIAP

The two isoforms of cIAP (cIAP1 and cIAP2) are apoptotic suppressors that are structurally related to XIAP. cIAP1 and cIAP2 contain three BIR motifs that are essential and sufficient for the binding and inhibition of caspase-3 and caspase-7. The cIAPs can associate with the death receptor TNF-R2, and mediate the ubiquitination of TRAF2 following the binding of TNF-alpha by its receptor. HtrA2 is a negative regulator of cIAP that inhibits its activity by catalytically cleaving cIAP. Another negative regulator, Smac/DIABLO, acts by enhancing the auto-ubiquitization activity of cIAP.

cIAP1 Antibody NBP1-02991



Species: Hu, Mu
Applications: WB, IHC-P

Immunohistochemical analysis of human prostate using NBP1-02991.

cIAP2 (E40) Antibody NB110-57030



Species: Hu, Rt
Applications: IHC, IP, WB, ICC

Immunohistochemical analysis of human normal spleen using NB110-57030.

Survivin

Survivin encodes a structurally unique IAP. Survivin expression is high in fetal development and decreases markedly in non-neoplastic adult tissues. Survivin is abundantly re-expressed in transformed cells and in all of the most common cancers of lung, colon, pancreas, breast and prostate *in vivo*. Survivin appears to be situated at the crossroads of cell death and cell division, governing a checkpoint involved in cytokinesis, while

also suppressing apoptosis. Survivin is also expressed in brain tissues (astrocytes and some neurons) of adult rats following traumatic brain injury. Survivin has been found co-expressed with NeuN (mature neuronal marker) and PCNA (a cell cycle protein). Survivin may affect regulation of neural cell proliferative responses after brain injury.

Survivin Antibody NB500-201

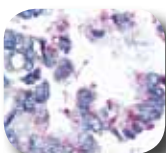


Telophase with accumulation of survivin in the midbodies of two daughter cells. Survivin detection using NB500-201.

Species: Ca, Hu, Mu, Rt, Fe

Applications: ChIP, IF, IP, WB, ICC, IHC-P

Survivin (32.1) Antibody NB500-237



Immunohistochemical analysis of human lung cancer using NB500-237.

Species: Hu

Applications: IHC, IF, WB, IHC-P

Survivin (60.11) Antibody NB500-238



Western blot analysis of HeLa whole cell lysate using NB500-238.

Species: Hu, Mu, Rt

Applications: IHC, WB, ICC, IHC-P

Survivin (60.11) Antibody NB500-205



Western blot analysis of rat aorta smooth muscle cell lysate using NB500-205.

Species: Hu, Mu, Rt

Applications: FACS, ICC, IF, IP, WB

Survivin [Thr34] Antibody NB500-236



Western blot analysis of phosphorylated Survivin protein (lane 1) and non-phosphorylated Survivin protein (lane 2) using NB500-236.

Species: Bv, Ca, Fe,
Hu, Mk, Mu, Po

Applications: ICC, IF, WB

Survivin Antibody SuperNovus Pack NB100-911

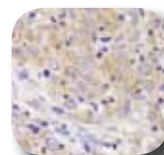
Includes:

NB500-201, NB500-237
and NB500-238

BIRC6

BIRC6, also referred to as Apollon, is a member of the IAP family. Research suggests that BIRC6 inhibits apoptosis by interfering with the activation of ICE-like proteases. BIRC6, which contains a single BIR domain and an ubiquitin-conjugating enzyme domain, is expressed in multiple cancer cell lines. Brain cancer cell lines that overexpress BIRC6 demonstrate multi-drug resistance, implying that BIRC6 may protect cancer cells from undergoing apoptosis and may participate in tumorigenesis and drug resistance.

BIRC6 Antibody NB110-40730



Immunohistochemical analysis of human metastatic lymph node using NB110-40730.

Species: Hu

Applications: IHC-P

BIRC8

BIRC8, also referred to as ILP-2, potentially inhibits apoptosis induced by overexpression of Bax or by co-expression of caspase-9 with Apaf-1. A processed form of caspase-9 can be co-precipitated from cells,

with BIRC8, suggesting a physical interaction between BIRC8 and caspase-9. Thus, BIRC8 is a novel IAP family member with restricted specificity for caspase-9.

BIRC8 Antibody H00112401-B01P



Western blot analysis of transfected 293T cell (lane 1) and non-transfected lysate (lane 2) using H00112401-B01P.

Species: Hu

Applications: ELISA, WB

BIRC8 Antibody NBP1-03071



Immunohistochemical analysis of human small intestine, Peyer's patch using NBP1-03071.

Species: Hu, Mu, Rt

Applications: WB, ICC, IHC-P

BIRC8 Antibody H00112401-B01



Western Blot analysis of 293T cell line using transfected (lane 1) and non-transfected lysate (lane 2) using H00112401-B01.

Species: Hu

Applications: ELISA, WB

Livin

Livin is a novel member of the IAP family. It has two isoforms (Livin alpha and Livin beta) that have varying functions and tissue distributions. Livin alpha protects cells from apoptosis induced by staurosporine, whereas Livin beta protects cells from apoptosis induced by etoposide. The protein encoded by this gene contains a

single copy of a BIR, as well as a RING-type zinc finger domain. The BIR domain is essential for inhibitory activity and interacts with caspases, while the RING finger domain sometimes enhances anti-apoptotic activity but cannot inhibit apoptosis alone.

Livin Antibody NB300-941



Western blot analysis of MOLT4 lysate using NB300-941.

Species: Hu
Applications: PEP-ELISA, WB

Livin Antibody NB100-56145



Immunohistochemical analysis of human tonsil using NB100-56145.

Species: Hu, Mu, Rt
Applications: IP, WB, IHC-P

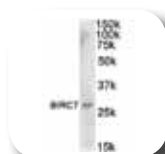
Livin (88C570) Antibody NB100-56548



Western blot analysis of Livin transfected cell lysate (lane 1) and U266 cell lysate (lane 2) using NB100-56548.

Species: Hu
Applications: IF, WB, ICC

Livin Antibody NB100-66229



Western blot analysis of Jurkat cell lysate using NB100-66229.

Species: Hu
Applications: ELISA, WB

Livin Antibody NB120-5393



Immunohistochemical analysis of human small intestine tissue using NB120-5393.

Species: Hu
Applications: IHC, WB

Livin Antibody NBP1-02733



Immunohistochemical analysis of human brain cerebellum using NBP1-02733.

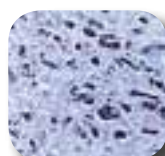
Species: Hu
Applications: WB, IHC-P

XIAP

The X-linked inhibitor of apoptosis protein (XIAP) is a member of the IAP family. XIAP functions by directly binding caspase-3, caspase-7 and caspase-9, thus

causing their inhibition and blockage of the apoptosis signaling pathway. XIAP is specifically cleaved by caspase-3 during apoptosis, and partially loses its function.

XIAP Antibody NB100-56183



Immunohistochemical analysis of human breast carcinoma using NB100-56183.

Species: Hu, Mu, Rt
Applications: IHC, IP, WB, IHC-P

XIAP (G81) Antibody NB100-92709



Immunohistochemical analysis of human skeletal muscle tissue using NB100-92709.

Species: Hu, Mu, Rt
Applications: ELISA, IHC-P, WB

XIAP Antibody NB600-872



Western blot analysis of XIAP expression in Jurkat cell lysate using NB600-872.

Species: Hu, Mu, Rt
Applications: ICC, IF, IHC, IP, WB

Novus Guarantee + Innovator's Reward™ Policy



Novus' Quality Guarantee

We stand behind our products 100%. If you cannot get a product to work in an application or species stated on our datasheet, our technical service team will troubleshoot with you to get it to work. If a product still does not work after troubleshooting, you can receive a free of charge replacement product or a full refund. Novus' Quality Guarantee covers 100% of the products we carry, including those that we distribute for Abnova. No hassles, no nonsense. It is that simple!

+ Innovator's Reward™

Our Innovator's Reward™ program is designed to support your innovative research with minimal financial risk to you. Should you decide to use one of our products in an application or species for which it has not been tested, Novus will provide you a 50% refund on the purchased product as well as a 50% discount on a future product of equal or lesser value. Simply email innovators@novusbio.com to apply for your award. We will send you a form for you to submit a summary of your research and report your experimental results, after which your award will be given. Your innovation can help us to accelerate bioscience research. After all, we're making your success our goal.

= 100% Support and Peace of Mind

Death Receptor Signaling Pathway

Apoptosis in cells can be affected by external signals which come mainly from activated macrophages. The extrinsic signals are recognized by TNF superfamily proteins, including TNFR-1 and TNFR-2, and Fas-Ligand (CD95) receptors. These receptors conduct the

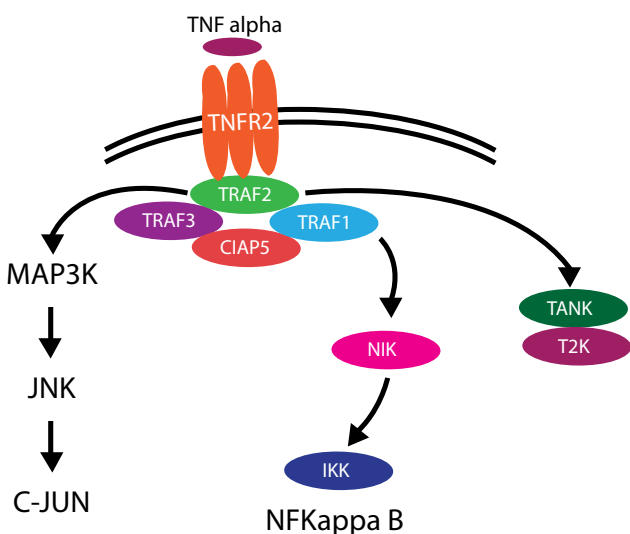
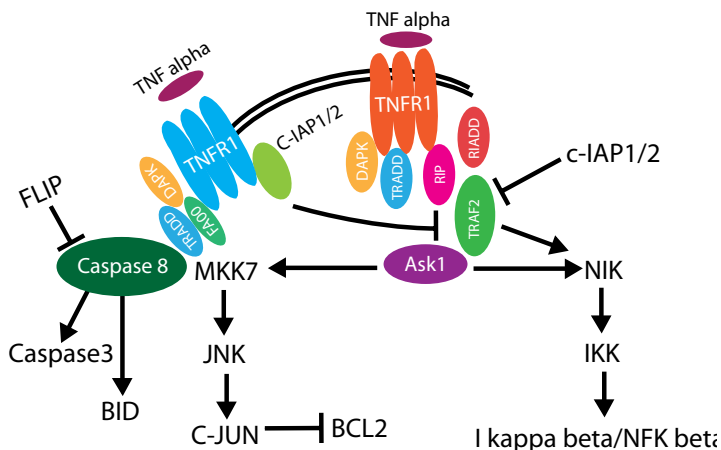
external signal to the interior of the cell thus affecting either gene transcription or the intrinsic apoptotic pathway. Activation of death receptors recruits other effector proteins that contain death domains.

TNF-R1

The TNF-R1 protein is the main regulator of programmed cell death. This receptor can activate numerous pathways either causing inhibition of Bcl-2, which allows for induction of mitochondrial mediated apoptosis, or activating the NFkappaB pathway, which promotes cell survival.

TNF-R1 Antibodies:

NB600-627, NB110-85469, and NB100-92110



TNF-R2

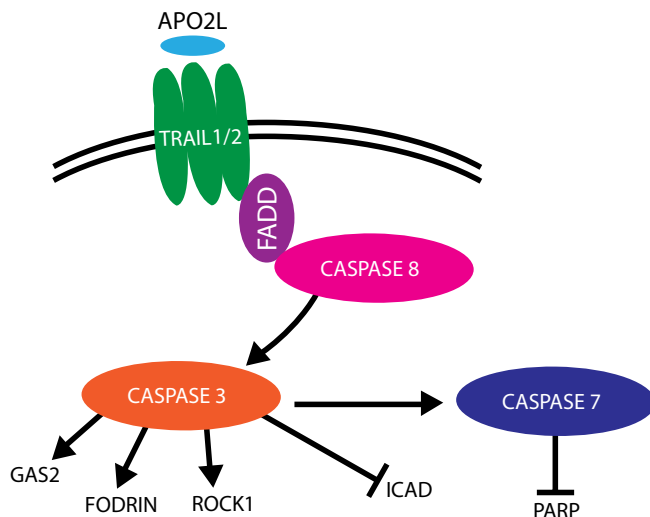
The TNF-R2 protein does not appear to play a direct role in apoptosis. However, it may aid in responding to endogenously produced TNF, thus modulating TNF-R1 signaling. TNF-R2 may also enhance apoptosis by selectively depleting TRAF2 and IAP proteins.

TNF-R2 Antibodies:

NB110-85470, NB100-65024, H00007133-D01P

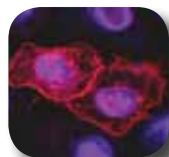
TRAIL Receptors

TRAIL receptors can induce both apoptosis and the NFkappaB pathway. TRAIL-R1 and TRAIL-R2 both contain a death domain, while TRAIL-R3/DCR1 and TRAIL-R4/DCR2 do not contain a death domain and serve to inhibit the signaling of TRAIL-R1 and TRAIL-R2. This pathway is of particular interest because the receptors can be targeted by monoclonal antibodies and TRAIL ligands which is enough to induce apoptosis in tumor cells; normal cells seem to be resistant to the induction.



TRAIL-R1

TRAIL-R1 (DR-4-02) Antibody [FITC] NB110-81756



Immunofluorescent staining of HeLa human cervix carcinoma cell line transfected with TRAIL-R1 expression plasmid using NB110-81756.

Species: Hu
Applications: FACS, IP, IF, ICC, Func

TRAIL-R1 Antibody NBP1-02775



Immunohistochemical analysis of human kidney using NBP1-02775.

Species: Hu
Applications: IHC-P, WB

TRAIL-R1 (32A1380) Antibody NB100-56747

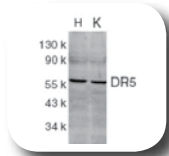


Western blot analysis of total cell lysate from Daudi cells using NB100-56747.

Species: Hu
Applications: FACS, WB

TRAIL-R2

TRAIL-R2 Antibody NB600-1091



Western blot analysis of HeLa (H) and K562 (K) whole cell lysates using NB600-1091.

Species: Hu, Mu
Applications: IHC-P, WB

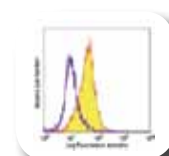
TRAIL-R2 Antibody NBP1-39980



Immunohistochemical analysis of human breast tissue using NBP1-39980.

Species: Hu
Applications: FACS, ICC, IHC-P, WB

TRAIL-R2 (DJR2-4) Antibody [Biotin] NB100-77854



Flow cytometric analysis of human peripheral blood granulocytes stained with biotinylated DJR2-4 using NB100-77854.

Species: Hu
Applications: FACS

TRAIL-R2 Antibody 26470002



ELISA analysis of recombinant protein using 26470002.

Species: Hu
Applications: ELISA

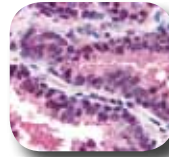
TRAIL-R2 Antibody NBP1-28249



Western blot analysis of DR5 in Jurkat cell lysate using NBP1-28249.

Species: Hu
Applications: FACS, WB

TRAIL-R2 Antibody NBP1-02960

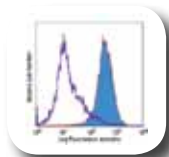


Immunohistochemical analysis of human prostate using NBP1-02960.

Species: Hu, Mu
Applications: WB, ICC, IHC-P

TRAIL-R3

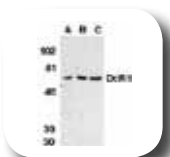
TRAIL-R3 (DJR3) Antibody NB100-77842



Flow cytometric analysis of human peripheral blood granulocytes stained with purified DJR3 using NB100-77842.

Species: Hu
Applications: FACS

TRAIL-R3 Antibody NBP1-28581



Western blot analysis of DcR1 in HeLa cell (A), mouse (B) and rat (C) liver tissue lysates using NBP1-28581.

Species: Hu, Mu, Rt
Applications: ELISA, IF, WB

TRAIL-R3 Antibody NB100-56445



Western blot analysis of mouse spleen cell lysate using NB100-56445.

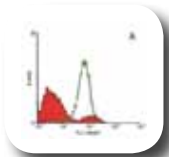
Species: Mu
Applications: WB

CD95 Receptor

The CD95 death receptor belongs to the TNF superfamily resulting in a different mechanism than the TNF receptors. Upon binding its corresponding Fas ligand, the CD95 receptor complexes into the death

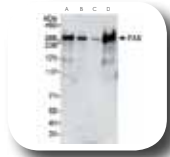
inducing signaling complex, which serves to attract FADD and other proteins that affect apoptotic pathways within the cell.

Fas (UT-1) Antibody NB120-11881



Species: Hu
Applications: FACS

FAS Antibody NB100-61046



Species: Hu
Applications: IP, WB

FAS Antibody NB100-87029



Species: Hu, Mu
Applications: IHC-P, IF

CD95/FasR Disease Implications

Mutations in the CD95 system cause many autoimmune disorders. Activation induced cell death plays an important role in the immune response, and it is also important for auto-reactive cells. CD95 has also been

implicated in the control of viral progression, such as HIV1 and Hepatitis B. These diseases induce massive apoptosis through the CD95 pathway.

Death Receptor Associating Proteins

A commonality among the death receptor associating proteins is that they each contain a highly conserved set of 80 amino acids, which are known collectively as the death domain. This portion of the protein is capable of

affiliating with the corresponding domain of the death receptors. Upon binding the receptor, other proteins are recruited, which are capable of triggering the apoptotic pathways.

DAPK

DAPK is a calmodulin-regulated serine/threonine kinase, with eight ankyrin repeats and two putative P-loop consensus sites. When TNF is bound by TNF-R1, DAPK associates with the activated receptor. Maximal

activation of JNK in response to TNF requires DAPK. Cell death mediated by this protein is characterized by the formation of autophagic vesicles and membrane blebbing.

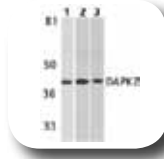
DAP Kinase 2 (EP1633Y) Antibody NB110-56926



Immunohistochemical analysis of human liver carcinoma using NB110-56926.

Species: Hu, Mu, Rt
Applications: FACS, IHC, WB

DAP Kinase 2 Antibody NB300-1022



Western blot analysis of AY31 whole cell lysate (lane 1), mouse spleen (lane 2), and rat kidney lysate (lane 3) using NB300-1022.

Species: Hu, Mu, Rt
Applications: WB

DAP Kinase 2 (3D4) Antibody H00023604-M01



Western blot analysis of DAPK2 expression in A-431 using H00023604-M01.

Species: Hu
Applications: ELISA, WB

FADD

FADD is an adaptor molecule which is implicated in apoptosis. It recruits both caspase-8 and -10 upon activation of either the CD95 receptor or TNF-R1. This group of proteins is called the DISC complex, which triggers apoptotic pathways.

FADD (EP887Y) Antibody NB110-56985



Immunohistochemical analysis of human lung using NB110-56985.

Species: Hu, Mu
Applications: IHC, WB

FADD Antibody NB100-92032



Immunohistochemistry analysis of human lung carcinoma tissue using NB100-92032.

Species: Hu, Mu
Applications: ELISA, IHC-P, WB

DAXX

DAXX is a nuclear protein that binds the activated CD95 receptor and, upon subsequent activation, induces the JNK pathway via ASK1. This protein seems to have

different actions depending on the stage of development. In embryos, DAXX seems to regulate apoptosis, thus preventing massive cell death.

DAXX Antibody NB100-61592



Western blot analysis of HeLa whole cell lysate using NB100-61592.

Species: Hu
Applications: WB

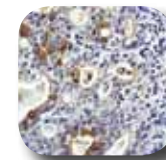
DAXX (DAXX-01) Antibody NB500-491



Immunofluorescence staining of transfected HeLa human cervix carcinoma cell line using NB500-491.

Species: Hu
Applications: WB, ICC, IF

DAXX (E94) Antibody NB110-56930



Immunohistochemical analysis of human stomach adenocarcinoma using NB110-56930.

Species: Hu
Applications: FACS, IHC, WB, ICC

**RIPK1 Antibody
H00008737-A01**



Western blot detection against immunogen using H00008737-A01.

Species: Hu
Applications: ELISA, WB

**RIPK1 Antibody
NBP1-33026**



Western blot analysis of RIPK1 on Molt-4 lysates using NBP1-33026.

Species: Hu
Applications: WB

RIPK1

RIPK1 can associate with either CD95R or TNFR and is necessary for activation of NFKappaB. It is specifically recruited by TRADD. Proteolytic cleavage of RIPK1 by caspase-8 during TNF induced apoptosis inhibits the NFKappaB pathway causing pro-apoptotic signaling activation.

RAIDD

RAIDD serves multiple purposes in the death receptor signaling pathway. The carboxy terminus contains sequence homology with the death domain of RIPK1, which allows them to interact. The

amino-terminus however can interact with both ICH-1 and CED3 providing a direct link to the death protease pathway.

**RAIDD (EPR1640Y) Antibody
NB110-57451**



Immunohistochemical analysis of human heart muscle using NB110-57451.

Species: Hu
Applications: FACS, IHC, IP, WB, ICC

**RAIDD (1F8) Antibody
H00008738-M01**



Immunofluorescent analysis of HeLa cells using H00008738-M01.

Species: Hu
Applications: ELISA, IF, WB

**RAIDD Antibody
NBP1-02638**



Immunohistochemical analysis of human liver using NBP1-02638.

Species: Hu
Applications: WB, ICC, IHC-P

TRAF2

TNF receptor associated factors mediate death receptor signal transduction. This protein associates with

TNFRs in a heterodimeric complex with TRAF1. TRAF2 is required for activation of MAP8/JNK and NFKappaB.

**TRAF2 Antibody
NB100-58959**



Western blot analysis of human ovary lysate using NB100-58959.

Species: Ca, Hu, Mu, Rt
Applications: ELISA, WB

**TRAF2 Antibody
NBP1-42777**



Western blot analysis TRAF2 in whole HeLa cell lysates using NBP1-42777.

Species: Hu, Mu
Applications: ELISA, IF, WB

**TRAF2 Antibody
H00007186-A01**



Western blot analysis of TRAF2 expression in HeLa using H00007186-A01.

Species: Hu
Applications: ELISA, WB

ASK1

ASK1 is part of the MAPK signaling cascade. Activation of this protein requires the removal of the inhibitory thioredoxin. Upon oxidation, thioredoxin dissociates

and ASK1 auto-phosphorylates and becomes an active kinase, thus allowing it to affect the JNK pathway.

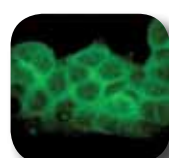
**ASK1 (EP553Y) Antibody
NB110-55482**



Immunofluorescent staining of HeLa cells using NB110-55482.

Species: Hu, Mu
Applications: FACS, IHC, WB, ICC

**ASK1 (4B8) Antibody
H00004217-M05**



Immunofluorescent analysis of MAP3K5 on A-431 cell using H00004217-M05.

Species: Hu
Applications: ELISA, IF, WB

**ASK1 [Ser966] Antibody
NBP1-19963**



Immunohistochemical analysis of human breast carcinoma tissue using NBP1-19963.

Species: Hu, Mu, Rt
Applications: IF, IHC, WB

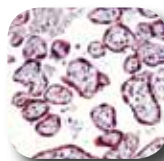
Caspases

Caspases are a family of proteins that play a critical role in apoptosis. They belong to a group of enzymes known as cysteine proteases and exist within the cell as inactive pro-caspases. This family can be divided into three classes: initiator caspases, effector caspases and cytokine processors. Initiator caspases (caspase-2, -8, -9, -10) are the first to be activated, which then cleave and activate the effector caspases (caspase-3, -6, -7). Effector caspases cleave, degrade and activate other protein substrates within the cell, such as cytoskeletal proteins, to trigger apoptosis. Some caspases

(caspase-1, -4, -5, -11, -12, -13, -14) have a specialized role in inflammation and their activation leads to the processing of pro-inflammatory cytokines. The caspase cascade can be activated by numerous mechanisms, including delivery of granzyme B, apoptosome formation and death cell receptors. Caspase activation leads to characteristic morphological changes of the cell, such as shrinkage, DNA fragmentation, plasma membrane blebbing and chromatin condensation.

Catalog#	Product	Host	Type	Application	Species
NB120-1872	Caspase-1	Rabbit	Polyclonal	IHC-Fr, IHC-P, WB	Hu, Mu, Rt
NB100-56565	Caspase-1 (14F468)	Mouse	Monoclonal	IHC, IHC-P, WB	Hu, Mu
R-1026-100	Caspase-2	Rabbit	Polyclonal	IHC-Fr, IHC-P, IHC, WB	Hu, Rt
NB110-55655	Caspase-2 (Y61)	Rabbit	Monoclonal	FACS, WB	Hu, Mu
NB100-56686	Caspase-2 (18E809.3)	Mouse	Monoclonal	WB	Hu
NB110-55659	Pro-Caspase-3 (E61)	Rabbit	Monoclonal	FACS, ICC, IHC, IP, WB	Hu
NB500-210	Caspase-3 (CPP32 4-1-18)	Mouse	Monoclonal	WB	Hu
NB300-901	Caspase-4	Goat	Polyclonal	PEP-ELISA, WB	Hu
NB110-55661	Caspase-5 (EP876Y)	Rabbit	Monoclonal	ICC, IHC, IP, WB	Hu, Mu, Rt
NB110-55663	Pro-Caspase-6 (EP1325Y)	Rabbit	Monoclonal	FACS, ICC, IHC, IP, WB	Hu, Mu, Rt
NB110-55662	Caspase-6 (E180)	Rabbit	Monoclonal	FACS, ICC, IHC, WB	Hu, Mu
NB100-56114	active/cleaved Caspase-6	Rabbit	Polyclonal	IHC-Fr, IHC-P, IP, WB	Ca, Hu, Mu, Rt
NB500-206	Caspase-7 (Mch3 1-1-11)	Mouse	Monoclonal	WB	Hu, Mu, Rt
NB500-208	Caspase-8 (FLICE 4-1-20)	Mouse	Monoclonal	WB	Hu
NB600-576	Caspase-8	Rabbit	Polyclonal	IHC, IP, WB	Bv, Hu, Mu, Mk, Rt
NB100-56118	active/cleaved Caspase-9	Rabbit	Polyclonal	IHC-Fr, IHC-P, IP, WB	Ca, Hu, Mu, Rt
NB110-55668	Pro-Caspase-9 (E84)	Rabbit	Monoclonal	FACS, IHC, WB	Hu, Mu, Rt
NB500-209	Caspase-9 (LAP6 96-2-22)	Mouse	Monoclonal	WB	Hu
NB110-55654	Pro-Caspase-10 (E35)	Rabbit	Monoclonal	FACS, ICC, IHC, IP, WB	Hu, Mu
NB120-10453	Caspase-10 (25C2)	Rat	Monoclonal	WB	Hu
NB120-10454	Caspase-11 (17D9)	Rat	Monoclonal	IHC-Fr, IP, WB	Mu
NB100-94281	Caspase-12	Rabbit	Polyclonal	WB	Hu, Mu, Rt
NB100-94239	Caspase-13	Rabbit	Polyclonal	WB	Hu, Mu, Rt
NB100-56718	Caspase-14 (70A1426)	Mouse	Monoclonal	WB	Mu

Caspase-1 Antibody NB120-1872



Immunohistochemical analysis of human placenta using NB120-1872.

Species: Hu, Mu, Rt
Applications: WB, IHC-P, IHC-Fr

Pro-Caspase-3 (E61) Antibody NB110-55659



Immunohistochemical analysis of human cervical carcinoma tissue using NB110-55659.

Species: Hu
Applications: FACS, IHC, IP, WB, ICC

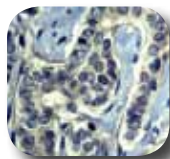
Caspase-3 (CPP32 4-1-18) Antibody NB500-210



Western blot analysis of HEK293 cell extract using NB500-210. Lanes 1 and 2 contain inactive and active Caspase, respectively.

Species: Hu
Applications: WB

Caspase-5 (EP876Y) Antibody NB110-55661



Species: Hu, Mu, Rt
Applications: IHC, IP, WB, ICC

Immunohistochemical analysis of human breast carcinoma using NB110-55661.

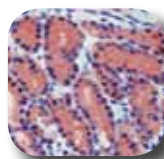
Pro-Caspase-6 (EP1325Y) Antibody NB110-55663



Species: Hu, Mu, Rt
Applications: FACS, IHC, IP, WB, ICC

Immunofluorescent analysis of HeLa cells using NB110-55663.

Caspase-8 Antibody NB600-576



Species: Bv, Hu, Mu, Mk, Rt
Applications: IHC, IP, WB

Immunohistochemical analysis of human stomach stained using NB600-576. Note cytoplasmic staining of endothelial cells.

Caspase-9 (LAP6 96-2-22) Antibody NB500-209



Species: Hu
Applications: WB

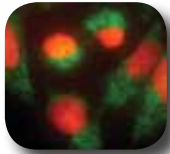
Western blot analysis of 293 cell lysate using NB500-209. Lane 1 and 2 contain inactive and active Caspase, respectively.

Apoptosis Inducing Factor

In addition to the mitochondrial mediated pathway of apoptosis and death receptor signaling pathway of apoptosis, a third mechanism is present. Unlike the intrinsic and extrinsic pathways, this mechanism functions without caspases. Apoptosis-inducing factor (AIF) is a flavoprotein localized to the mitochondrial membrane.

When a cell receives a death signal, often triggered by reactive oxygen species, AIF is released from the mitochondria and translocates to the nucleus where it binds to DNA and triggers apoptosis. Unlike cytochrome c, AIF acts in a caspase-independent fashion.

AIF (E20) Antibody NB110-55446



Immunofluorescent analysis of HeLa cells using NB110-55446. Green - AIF localized in mitochondria; Red - PI nuclear staining.

Species: Hu, Mu, Rt
Applications: FACS, IF, IHC, IP, WB, ICC

AIF Antibody NBP1-46221



Species: Hu
Applications: IP, WB

Iba1 Antibody NB100-1028



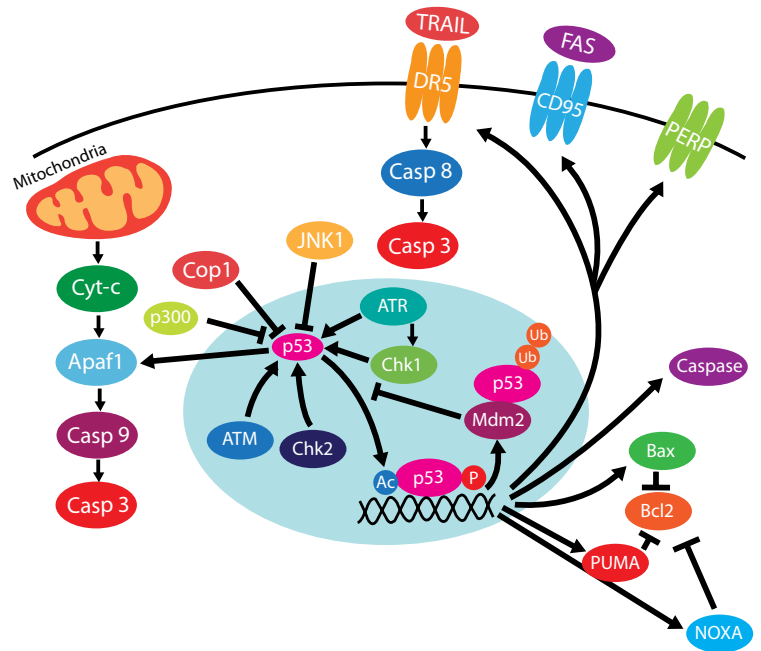
Species: Rt
Applications: PEP-ELISA, WB

Western blot analysis of whole cell lysate from HeLa using NBP1-46221.

Western blot analysis of rat brain lysate using NB100-1028.

p53 and Apoptosis

Tumor protein 53, commonly referred to as Tp53 or p53, is an important protein for apoptosis. This master regulator has far reaching effects on apoptosis; it is capable of affecting both the intrinsic and extrinsic pathways. Control of tumor development is highly dependent on p53 monitoring cell proliferation. Because p53 mutations exist in approximately 50% of tumor cells, the importance of this protein is too great to ignore. p53 can be induced by internal and external stress signals, such as DNA damage, oxidative stress, loss of normal cellular contacts, and radiation.



ATR

The serine/threonine protein kinase ATR responds to DNA damage caused by ionizing radiation, UV damage, and replication stalling. This protein causes

phosphorylation and activation of Chk1, BRCA1, and p53. Activation of these proteins can lead to apoptosis.

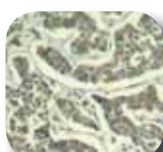
ATR Antibody NB100-322



Western blot analysis of HeLa and U205 cell lysates using NB100-322.

Species: Hu, Mu
Applications: WB

ATR Antibody NBP1-04951



Species: Hu, Mu, Rt
Applications: IHC

ATR (2B5) Antibody NB100-308



Western blot analysis of ATR in Raji whole cell extracts using NB100-308.

Species: Hu
Applications: IF, IP, WB

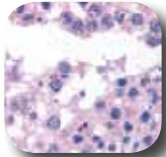
ATM

The ATM protein is related to the PI3-kinase family of proteins through a C-terminal phosphatidylinositol 3-kinase (PI3-kinase) domain. Members of the family are involved in cell cycle control, DNA replication, recombination and repair. The main role of ATM appears to be induction of a DNA-damage control

pathway in response to genotoxic insults, such as ionizing radiation, anti-tumor medications and the programmed DNA breaks of meiosis. ATM has also been linked to apoptosis along with Nbs1 and Chk2 in the E2F1 pathway.

FEATURED
PRODUCT

ATM Antibody NB100-104



Immunohistochemical analysis of testis, seminiferous tubule using NB100-104.

Species: Hu
Applications: IF, IHC, IP, WB

ATM Antibody NB100-104



Western blot analysis of HeLa whole cell lysate using NB100-104.

Species: Hu
Applications: IF, IHC, IP, WB

ATM (5C2) Antibody NB100-220



Western blot analysis of ATM in Raji whole cell extract (lane 1) and T24 synchronized cell lysate (lane 2) using NB100-220.

Species: Hu, Mk, Mu, Rt
Applications: IF, WB

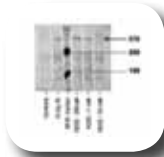
ATM (2C1) Antibody NB100-309



Western blot analysis of ATM in human Raji whole cell extract using NB100-309.

Species: Hu, Mk, Mu, Rt
Applications: IF, IHC, IP, WB

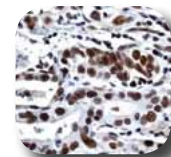
ATM Kinase [Ser1981] (10H11.E12) Antibody NB100-306



Western blot analysis of ATM-kinase using NB100-306.

Species: Hu, Mu, Rt
Applications: ICC, WB

ATM [Ser1981] (EP1890Y) Antibody NB110-66655



Immunohistochemical analysis of human gastric carcinoma using NB110-66655.

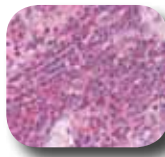
Species: Hu
Applications: IHC, IP, WB, ICC

Chk1

Chk1 is a cell cycle checkpoint kinase induced in response to cellular stress. This protein is activated upon phosphorylation by ATR. While this most often results in stopping the cell cycle, Chk1 has also been

implicated in upregulating the apoptotic response because of caspase dependent cleavage of Chk1. This cleavage results in heightened kinase activity.

Chk1 (6F5) Antibody NBP1-02848



Immunohistochemical analysis of human spleen using NBP1-02848.

Species: Hu
Applications: WB, IHC-P

Chk1 (EP691Y) Antibody NB110-55717



Immunohistochemical analysis of human breast carcinoma using NB110-55717.

Species: Hu
Applications: FACS, IHC, WB, ICC

Chk1 Antibody NB100-91695



Western blot analysis of HeLa whole cell extracts using NB100-91695.

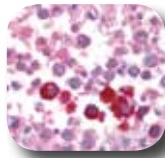
Species: Hu
Applications: ELISA, WB

Chk2

Chk2 is a protein kinase that regulates p53 function in response to ionizing radiation damage. Research shows

that Chk2 is an integral part of transcription independent activation of apoptosis.

Chk2 Antibody NBP1-03065



Immunohistochemical analysis of human testis using NBP1-03065.

Species: Hu, Mu, Rt
Applications: WB, ICC, IHC-P

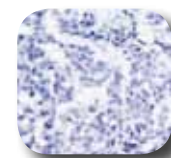
Chk2 [Thr68] Antibody NB100-92502



Immunohistochemical analysis of human breast carcinoma tissue using NB100-92502.

Species: Hu, Mu
Applications: ELISA, IHC-P, WB

Chk2 Antibody NB100-91699



Immunohistochemical analysis of human breast carcinoma tissue using NB100-91699.

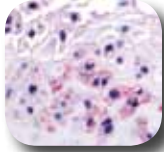
Species: Hu, Mu
Applications: ELISA, IHC-P, WB

DDR1

Discoidin domain receptor 1 (DDR1) is a tyrosine kinase that is a transcriptional target of p53. This protein is suggested to play an important part in a feed-forward loop, increasing the levels of p53. Specifically, this

protein mediates the MAPK cascade through Ras signaling. This oncogene is over-expressed in breast, ovarian, esophageal and pediatric brain tumors.

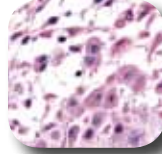
DDR1 Antibody NB110-39011



Immunohistochemical analysis of decidual cells using NB110-39011.

Species: Hu
Applications: IHC-P

DDR1 Antibody NB110-55506



Immunohistochemical analysis of human placenta using NB110-55506.

Species: Hu
Applications: IHC-Fr

DDR1 Antibody H00000780-A01



Western blot analysis against immunogen using H00000780-A01.

Species: Hu
Applications: ELISA, WB

PERP

PERP is a p53 target gene that functions to upregulate expression of p53. However, this protein is only found to be regulated by p53 in certain cell types. PERP has

sequence similarity to PMP-22/gas3, further indicating its direct role in p53 induced apoptosis.

PERP Antibody NB100-2912



Western blot analysis of human liver lysate using NB100-2912.

Species: Hu
Applications: PEP-ELISA, WB

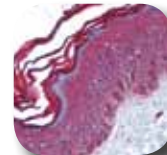
PERP Antibody NBP1-47093



Immunocytochemical analysis of PERP in A431 cells using NBP1-47093

Species: Hu
Applications: ELISA, ICC, WB

PERP Antibody NBP1-02622



Immunohistochemical analysis of human skin using NBP1-02622.

Species: Hu
Applications: WB, ICC, IHC-P

PIG3

The PIG3 protein, generated by the p53 induced gene, belongs to a family of proteins implicated in redox control of p53. In response to genotoxic stress, PIG3 is activated, but the kinetics are slower than other downstream proteins. This may indicate the usefulness of this protein for detecting transient activation of p53.

PIG3 Antibody H00009540-B01



Western Blot analysis of transfected 293T cell line using H00009540-B01. Lane 1 is a TP53I3 transfected lysate and lane 2 is a non-transfected lysate.

Species: Hu
Applications: ELISA, WB

Noxa (114C307.1) Antibody NB600-1159



Species: Hu, Mu
Applications: IHC-P, WB

Western blot analysis of RL-7 cell (a follicular lymphoma) lysate using NB600-1159.

Noxa Antibody H00005366-B01



Species: Hu
Applications: ELISA, WB

Western blot analysis of PMAIP1 expression in 293T cell line by PMAIP1 transfected lysate (1) and non-transfected lysate (2).

Noxa

The Noxa gene is targeted by p53 and, upon activation, serves to produce a pro-apoptotic protein of the Bcl-2 family. Noxa has been implicated in both dependent and independent p53 apoptotic pathways. For the independent pathway, Noxa induction serves to magnify the apoptotic response.

PUMA

PUMA modulates Bax in response to p53, which in turn regulates the release of cytochrome c. Transcription of PUMA is mediated in the nucleus by p53; the fully

functional PUMA protein seeks to free p53 from Bcl-xL in the cytoplasm. Freeing p53 in the cytoplasm allows for mitochondrial induced apoptosis.

PUMA Antibody NBP1-02952



Immunohistochemical analysis of human breast using NBP1-02952.

Species: Hu, Mu
Applications: WB, ICC, IHC-P

PUMA Antibody NB100-56370



Species: Hu, Mu
Applications: IHC, WB

PUMA (EP512Y) Antibody NB110-57443



Immunofluorescent staining of HeLa cells using NB110-57443.

Species: Hu
Applications: FACS, IF, IHC, IP, WB, ICC

MDM2

MDM2 is a cellular proto-oncogene that functions to affect the transcriptional activation by p53. This protein binds p53 and transports it to the cytoplasm, where Mdm2 then signals for degradation by ubiquitination.

Activation of Mdm2 is triggered in response to p53 activation and together the proteins act as a negative feedback loop.

MDM2 Antibody NB100-91863



Immunohistochemical analysis of human breast carcinoma tissue using NB100-91863.

Species: Hu, Mu
Applications: ELISA, IF, IHC-P, WB

MDM2 Antibody NB100-92079



Species: Hu, Mu
Applications: ELISA, WB

MDM2 Antibody NB100-2827



Species: Hu
Applications: PEP-ELISA, WB

Western blot analysis of human liver lysate using NB100-2827.

COP1

COP1 is a ring finger containing protein that binds p53 and targets it for degradation by the proteasome via ubiquitination. COP1 is capable of functioning without

Mdm2. Stabilization of this protein requires phosphorylation of the protein.

COP1 Antibody NB110-40496



Western blot analysis of HeLa whole cell lysate, 293T and mouse NIH/3T3 cells using NB110-40496.

Species: Hu, Mu
Applications: IP, WB

COP1 (1E4) Antibody H00064326-M01



Species: Hu
Applications: ELISA, IF, WB

COP1 Antibody NB110-40498



Species: Hu, Mu
Applications: IP

Immunoprecipitation of NB110-40498 on HeLa whole cell lysate.

JNK1

The JNK1 protein modulates the activation of p53. With sustained activation during apoptosis, it serves to

downregulate expression of p53.

JNK1 [Thr183] Antibody NB100-82009



Immunohistochemical analysis of human breast carcinoma tissue using NB100-82009.

Species: Hu, Mu, Rt
Applications: IHC

JNK1 Antibody NB100-1925



Species: Ce
Applications: IP, WB

Western blot analysis of JNK-1 using NB100-1925.

JNK1 Antibody NB120-7949



Species: Hu, Mu, Rt
Applications: IHC-Fr, IP, WB

Western blot analysis of JNK1 p46 expression in A431 (lane A) and HeLa (lane B) using NB120-7949.

KAT3B/p300

The p300 protein has the ability to activate and inactivate p53. The acetyl transferase domain of this protein adds an acetyl group to p53, which effectively activates and stabilizes the protein. For degradation,

p300 may serve as a bridge to the proteasome. p300 also stabilizes p53 and allows it to be targeted for degradation. The p53-p300-Mdm2 complex results in polyubiquitination of p53.

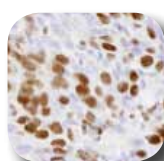
KAT3B/p300 Antibody NB100-92193



Western blot analysis of 293 cells using NB100-92193.

Species: Hu, Mu
Applications: ELISA, WB

KAT3B/p300 Antibody NB100-1745



Immunohistochemical analysis of human breast adenocarcinoma using NB100-1745.

Species: Hu
Applications: IHC

KAT3B/p300 (RW109) Antibody NB100-617



Western blot analysis of HeLa nuclear extract using NB100-617.

Species: Hu, Mu, Mk, Rt
Applications: IF, IP, WB

Featured Apoptosis Antibodies

NOD2

NOD2 is a member of the apoptosis regulating protein family that includes caspase recruitment-domains, as well as Apaf-1 and NOD1. It contains two N-terminal CARDs, a nucleotide binding domain (NBD), and multiple C-terminal leucine-rich repeats (LRRs). NOD2

is expressed in monocytes (whereas NOD1 is expressed in multiple tissues). NOD2 plays a role in regulating NF-kappaB, acts as an intracellular receptor for bacterial lipopolysaccharides, and contributes to inflammatory bowel disease (IBD) and Crohn's disease.

NOD2 (2D9) Antibody NB100-524



Western blot analysis of NOD2 transfected 293T cell lysate using NB100-524.

Species: Hu, Mk
Applications: IP, WB, IHC-P

NOD2 Antibody NB500-253



Western blot analysis of NOD2 transfected 293T cell lysate using NB500-253.

Species: Hu
Applications: WB

**NOD2 Antibody
SuperNovus Pack
NB100-935**
Includes: NB100-524
and NB500-253

HRD1

HRD1 is a ubiquitin ligase whose expression is induced by the unfolded protein response following endoplasmic reticulum (ER) stress. Expression of HRD1 protects cells from apoptosis by inducing degradation of abnormally processed proteins that accumulate in the ER. HRD1 is expressed in many tissues, and is strongly expressed in brain, pancreas, liver, kidney and skeletal muscle.

HRD1 Antibody NB100-2526



Western blot analysis of an endogenous 293T cell lysate using NB100-2526.

Species: Hu, Mu
Applications: WB

TOM70

Nearly all mitochondrial proteins are synthesized as precursors in the cytoplasm. These precursor proteins are transported into the mitochondria with the help of cytosolic chaperones and mitochondrial translocators, such as Translocators of the Outer Membrane (TOMs) and Translocators of the Inner Membrane (TIMs). TOM70 is a receptor that accelerates the import of all mitochondrial precursor proteins.

TOM70 Antibody NB110-58347



Western blot analysis of TOM70 in MCF7 mitochondrial extracts using NB110-58347.

Species: Hu, Mu, Rt
Applications: WB



IN THE NEWS

1. [\[ATG5 NB110-53818\]](#) Wang RC, Levine B. Calcipotriol Induces Autophagy in HeLa Cells and Keratinocytes. *J Invest Dermatol*. 2011 Jan 13. [PMID 21228817]
2. [\[ATG5 NB110-53818\]](#) Wang Y, et al. Loss of macroautophagy promotes or prevents fibroblast apoptosis depending on the death stimulus. *J Biol Chem*. 2008 Feb 22;283(8):4766-77. Epub 2007 Dec 11. [PMID 18073215]
3. [\[Beclin 1 NB110-87318\]](#) Bellot G, et al. Hypoxia-induced autophagy is mediated through hypoxia-inducible factor induction of BNIP3 and BNIP3L via their BH3 domains. *Mol Cell Biol*. 2009 May;29(10):2570-81. Epub 2009 Mar 9. [PMID 19273585]
4. [\[Caf1p150 NB500-207\]](#) Ghosh JC, et al. Hsp60 regulation of tumor cell apoptosis. *J Biol Chem*. 2008 Feb 22;283(8):5188-94. Epub 2007 Dec 17. [PMID 18086682]
5. [\[Caspase 3 NB500-210\]](#) Gould Rothberg BE, Bracken MB, Rimm DL. Tissue biomarkers for prognosis in cutaneous melanoma: a systematic review and meta-analysis. *J Natl Cancer Inst*. 2009 Apr 1;101(7):452-74. Epub 2009 Mar 24. Review. [PMID 19318635]
6. [\[CIDEC NB100-430\]](#) Guillén N, et al. Microarray analysis of hepatic gene expression identifies new genes involved in steatotic liver. *Physiol Genomics*. 2009 May 13;37(3):187-98. Epub 2009 Mar 3. [PMID 19258494]
7. [\[IRE-1 alpha NB100-2323\]](#) Qiu Y, et al. A crucial role for RACK1 in the regulation of glucose-stimulated IRE1alpha activation in pancreatic beta cells. *Sci Signal*. 2010 Jan 26;3(106):ra7. [PMID 20103773]
8. [\[LC3 NB100-2220\]](#) Xu B, et al. Proliferating cell nuclear antigen (PCNA) regulates primordial follicle assembly by promoting apoptosis of oocytes in fetal and neonatal mouse ovaries. *PLoS One*. 2011 Jan 6;6(1):e16046. [PMID 21253613]
9. [\[MMP2 NB200-114\]](#) Raaf L, et al. Myocardial fibrosis and TGFβ expression in hyperhomocysteinemic rats. *Mol Cell Biochem*. 2011 Jan;347(1-2):63-70. [PMID 20938722]
10. [\[NOD2 NB500-253\]](#) Till A, et al. A role for membrane-bound CD147 in NOD2-mediated recognition of bacterial cytoinvasion. *J Cell Sci*. 2008 Feb 15;121(Pt 4):487-95. [PMID 18256385]
11. [\[PERP NB500-231\]](#) Singaravelu K, et al. PERP, a p53 proapoptotic target, mediates apoptotic cell death in renal ischemia. *Am J Physiol Renal Physiol*. 2009 Apr;296(4):F847-58. Epub 2009 Jan 21. [PMID 19158346]
12. [\[Rab20 H00055647-B01P\]](#) Hackenbeck T, et al. The GTPase RAB20 is a HIF target with mitochondrial localization mediating apoptosis in hypoxia. *Biochim Biophys Acta*. 2011 Jan;1813(1):1-13. Epub 2010 Nov 5. [PMID 21056597]
13. [\[Survivin NB500-201\]](#) Lou Y, et al. Oral administration of caffeine during voluntary exercise markedly decreases tissue fat and stimulates apoptosis and cyclin B1 in UVB-treated skin of hairless p53-knockout mice. *Carcinogenesis*. 2010 Apr;31(4):671-8. Epub 2009 Nov 19. [PMID 19926639]



ORDERING

U.S. ORDERING

Phone: 303.730.1950
888.506.6887
Fax: 303.730.1966
Email: orders@novusbio.com
Web: www.novusbio.com

EUROPEAN ORDERING

Phone: +44 (0) 1223 426001
Fax: +44 (0) 871 971 1635
Email: europe@novusbio.com
Web: www.novusbio.com

CANADIAN ORDERING

Phone: 855.NOVUS.CA
289-800-2450
Fax: 647.930.1855
Email: canada@novusbio.com
Web: www.novusbio.com

TECHNICAL SUPPORT

Phone: 303.730.1950
888.506.6887
Email: technical@novusbio.com

Chat with a Scientist featured on our website: www.novusbio.com