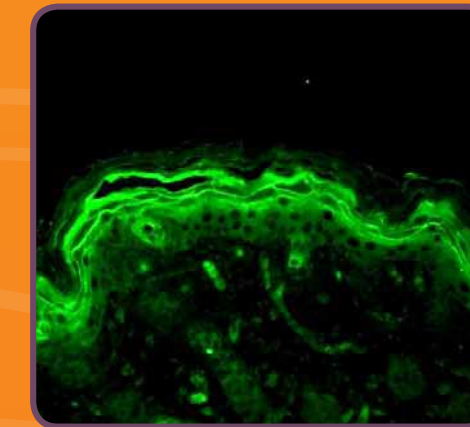
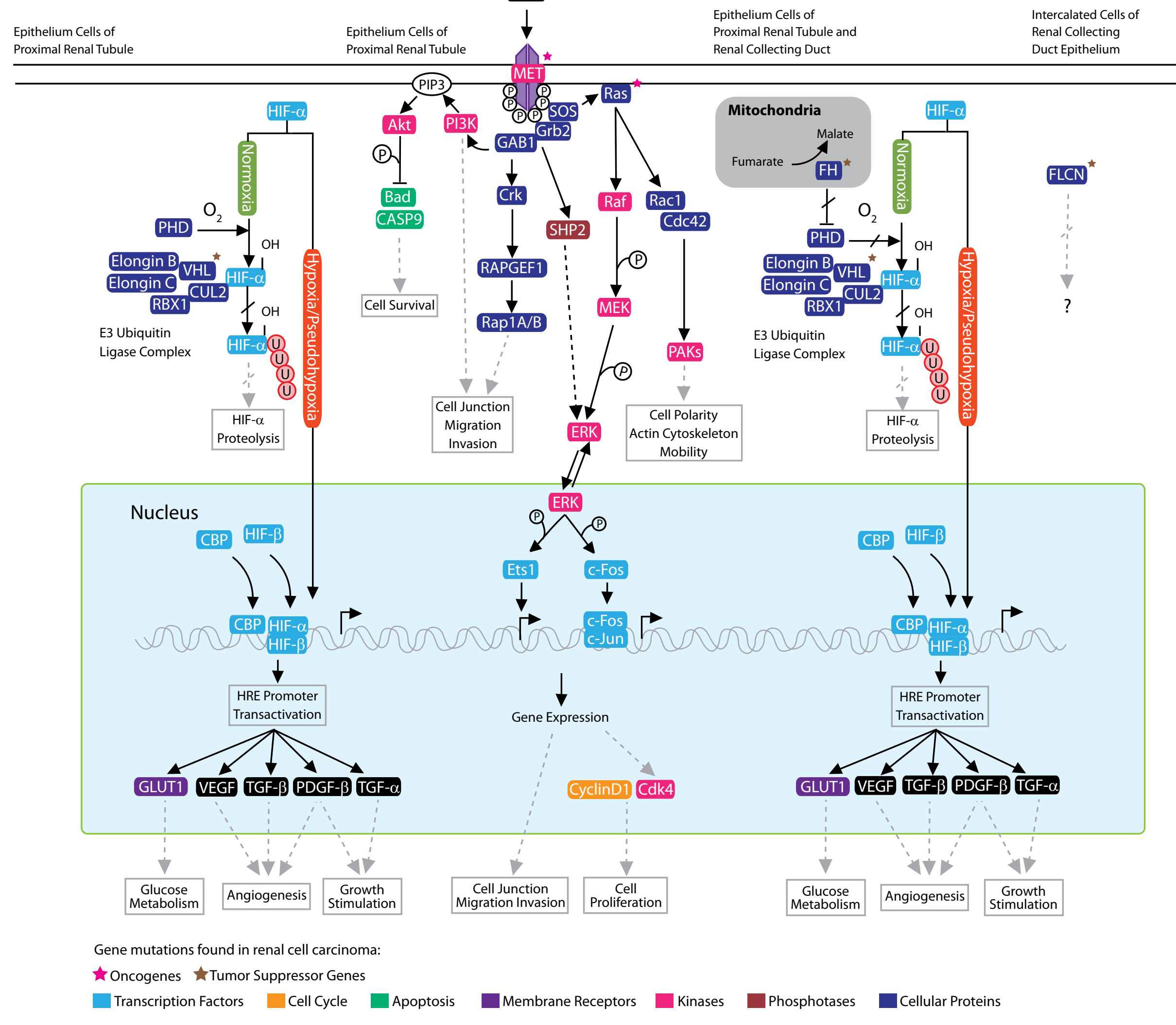
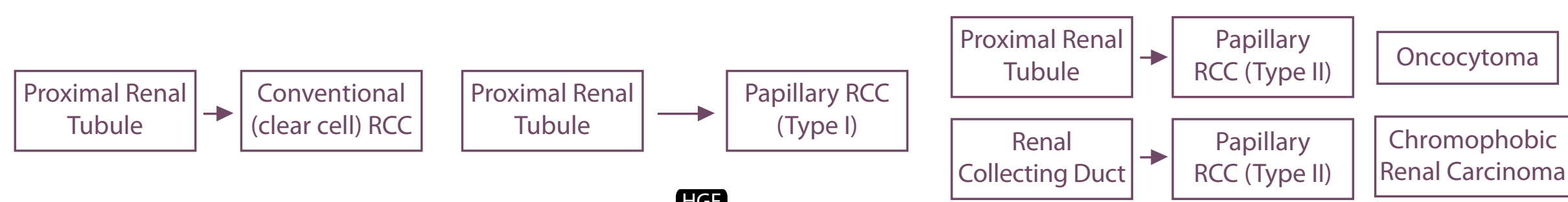
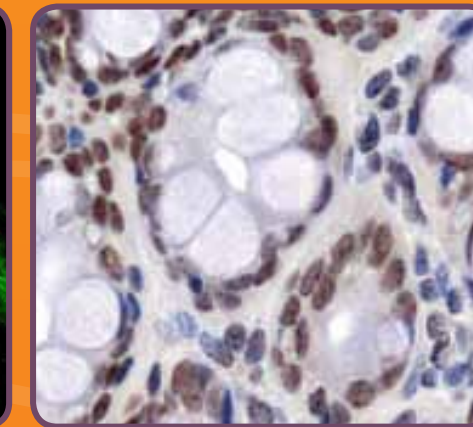


Renal Cell Carcinoma Pathway

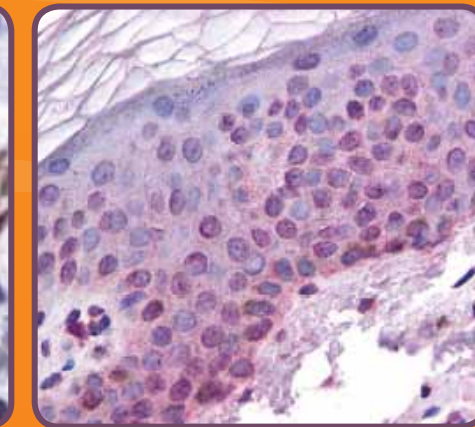
Renal cell carcinoma (RCC) is the most common type of kidney cancer in adults, responsible for approximately 90-95% of neoplasms arising from the kidney, and is the most lethal of all of the genitourinary tumors. In at least 60% of these tumors, the von Hippel-Lindau (VHL) tumor-suppressor gene is inactivated. Cells deficient in VHL accumulate HIF- α under conditions of normal oxygen tension and have increased expression of HIF-regulated genes. Constitutively activated oncogene c-MET, found in hereditary papillary renal cancer (HPRC), initiates multiple signaling cascades, resulting in various cellular processes. Mutated fumarate hydratase (FH), a Krebs cycle enzyme, is found in type II HPRC and acts as a tumor suppressor. Fumarate accumulation occurs when FH function is impaired and prevents HIF hydroxylation by inhibiting PHD, which leads to activation of HIF regulated genes.



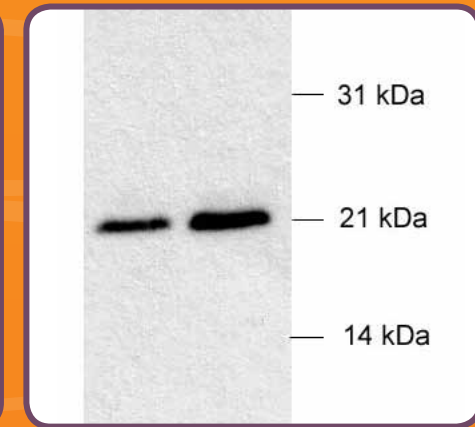
NB110-96887 • ERK1/2



NB110-39113 • GLUT1



NB100-110 • HIF-1 beta



NB100-485 • von Hippel Lindau

Antibodies for Renal Cell Carcinoma Research

| Catalog # | Product | Host | Clonality | Applications | Species |
|---------------|--------------------------------------|--------|------------|--------------------------------------|--|
| NBP1-19615 | ARNT2 Antibody | Rabbit | Polyclonal | WB | Hu, Mu, Rt |
| NB100-2088 | Cdk4 Antibody | Rabbit | Polyclonal | IF, IHC-P, IP, WB | Hu, Mu, Rt |
| NB110-75039 | c-Fos Antibody | Rabbit | Polyclonal | IF, IHC, WB | Mu, Rt |
| NBP1-19285 | c-Jun Antibody | Rabbit | Polyclonal | IF, IHC, WB | Bv, Ca, Ch, Dr, Gp, Hu, Mk, Mu, Po, Rb, Rt, Sh, Xp |
| NB300-884 | Crkl Antibody | Goat | Polyclonal | PEP-ELISA, WB | Hu |
| NB120-1870 | Cullin 2 Antibody | Rabbit | Polyclonal | IHC-Fr, IHC-P, IP, WB | Hu, Mu |
| NB110-56901 | Cyclin D1 (EP272Y) Antibody | Rabbit | Monoclonal | ICC, IHC, IP, WB | Hu, Rt |
| H00006923-M01 | Elongin B / TCEB2 (6F6) Antibody | Mouse | Monoclonal | ELISA, IF, WB | Hu |
| NB100-78353 | Elongin C / TCEB1 Antibody | Rabbit | Polyclonal | WB | Hu, Mu |
| NB500-141 | ERK1 [Thr202/Tyr204] Antibody | Rabbit | Polyclonal | IHC, WB | Hu, Mu, Rt, Xp |
| NB110-96887 | ERK1/2 Antibody | Rabbit | Polyclonal | FACS, IF, IHC, WB | Bv, Ch, Dr, Hu, Mu, Rt, Sh, Xp |
| NB110-57174 | ERK2 [E460] Antibody | Rabbit | Monoclonal | FACS, ICC, IHC, IP, WB | Hu, Mu, Rt |
| NB100-92169 | ETS1 Antibody | Rabbit | Polyclonal | ELISA, IF, IHC-P, WB | Hu, Mu |
| H00201163-A01 | FLCN Antibody | Mouse | Polyclonal | ELISA, WB | Hu |
| H00002271-M09 | Fumarase (3E7) Antibody | Mouse | Monoclonal | ELISA, IHC-P, WB | Hu |
| NB120-15298 | GAB1 Antibody | Rabbit | Polyclonal | IHC-P | Hu, Mk, Mu, Rt |
| NB110-39113 | GLUT1 Antibody | Rabbit | Polyclonal | ICC, IF, IHC-P, WB | Bv, Hu, Mk, Mu, Rb, Rt |
| NB110-57013 | GRB2 (Y237) Antibody | Rabbit | Monoclonal | ICC, IHC, IP, WB | Hu, Mu, Rt |
| H00002889-B01 | GRF2 Antibody | Mouse | Polyclonal | ELISA, IF, WB | Hu |
| NBP1-19180 | HGF (A10) Antibody | Mouse | Monoclonal | IHC, IP, WB | Hu |
| NB100-105 | HIF-1 alpha (H1alpha67) Antibody | Mouse | Monoclonal | ChIP, ICC, IF, IHC-Fr, IHC-P, IP, WB | Bv, Ft, Hu, Mk, Mu, Po, Rb, Rt, Sh |
| NB100-110 | HIF-1 beta Antibody | Rabbit | Polyclonal | ChIP, IHC-P, IP, WB | Bv, Ft, Hu, Mu, Rt, Sh |
| NB100-122 | HIF-2 alpha Antibody | Rabbit | Polyclonal | ChIP, ICC, IF, IHC-P, IP, WB | Fi, Hu, Mu, Rt |
| NB100-381 | KAT3A / CBP Antibody | Rabbit | Polyclonal | IP, WB | Hu |
| NB100-616 | KAT3B / p300 (RW105) Antibody | Mouse | Monoclonal | IF, IP, WB | Hu, Mk, Mu, Rt |
| NB110-57191 | MEK1 [Ser218/Ser222] (E237) Antibody | Rabbit | Monoclonal | ICC, IHC, IP, WB | Hu |
| NB100-954 | KAT3A / CBP Antibody Pack | Rabbit | Polyclonal | IP | Hu |
| NBP1-19491 | Met (E999) Antibody | Rabbit | Monoclonal | IF, WB | Hu, Mu, Rt |
| NB500-138 | p38 [Thr180/Tyr182] Antibody | Rabbit | Polyclonal | IHC, WB | Bv, Ca, Ch, Hu, Mk, Mu, Rt, Ze |
| NB100-188 | PAK6 Antibody | Rabbit | Polyclonal | IP, WB | Bv, Hu |
| NB100-91927 | PDGFB Antibody | Rabbit | Polyclonal | ELISA, WB | Hu, Mu, Rt |
| NB110-57571 | PTPN11 (Y478) Antibody | Rabbit | Monoclonal | IHC, IP, WB | Hu |
| NB100-91266 | Rac1 Antibody | Rabbit | Polyclonal | IHC | Hu, Mu, Rt |
| H00005906-M01 | RAP1A (3E1) Antibody | Mouse | Monoclonal | ELISA, WB | Hu |
| NB100-1672 | RBX1 Antibody | Rabbit | Polyclonal | IHC, IP, WB | Ce, Hu, Mu, Ze |
| NB110-68800 | SOS1 (SOS-1) Antibody | Mouse | Monoclonal | ELISA, WB | Hu |
| NBP1-05958 | SOS2 Antibody | Rabbit | Polyclonal | IP, WB | Hu |
| NB100-91993 | TGF alpha Antibody | Rabbit | Polyclonal | IHC-P, WB | Hu, Mu, Rt |
| NB100-91995 | TGF beta 1 [Y369] Antibody | Rabbit | Polyclonal | ELISA, IHC-P, WB | Hu, Mu, Rt |
| NBP1-45892 | TGF beta 2 Antibody | Rabbit | Polyclonal | WB | Hu, Mu, Rt |
| NB600-1531 | TGF beta 3 Antibody | Rabbit | Polyclonal | IHC-P, IP, WB | Hu, Mu, Rt |
| NB100-664 | VEGF (Vg1) Antibody | Mouse | Monoclonal | IF, IHC-Fr, WB | Ca, Hu, Mu, Rt |
| NB100-485 | von Hippel Lindau Antibody | Rabbit | Polyclonal | WB | Hu |