

SECONDARY ANTIBODIES

Antibody Conjugation Kits • Antibody Purification Kits
ATPase/GTPase Assays • Isotype Controls

 **NOVUS**
BIOLOGICALS®
Today's Research. Tomorrow's Discovery.

Table of Contents

Fluoro-Trap™ Fluorescein Labeling Kits **1**

AbSelect™ Antibody Purification System **1**

Detection Reagents for Phosphatases, ATPases, and Nucleotidases..... **1**

Lightning Link™ Antibody Conjugation Kits **2**

Colorimetric ATPase and GTPase Assay Systems..... **3**

Secondary Antibodies **3-10**

Anti-Alligator **3**

Anti-Bat **3**

Anti-Bird **3**

Anti-Bovine **3**

Anti-Chicken **3-4**

Anti-Dog **4**

Anti-Donkey **4**

Anti-Feline **3**

Anti-Ferret **4**

Anti-Goat **4-5**

Anti-Guinea Pig **5**

Anti-Hamster **5**

Anti-Horse **5**

Anti-Human **5-6**

Anti-Llama **6**

Anti-Macaw **6**

Anti-Monkey **6**

Anti-Mouse **6-8**

Anti-Opossum **8**

Anti-Pig **8**

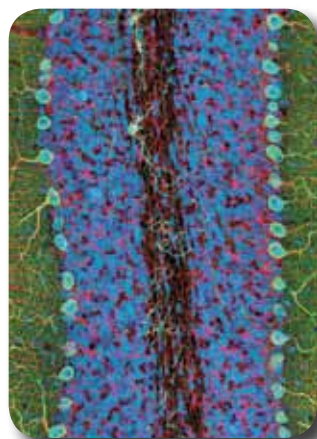
Anti-Rabbit **8-9**

Anti-Rat **9-10**

Anti-Sheep **10**

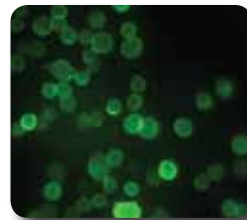
Isotype Controls **10**

Novus Biologicals distributes for Innova Biosciences. Visit innovabiosciences.com



Cover Photo

Fluoro-Trap™ Fluorescein Labeling Kits



- No tricky powder weighing.
- No required desalting/dialysis steps.
- No solvents.
- Minimal protein dilution.
- Simple procedure requiring only a few minutes hands-on time.

Available Kits:	Size:	Catalog #:
Fluoro-Trap™ Kit	(3 x) 0.1 mg	711-0001
Fluoro-Trap™ Kit	(5 x) 1.0 mg	711-0010

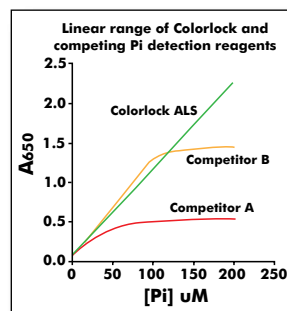
AbSelect™ Antibody Purification System

- Removes BSA, glycine, tris, and azide.
- Works on samples from 0.1 ml to 0.5 ml per purification.
- Fully compatible with the Lightning Link™ Conjugation Kits.
- Only requires simple washing steps.

Available Kits:	Size:	Catalog #:
AbSelect™ Kit	1 purification	860-0005
AbSelect™ Kit	3 purifications	860-0010

Detection Reagents for Phosphatases, ATPases, and Nucleotidases

- Unparalleled stability of Pi-dye complexes.
- Special additive ensures low backgrounds with acid-labile substrates.
- Reagent is compatible with most assay buffers.
- No inhibition of color development by high concentrations of protein.
- Stable reagent formulation - long shelf life.

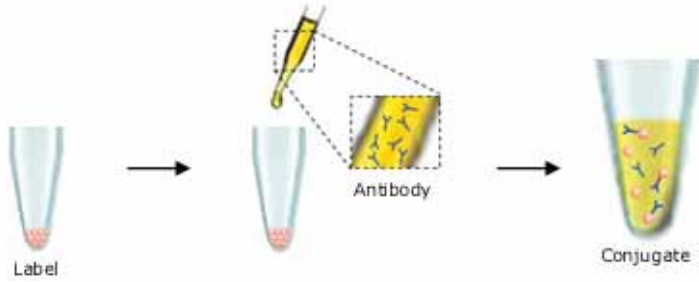


Available Kits:	Sensitivity:	Size*:	Catalog #:
PiColorlock ALS	Standard	625 assays	302-0125
PiColorlock ALS	Standard	2500 assays	302-0500
PiColorlock Gold	High	625 assays	303-0030
PiColorlock Gold	High	2500 assays	303-0125

* With 96-well microplate

Lightning Link™ Antibody Conjugation Kits

Single Vial Antibody Conjugation is Now Possible!



- 30-seconds hands on time.
- Works on amounts as small as 0.05 mg.
- Nearly 100% antibody recovery.
- No desalting or purification steps required.
- High reproducibility.
- No non-specific signals.

Label	Catalog #:	Size:	Label:	Catalog #:	Size:
Avidin	717-0010	(3 x) 0.1 mg	Cy 3.5	784-0010	(3 x) 0.1 mg
	717-0015	(1 x) 1.0 mg		784-0015	(1 x) 1.0 mg
Allophycocyanin	705-0005	(1 x) 0.1 mg	Cy 5	781-0010	(3 x) 0.1 mg
	705-0010	(3 x) 0.1 mg		781-0015	(1 x) 1.0 mg
	705-0015	(1 x) 1.0 mg	Cy 5.5	782-0010	(3 x) 0.1 mg
Alkaline Phosphatase	702-0005	(1 x) 0.1 mg		782-0015	(1 x) 1.0 mg
	702-0010	(3 x) 0.1 mg	Cy 7	783-0010	(3 x) 1.0 mg
	702-0015	(1 x) 1.0 mg		783-0015	1.0 mg
Biotin (Type A)	704-0010	0.2 mg scale	Fluorescein	707-0010	1.0 - 2.0 mg scale
	704-0015	2.0 mg scale		707-0015	1.0 - 2.0 mg scale
Biotin (Type B)	715-0010	0.2 mg scale	Glucose Oxidase	706-0010	(3 x) 0.1 mg
	715-0015	2.0 mg scale		706-0015	(1 x) 1.0 mg
B-Phycoerythrin	716-0005	(1 x) 0.1 mg	HRP	701-0010	(1 x) 0.1 mg
	716-0010	(3 x) 0.1 mg		701-0000	(3 x) 0.1 mg
	716-0015	(1 x) 1.0 mg		701-0002	(1 x) 1.0 mg
C-Phycocyanin	709-0005	(1 x) 0.1 mg		701-0003	(5 x) 1.0 mg
	709-0010	(3 x) 0.1 mg	R-Phycoerythrin	701-0004	(1 x) 5.0 mg
	709-0015	(1 x) 1.0 mg		703-0005	(1 x) 0.1 mg
Cy 3	780-0010	(3 x) 0.1 mg		703-0010	(3 x) 0.1 mg
	780-0015	(1 x) 1.0 mg	Streptavidin	703-0015	(1 x) 1.0 mg
				708-0010	(3 x) 0.1 mg
				708-0015	(1 x) 1.0 mg

More kits available on www.novusbio.com, Search: Lightning Link



IN THE NEWS

1. Marr, A. K., et al. Bovine lactoferrin and lactoferricin interfere with intracellular trafficking of Herpes simplex virus-Biochimie (2009); 91(1):160-4 [PMID:18573311].
2. Al-Dujaili, E. A., et al. Development of a highly sensitive ELISA for aldosterone in mouse urine: validation in physiological and pathophysiological states of aldosterone excess and depletion. Steroids (2009); 74(4-5):456-62 [PMID:19162057].
3. Bao, S., et al. Targeting cancer stem cells through L1CAM suppresses glioma growth. Cancer Research (2008); 68(15):6043-8 [PMID:18676824].
4. Velappan N. et al. Fluorescence linked immunosorbant assays using microtiter plates. Journal of Immunol. Methods (2008); 336(2):135-41 [PMID:18514691].

Colorimetric ATPase and GTPase Assay Systems

- Specially purified, Pi-free ATP or GTP.
- PiColorlock Gold (superior malachite formulation).
- Stabilizer prevents high backgrounds from non-enzymatic Pi release. No precipitation of dye-Pi complexes.
- High sensitivity (OD 1 for 5% substrate hydrolysis).
- Supplied with Pi standard and 96-well microplates.



Available Kits:

ATPase Assay Kit
 ATPase Assay Kit
 ATPase Assay Kit
 GTPase Assay Kit
 GTPase Assay Kit
 GTPase Assay Kit

Size:

192 assays
 480 assays
 (5 x) 280 assays
 192 assays
 480 assays
 (5 x) 480 assays

Catalog #:

601-0120
 601-0121
 601-0122
 602-0120
 602-0121
 602-0122

Secondary Antibodies

Catalog #	Reactivity	Host	Conjugate
	Alligator IgG: See Website		
	Bat IgG: See Website		
	Bird IgG: See Website		
NB771	Bovine IgA	Rabbit	AP
NB796	Bovine IgA	Sheep	AP
NB772	Bovine IgA	Rabbit	FITC
NB797	Bovine IgA	Sheep	FITC
NB773	Bovine IgA	Rabbit	HRP
NB798	Bovine IgA	Sheep	HRP
NB770	Bovine IgA	Rabbit	
NB795	Bovine IgA	Sheep	
NB120-6935	Bovine IgG	Goat	AP
NB120-6928	Bovine IgG	Rabbit	AP
NB791	Bovine IgG - Heavy chain specific	Sheep	AP
NB792	Bovine IgG - Heavy chain specific	Sheep	FITC
NB793	Bovine IgG - Heavy chain specific	Sheep	HRP
NB790	Bovine IgG - Heavy chain specific	Sheep	
NB120-7014	Bovine IgG (H and L)	Goat	Agarose Immobilized
NB764	Bovine IgG (H and L)	Rabbit	AP
NB776	Bovine IgG (H and L)	Sheep	AP
NB120-6933	Bovine IgG (H and L)	Goat	Biotin
NB120-6926	Bovine IgG (H and L)	Rabbit	Biotin
NB7595	Bovine IgG (H and L)	Goat	FITC
NB765	Bovine IgG (H and L)	Rabbit	FITC
NB777	Bovine IgG (H and L)	Sheep	FITC
NB120-6934	Bovine IgG (H and L)	Goat	HRP
NB766	Bovine IgG (H and L)	Rabbit	HRP
NB778	Bovine IgG (H and L)	Sheep	HRP
NB120-6931	Bovine IgG (H and L)	Goat	Rhodamine
NB120-6924	Bovine IgG (H and L)	Rabbit	Rhodamine
NB120-6932	Bovine IgG (H and L)	Goat	Texas Red
NB120-6925	Bovine IgG (H and L)	Rabbit	Texas Red
NB768	Bovine IgG (H and L)	Donkey	

Catalog #	Reactivity	Host	Conjugate
NB120-6929	Bovine IgG (H and L)	Goat	
NB763	Bovine IgG (H and L)	Rabbit	
NB775	Bovine IgG (H and L)	Sheep	
NB781	Bovine IgG1	Sheep	AP
NB782	Bovine IgG1	Sheep	FITC
NB783	Bovine IgG1	Sheep	HRP
NB780	Bovine IgG1	Sheep	
NB786	Bovine IgG2	Sheep	AP
NB787	Bovine IgG2	Sheep	FITC
NB788	Bovine IgG2	Sheep	HRP
NB785	Bovine IgG2	Sheep	
NB754	Bovine IgM	Rabbit	AP
NB759	Bovine IgM	Sheep	AP
NB755	Bovine IgM	Rabbit	FITC
NB760	Bovine IgM	Sheep	FITC
NB756	Bovine IgM	Rabbit	HRP
NB761	Bovine IgM	Sheep	HRP
NB753	Bovine IgM	Rabbit	
NB758	Bovine IgM	Sheep	
NB7282	Chicken IgA	Goat	AP
NB7283	Chicken IgA	Goat	FITC
NB7284	Chicken IgA	Goat	HRP
NB7281	Chicken IgA	Goat	
NB7287	Chicken IgG - Fc	Goat	AP
NB7288	Chicken IgG - Fc	Goat	FITC
NB7289	Chicken IgG - Fc	Goat	HRP
NB7286	Chicken IgG - Fc	Goat	
NB7292	Chicken IgG (H and L)	Goat	AP
NB7293	Chicken IgG (H and L)	Rabbit	Biotin
NB7294	Chicken IgG (H and L)	Goat	FITC
NB7298	Chicken IgG (H and L)	Rabbit	FITC
NB7299	Chicken IgG (H and L)	Rabbit	HRP
NB7297	Chicken IgG (H and L)	Rabbit	

Catalog #	Reactivity	Host	Conjugate
NB7301	Chicken IgG (H and L) Cross-adsorbed	Goat	AP
NB7302	Chicken IgG (H and L) Cross-adsorbed	Goat	FITC
NB7303	Chicken IgG (H and L) Cross-adsorbed	Goat	HRP
NB7305	Chicken IgG (H and L) Cross-adsorbed	Rabbit	HRP
NB7300	Chicken IgG (H and L) Cross-adsorbed	Goat	
NB7304	Chicken IgG (H and L) Cross-adsorbed	Rabbit	
NB7277	Chicken IgM	Goat	AP
NB7278	Chicken IgM	Goat	FITC
NB7279	Chicken IgM	Goat	HRP
NB7276	Chicken IgM	Goat	
NB710-57838	Chicken IgY	Goat	AP
NB710-57833	Chicken IgY	Goat	Biotin
NB120-6752	Chicken IgY	Rabbit	Biotin
NB710-57837	Chicken IgY	Goat	FITC
NB120-16349	Chicken IgY	Donkey	HRP
NB710-57832	Chicken IgY	Goat	HRP
NB710-3882	Chicken IgY	Rabbit	Texas Red
NB710-58349	Chicken IgY	Goat	
NB120-6754	Chicken IgY (H and L)	Rabbit	AP
NB7587	Chicken IgY (H and L)	Goat	Biotin
NB120-6960	Chicken IgY (H and L)	Goat	Cy2
NB120-6961	Chicken IgY (H and L)	Goat	Cy3
NB120-6962	Chicken IgY (H and L)	Goat	Cy3.5
NB120-6569	Chicken IgY (H and L)	Goat	Cy5
NB120-6963	Chicken IgY (H and L)	Goat	Cy5.5
NB7608	Chicken IgY (H and L)	Goat	HRP
NB7295	Chicken IgY (H and L)	Goat	HRP
NB120-6874	Chicken IgY (H and L)	Goat	Rhodamine
NB120-6750	Chicken IgY (H and L)	Rabbit	Rhodamine
NB120-6875	Chicken IgY (H and L)	Goat	Texas Red
NB7291	Chicken IgY (H and L)	Goat	
NB120-7117	Chicken IgY (H and L) Pre-adsorbed	Rabbit	Biotin
NB120-7115	Chicken IgY (H and L) Pre-adsorbed	Goat	Rhodamine
NB120-7116	Chicken IgY (H and L) Pre-adsorbed	Goat	Texas Red
NB120-8923	Chicken IgY [7C2]	Mouse	Biotin
NB120-8922	Chicken IgY [7C2]	Mouse	
	Dog IgA, IgE, IgG, IgM: See Website		
NB120-6766	Donkey IgG	Rabbit	AP
NB120-6987	Donkey IgG (H and L)	Goat	Biotin
NB120-6764	Donkey IgG (H and L)	Rabbit	Biotin
NB7577	Donkey IgG (H and L)	Goat	FITC
NB710-4007	Donkey IgG (H and L)	Rabbit	FITC
NB120-6988	Donkey IgG (H and L)	Goat	HRP
NB120-6765	Donkey IgG (H and L)	Rabbit	HRP
NB120-6985	Donkey IgG (H and L)	Goat	Rhodamine
NB120-6762	Donkey IgG (H and L)	Rabbit	Rhodamine
NB120-6986	Donkey IgG (H and L)	Goat	Texas Red
NB120-6763	Donkey IgG (H and L)	Rabbit	Texas Red
NB120-6989	Donkey IgG (H and L)	Goat	
NB7220	Donkey IgG (H and L)	Rabbit	
	Feline IgA, IgG, IgM: See Website		
	Ferret IgA, IgG: See Website		
NB7370	Goat IgA	Rabbit	AP
NB7371	Goat IgA	Rabbit	FITC
NB7372	Goat IgA	Rabbit	HRP

Catalog #	Reactivity	Host	Conjugate
NB7369	Goat IgA	Rabbit	
NB710-AP	Goat IgG	Rabbit	AP
NB710-B	Goat IgG	Rabbit	Biotin
NB7606	Goat IgG	Donkey	Cy5
NB710-58353	Goat IgG	Chicken	FITC
NB710-F	Goat IgG	Rabbit	FITC
NB710-57835	Goat IgG	Chicken	HRP
NB710-H	Goat IgG	Rabbit	HRP
NB7590	Goat IgG	Donkey	PE
NB710-58357	Goat IgG	Chicken	
NB7360	Goat IgG - Fc	Rabbit	AP
NB7362	Goat IgG - Fc	Rabbit	HRP
NB7359	Goat IgG - Fc	Rabbit	
NB7381	Goat IgG - Fc Cross-adsorbed	Rabbit	FITC
NB7382	Goat IgG - Fc Cross-adsorbed	Rabbit	HRP
NB7380	Goat IgG - Fc Cross-adsorbed	Rabbit	
NB7355	Goat IgG (H and L)	Donkey	AP
NB7349	Goat IgG (H and L)	Rabbit	AP
NB120-6884	Goat IgG (H and L)	Donkey	Biotin
NB7350	Goat IgG (H and L)	Rabbit	Biotin
NB120-6948	Goat IgG (H and L)	Donkey	Cy2
NB120-6949	Goat IgG (H and L)	Donkey	Cy3
NB120-6950	Goat IgG (H and L)	Donkey	Cy3.5
NB120-6951	Goat IgG (H and L)	Donkey	Cy5.5
NB7255	Goat IgG (H and L)	Chicken	FITC
NB7356	Goat IgG (H and L)	Donkey	FITC
NB7351	Goat IgG (H and L)	Rabbit	FITC
NB7256	Goat IgG (H and L)	Chicken	HRP
NB7357	Goat IgG (H and L)	Donkey	HRP
NB7352	Goat IgG (H and L)	Rabbit	HRP
NB710-4105	Goat IgG (H and L)	Donkey	Rhodamine
NB600-1044	Goat IgG (H and L)	Rabbit	Rhodamine
NB120-6883	Goat IgG (H and L)	Donkey	Texas Red
NB120-6739	Goat IgG (H and L)	Rabbit	Texas Red
NB7254	Goat IgG (H and L)	Chicken	
NB7354	Goat IgG (H and L)	Donkey	
NB7540	Goat IgG (H and L)	Rabbit	
NB7348	Goat IgG (H and L)	Rabbit	
NB120-6578	Goat IgG (H and L) - F(ab) Frag.	Donkey	Biotin
NB120-6521	Goat IgG (H and L) - F(ab) Frag.	Donkey	FITC
NB120-6667	Goat IgG (H and L) - F(ab) Frag.	Donkey	HRP
NB120-6522	Goat IgG (H and L) - F(ab) Frag.	Donkey	Rhodamine
NB120-6523	Goat IgG (H and L) - F(ab) Frag.	Donkey	Texas Red
NB120-5756	Goat IgG (H and L) - F(ab)2 Frag.	Rabbit	AP
NB120-5753	Goat IgG (H and L) - F(ab)2 Frag.	Rabbit	Biotin
NB120-5750	Goat IgG (H and L) - F(ab)2 Frag.	Rabbit	FITC
NB120-5755	Goat IgG (H and L) - F(ab)2 Frag.	Rabbit	HRP
NB120-5752	Goat IgG (H and L) - F(ab)2 Frag.	Rabbit	Rhodamine
NB120-5751	Goat IgG (H and L) - F(ab)2 Frag.	Rabbit	Texas Red
NB120-5748	Goat IgG (H and L) - F(ab)2 Frag.	Rabbit	
NB7374	Goat IgG (H and L) Cross-adsorbed	Pig	AP
NB7378	Goat IgG (H and L) Cross-adsorbed	Donkey	FITC
NB7375	Goat IgG (H and L) Cross-adsorbed	Rabbit	FITC
NB7379	Goat IgG (H and L) Cross-adsorbed	Donkey	HRP
NB7376	Goat IgG (H and L) Cross-adsorbed	Rabbit	HRP

Catalog#	Reactivity	Host	Conjugate
NB7377	Goat IgG (H and L) Cross-adsorbed	Donkey	
NB7373	Goat IgG (H and L) Cross-adsorbed	Rabbit	
NB120-7126	Goat IgG (H and L) Pre-adsorbed	Donkey	AP
NB120-7124	Goat IgG (H and L) Pre-adsorbed	Donkey	Biotin
NB120-7131	Goat IgG (H and L) Pre-adsorbed	Rabbit	Biotin
NB120-7122	Goat IgG (H and L) Pre-adsorbed	Donkey	Rhodamine
NB120-7129	Goat IgG (H and L) Pre-adsorbed	Rabbit	Rhodamine
NB120-7123	Goat IgG (H and L) Pre-adsorbed	Donkey	Texas Red
NB120-7130	Goat IgG (H and L) Pre-adsorbed	Rabbit	Texas Red
NB120-6520	Goat IgG Fab Frag.	Donkey	
NB7361	Goat IgG Fc	Rabbit	FITC
NB7365	Goat IgM	Rabbit	AP
NB7366	Goat IgM	Rabbit	FITC
NB7367	Goat IgM	Rabbit	HRP
NB7364	Goat IgM	Rabbit	
NB120-6909	Guinea Pig IgG	Goat	AP
NB120-6772	Guinea Pig IgG	Rabbit	AP
NB120-6905	Guinea Pig IgG	Goat	Rhodamine
NB7403	Guinea Pig IgG - Fc	Goat	HRP
NB7402	Guinea Pig IgG - Fc	Goat	
NB120-6907	Guinea Pig IgG (H and L)	Goat	Biotin
NB120-6770	Guinea Pig IgG (H and L)	Rabbit	Biotin
NB120-6964	Guinea Pig IgG (H and L)	Goat	Cy2
NB710-4179	Guinea Pig IgG (H and L)	Goat	Cy3
NB710-4180	Guinea Pig IgG (H and L)	Goat	Cy3.5
NB120-6567	Guinea Pig IgG (H and L)	Goat	Cy5
NB120-6967	Guinea Pig IgG (H and L)	Goat	Cy5.5
NB7397	Guinea Pig IgG (H and L)	Goat	FITC
NB120-6767	Guinea Pig IgG (H and L)	Rabbit	FITC
NB7398	Guinea Pig IgG (H and L)	Goat	HRP
NB120-6771	Guinea Pig IgG (H and L)	Rabbit	HRP
NB120-6768	Guinea Pig IgG (H and L)	Rabbit	Rhodamine
NB120-6906	Guinea Pig IgG (H and L)	Goat	Texas Red
NB120-6769	Guinea Pig IgG (H and L)	Rabbit	Texas Red
NB7396	Guinea Pig IgG (H and L)	Goat	
NB7400	Guinea Pig IgG (H and L)	Rabbit	
NB120-7138	Guinea Pig IgG (H and L) Pre-adsorbed	Goat	Biotin
NB120-7139	Guinea Pig IgG (H and L) Pre-adsorbed	Goat	HRP
NB120-7136	Guinea Pig IgG (H and L) Pre-adsorbed	Goat	Rhodamine
NB120-7137	Guinea Pig IgG (H and L) Pre-adsorbed	Goat	Texas Red
NB120-7134	Guinea Pig IgG (H and L) Pre-adsorbed	Goat	
NB7604	Guinea Pig IgG Pre-adsorbed	Goat	AP
NB120-7135	Guinea Pig IgG Pre-adsorbed	Goat	FITC
NB7389	Guinea Pig IgG1	Goat	HRP
NB7388	Guinea Pig IgG1	Goat	
NB7393	Guinea Pig IgG2	Goat	HRP
NB7392	Guinea Pig IgG2	Goat	
NB120-5746	Hamster (Armenian) IgG (H and L)	Goat	AP
NB120-5744	Hamster (Armenian) IgG (H and L)	Goat	Biotin
NB710-7845	Hamster (Armenian) IgG (H and L)	Goat	FITC
NB120-5741	Hamster (Armenian) IgG (H and L)	Goat	Rhodamine
NB120-5738	Hamster (Armenian) IgG (H and L)	Goat	
NB120-6782	Hamster (Golden Syrian) IgG	Rabbit	Biotin
NB120-6893	Hamster IgG	Goat	AP
NB120-6784	Hamster IgG	Rabbit	AP

Catalog#	Reactivity	Host	Conjugate
NB120-6891	Hamster IgG (H and L)	Goat	Biotin
NB120-6968	Hamster IgG (H and L)	Goat	Cy2
NB120-6969	Hamster IgG (H and L)	Goat	Cy3
NB120-6970	Hamster IgG (H and L)	Goat	Cy3.5
NB120-6568	Hamster IgG (H and L)	Goat	Cy5
NB120-6971	Hamster IgG (H and L)	Goat	Cy5.5
NB120-6888	Hamster IgG (H and L)	Goat	FITC
NB120-6779	Hamster IgG (H and L)	Rabbit	FITC
NB120-6783	Hamster IgG (H and L)	Rabbit	HRP
NB120-6889	Hamster IgG (H and L)	Goat	Rhodamine
NB120-6780	Hamster IgG (H and L)	Rabbit	Rhodamine
NB120-6890	Hamster IgG (H and L)	Goat	Texas Red
NB120-6781	Hamster IgG (H and L)	Rabbit	Texas Red
NB120-6887	Hamster IgG (H and L)	Goat	
NB120-6699	Hamster IgG (H and L)	Rabbit	
NB120-7145	Hamster IgG (H and L) Pre-adsorbed	Goat	Biotin
NB120-7142	Hamster IgG (H and L) Pre-adsorbed	Goat	FITC
NB120-7146	Hamster IgG (H and L) Pre-adsorbed	Goat	HRP
NB120-7143	Hamster IgG (H and L) Pre-adsorbed	Goat	Rhodamine
NB120-7144	Hamster IgG (H and L) Pre-adsorbed	Goat	Texas Red
NB120-7141	Hamster IgG (H and L) Pre-adsorbed	Goat	
NB120-7147	Hamster IgG Pre-adsorbed	Goat	AP
NB7408	Horse IgA	Goat	Various
NB120-6700	Horse IgG (H and L)	Rabbit	Various
NB7418	Horse IgG (H and L)	Goat	Various
NB7423	Horse IgM	Goat	Various
NB7442	Human IgA	Goat	AP
NB7443	Human IgA	Goat	FITC
NB7444	Human IgA	Goat	HRP
NB120-9151	Human IgA	Chicken	
NB7441	Human IgA	Goat	
NB120-433	Human IgA [hlgA1]	Mouse	
NB7454	Human IgD	Goat	HRP
NB7453	Human IgD	Goat	
NB7457	Human IgE	Goat	AP
NB7458	Human IgE	Goat	FITC
NB7459	Human IgE	Goat	HRP
NB120-9155	Human IgE	Chicken	
NB7456	Human IgE	Goat	
NB7461	Human IgE	Rabbit	
NB120-7426	Human IgE [GE-1]	Mouse	AP
NB120-435	Human IgE [hlgE2]	Mouse	
NB120-434	Human IgE [hlgE1]	Mouse	
NB710-3884	Human IgG	Rabbit	AP
NB710-58352	Human IgG	Chicken	FITC
NB710-57834	Human IgG	Chicken	HRP
NB710-58356	Human IgG	Chicken	
NB7447	Human IgG - Fc	Goat	AP
NB7448	Human IgG - Fc	Goat	FITC
NB7449	Human IgG - Fc	Goat	HRP
NB7446	Human IgG - Fc	Goat	
NB7451	Human IgG - Fc	Rabbit	
NB120-6865	Human IgG (H and L)	Chicken	AP
NB7476	Human IgG (H and L)	Goat	AP
NB120-6871	Human IgG (H and L)	Sheep	AP

Catalog #	Reactivity	Host	Conjugate
NB120-6863	Human IgG (H and L)	Chicken	Biotin
NB120-6857	Human IgG (H and L)	Goat	Biotin
NB120-6758	Human IgG (H and L)	Rabbit	Biotin
NB120-6869	Human IgG (H and L)	Sheep	Biotin
NB120-6956	Human IgG (H and L)	Goat	Cy2
NB120-6957	Human IgG (H and L)	Goat	Cy3
NB120-6958	Human IgG (H and L)	Goat	Cy3.5
NB120-6561	Human IgG (H and L)	Goat	Cy5
NB120-6959	Human IgG (H and L)	Goat	Cy5.5
NB120-6860	Human IgG (H and L)	Chicken	FITC
NB7477	Human IgG (H and L)	Goat	FITC
NB120-6755	Human IgG (H and L)	Rabbit	FITC
NB120-6866	Human IgG (H and L)	Sheep	FITC
NB120-6864	Human IgG (H and L)	Chicken	HRP
NB7478	Human IgG (H and L)	Goat	HRP
NB120-6759	Human IgG (H and L)	Rabbit	HRP
NB120-6870	Human IgG (H and L)	Sheep	HRP
NB120-7005	Human IgG (H and L)	Donkey	PE
NB120-7006	Human IgG (H and L)	Goat	PE
NB120-6861	Human IgG (H and L)	Chicken	Rhodamine
NB120-6855	Human IgG (H and L)	Goat	Rhodamine
NB120-6756	Human IgG (H and L)	Rabbit	Rhodamine
NB120-6867	Human IgG (H and L)	Sheep	Rhodamine
NB120-6862	Human IgG (H and L)	Chicken	Texas Red
NB120-6856	Human IgG (H and L)	Goat	Texas Red
NB120-6757	Human IgG (H and L)	Rabbit	Texas Red
NB120-6868	Human IgG (H and L)	Sheep	Texas Red
NB120-6713	Human IgG (H and L)	Chicken	
NB7475	Human IgG (H and L)	Goat	
NB7473	Human IgG (H and L)	Rabbit	
NB120-6716	Human IgG (H and L)	Sheep	
NB7484	Human IgG (H and L) Cross-adsorbed	Goat	AP
NB7485	Human IgG (H and L) Cross-adsorbed	Goat	FITC
NB7486	Human IgG (H and L) Cross-adsorbed	Goat	HRP
NB7483	Human IgG (H and L) Cross-adsorbed	Goat	
NB7489	Human IgG (H and L) monkey adsorbed	Goat	HRP
NB7488	Human IgG (H and L) monkey adsorbed	Goat	FITC
NB7487	Human IgG (H and L) monkey adsorbed	Goat	
NB120-7154	Human IgG (H and L) Pre-adsorbed	Goat	AP
NB120-7161	Human IgG (H and L) Pre-adsorbed	Rabbit	AP
NB120-7152	Human IgG (H and L) Pre-adsorbed	Goat	Biotin
NB120-7159	Human IgG (H and L) Pre-adsorbed	Rabbit	Biotin
NB120-7156	Human IgG (H and L) Pre-adsorbed	Rabbit	FITC
NB120-7160	Human IgG (H and L) Pre-adsorbed	Rabbit	HRP
NB120-7150	Human IgG (H and L) Pre-adsorbed	Goat	Rhodamine
NB120-7157	Human IgG (H and L) Pre-adsorbed	Rabbit	Rhodamine
NB120-7151	Human IgG (H and L) Pre-adsorbed	Goat	Texas Red
NB120-7158	Human IgG (H and L) Pre-adsorbed	Rabbit	Texas Red
NB120-7155	Human IgG (H and L) Pre-adsorbed	Rabbit	
NB120-9243	Human IgG (heavy chain specific) [Mp 4H2]	Mouse	
NB120-436	Human IgG [hIgG1]	Mouse	
NB7437	Human IgM	Goat	AP
NB7438	Human IgM	Goat	FITC
NB7439	Human IgM	Goat	HRP
NB120-9156	Human IgM	Chicken	

Catalog #	Reactivity	Host	Conjugate
NB7436	Human IgM	Goat	
NB120-9169	Human IgM	Rabbit	
NB120-9176	Human IgM	Sheep	
NB7480	Human Kappa Free Light Chain	Goat	
NB7463	Human Kappa Light Chain	Goat	
NB7464	Human Kappa Light Chain B and F	Goat	AP
NB7465	Human Kappa Light Chain B and F	Goat	FITC
NB7466	Human Kappa Light Chain B and F	Goat	HRP
NB7482	Human Lambda Free Light Chain	Sheep	
NB7469	Human Lambda Light Chain B and F	Goat	AP
NB7470	Human Lambda Light Chain B and F	Goat	FITC
NB7471	Human Lambda Light Chain B and F	Goat	HRP
NB7468	Human Lambda Light Chain B and F	Goat	
	Llama IgG: See Website		
NB7235	Macaw IgG (H and L)	Goat	
NB7213	Monkey IgG (H and L)	Goat	AP
NB7214	Monkey IgG (H and L)	Goat	FITC
NB7215	Monkey IgG (H and L)	Goat	HRP
NB7212	Monkey IgG (H and L)	Goat	
NB7502	Mouse IgA	Goat	AP
NB7503	Mouse IgA	Goat	FITC
NB7504	Mouse IgA	Goat	HRP
NB7501	Mouse IgA	Goat	
NB7506	Mouse IgA	Rabbit	
NB7531	Mouse IgE	Goat	AP
NB7532	Mouse IgE	Goat	FITC
NB7533	Mouse IgE	Goat	HRP
NB7530	Mouse IgE	Goat	
NB720-AP	Mouse IgG	Rabbit	AP
NB720-B	Mouse IgG	Rabbit	Biotin
NB710-58351	Mouse IgG	Chicken	FITC
NB720-F	Mouse IgG	Goat	FITC
NB710-57831	Mouse IgG	Chicken	HRP
NB720-H	Mouse IgG	Rabbit	HRP
NB7594	Mouse IgG	Goat	PE
NB710-58355	Mouse IgG	Chicken	
NB120-5888	Mouse IgG - F(ab)2 Frag.	Goat	AP
NB120-5871	Mouse IgG - F(ab)2 Frag.	Goat	AP
NB120-5886	Mouse IgG - F(ab)2 Frag.	Goat	Biotin
NB710-7817	Mouse IgG - F(ab)2 Frag.	Goat	FITC
NB120-5887	Mouse IgG - F(ab)2 Frag.	Goat	HRP
NB120-5879	Mouse IgG - F(ab)2 Frag.	Goat	HRP
NB120-5889	Mouse IgG - F(ab)2 Frag.	Goat	PE
NB120-7000	Mouse IgG - F(ab)2 Frag.	Rabbit	PE
NB120-5885	Mouse IgG - F(ab)2 Frag.	Goat	Rhodamine
NB7586	Mouse IgG - F(ab)2 Frag.	Goat	Texas Red
NB120-5882	Mouse IgG - F(ab)2 Frag.	Goat	
NB120-6823	Mouse IgG - Fab Frag.	Goat	HRP
NB7559	Mouse IgG - Fc	Goat	AP
NB7560	Mouse IgG - Fc	Goat	FITC
NB7561	Mouse IgG - Fc	Goat	HRP
NB7558	Mouse IgG - Fc	Goat	
NB7556	Mouse IgG - Fc	Rabbit	
NB120-7018	Mouse IgG (H and L)	Goat	Agarose Immobilized
NB120-6815	Mouse IgG (H and L)	Chicken	AP

Catalog #	Reactivity	Host	Conjugate
NB120-6821	Mouse IgG (H and L)	Donkey	AP
NB7536	Mouse IgG (H and L)	Goat	AP
NB7542	Mouse IgG (H and L)	Rabbit	AP
NB120-6809	Mouse IgG (H and L)	Sheep	AP
NB120-6813	Mouse IgG (H and L)	Chicken	Biotin
NB120-6819	Mouse IgG (H and L)	Donkey	Biotin
NB7537	Mouse IgG (H and L)	Goat	Biotin
NB120-6727	Mouse IgG (H and L)	Rabbit	Biotin
NB120-6807	Mouse IgG (H and L)	Sheep	Biotin
NB120-6944	Mouse IgG (H and L)	Goat	Cy2
NB7607	Mouse IgG (H and L)	Goat	Cy3
NB120-6946	Mouse IgG (H and L)	Goat	Cy3.5
NB7602	Mouse IgG (H and L)	Goat	Cy5
NB710-4161	Mouse IgG (H and L)	Goat	Cy5.5
NB120-6810	Mouse IgG (H and L)	Chicken	FITC
NB120-7057	Mouse IgG (H and L)	Donkey	FITC
NB120-6816	Mouse IgG (H and L)	Donkey	FITC
NB7538	Mouse IgG (H and L)	Goat	FITC
NB7543	Mouse IgG (H and L)	Rabbit	FITC
NB120-6804	Mouse IgG (H and L)	Sheep	FITC
NB120-6814	Mouse IgG (H and L)	Chicken	HRP
NB120-6820	Mouse IgG (H and L)	Donkey	HRP
NB7539	Mouse IgG (H and L)	Goat	HRP
NB7544	Mouse IgG (H and L)	Rabbit	HRP
NB120-6808	Mouse IgG (H and L)	Sheep	HRP
NB7576	Mouse IgG (H and L)	Chicken	Rhodamine
NB120-6817	Mouse IgG (H and L)	Donkey	Rhodamine
NB120-6786	Mouse IgG (H and L)	Goat	Rhodamine
NB120-6725	Mouse IgG (H and L)	Rabbit	Rhodamine
NB120-6805	Mouse IgG (H and L)	Sheep	Rhodamine
NB7598	Mouse IgG (H and L)	Chicken	Texas Red
NB7600	Mouse IgG (H and L)	Donkey	Texas Red
NB120-6787	Mouse IgG (H and L)	Goat	Texas Red
NB7585	Mouse IgG (H and L)	Rabbit	Texas Red
NB120-6806	Mouse IgG (H and L)	Sheep	Texas Red
NB7593	Mouse IgG (H and L)	Chicken	
NB120-6707	Mouse IgG (H and L)	Donkey	
NB710-40671	Mouse IgG (H and L)	Goat	HiLyte Flour 488
NB710-40672	Mouse IgG (H and L)	Goat	HiLyte Flour 555
NB710-40673	Mouse IgG (H and L)	Goat	HiLyte Flour 647
NB710-40674	Mouse IgG (H and L)	Goat	HiLyte Flour 680
NB710-40675	Mouse IgG (H and L)	Goat	HiLyte Flour 750
NB7535	Mouse IgG (H and L)	Goat	
NB7541	Mouse IgG (H and L)	Rabbit	
NB120-6710	Mouse IgG (H and L)	Sheep	
NB120-5763	Mouse IgG (H and L) - F(ab)2 Frag.	Rabbit	AP
NB120-5868	Mouse IgG (H and L) - F(ab)2 Frag.	Goat	Biotin
NB120-5761	Mouse IgG (H and L) - F(ab)2 Frag.	Rabbit	Biotin
NB7583	Mouse IgG (H and L) - F(ab)2 Frag.	Goat	FITC
NB120-5758	Mouse IgG (H and L) - F(ab)2 Frag.	Rabbit	FITC
NB120-5870	Mouse IgG (H and L) - F(ab)2 Frag.	Goat	HRP
NB120-5762	Mouse IgG (H and L) - F(ab)2 Frag.	Rabbit	HRP
NB120-5867	Mouse IgG (H and L) - F(ab)2 Frag.	Goat	Rhodamine
NB120-5760	Mouse IgG (H and L) - F(ab)2 Frag.	Rabbit	Rhodamine
NB120-5766	Mouse IgG (H and L) - F(ab)2 Frag.	Goat	Texas Red

Catalog #	Reactivity	Host	Conjugate
NB120-5759	Mouse IgG (H and L) - F(ab)2 Frag.	Rabbit	Texas Red
NB7588	Mouse IgG (H and L) - F(ab)2 Frag.	Goat	
NB120-5757	Mouse IgG (H and L) - F(ab)2 Frag.	Rabbit	
NB120-6822	Mouse IgG (H and L) - Fab Frag.	Goat	Biotin
NB120-6669	Mouse IgG (H and L) - Fab Frag.	Goat	FITC
NB120-6670	Mouse IgG (H and L) - Fab Frag.	Goat	Rhodamine
NB120-6723	Mouse IgG (H and L) - Fab Frag.	Goat	Texas Red
NB7568	Mouse IgG (H and L) Cross-adsorbed	Goat	AP
NB7569	Mouse IgG (H and L) Cross-adsorbed	Goat	FITC
NB7570	Mouse IgG (H and L) Cross-adsorbed	Goat	HRP
NB7574	Mouse IgG (H and L) Cross-adsorbed	Goat	HRP
NB7572	Mouse IgG (H and L) Cross-adsorbed	Rabbit	HRP
NB7567	Mouse IgG (H and L) Cross-adsorbed	Goat	
NB7573	Mouse IgG (H and L) Cross-adsorbed	Goat	
NB7571	Mouse IgG (H and L) Cross-adsorbed	Rabbit	
NB7596	Mouse IgG (H and L) F2 Frag.	Donkey	PE
NB120-7062	Mouse IgG (H and L) Pre-adsorbed	Donkey	AP
NB120-7077	Mouse IgG (H and L) Pre-adsorbed	Rabbit	AP
NB120-7060	Mouse IgG (H and L) Pre-adsorbed	Donkey	Biotin
NB7605	Mouse IgG (H and L) Pre-adsorbed	Goat	Biotin
NB120-7074	Mouse IgG (H and L) Pre-adsorbed	Rabbit	Biotin
NB120-7071	Mouse IgG (H and L) Pre-adsorbed	Rabbit	FITC
NB120-7061	Mouse IgG (H and L) Pre-adsorbed	Donkey	HRP
NB120-7058	Mouse IgG (H and L) Pre-adsorbed	Donkey	Rhodamine
NB120-7065	Mouse IgG (H and L) Pre-adsorbed	Goat	Rhodamine
NB120-7072	Mouse IgG (H and L) Pre-adsorbed	Rabbit	Rhodamine
NB120-7059	Mouse IgG (H and L) Pre-adsorbed	Donkey	Texas Red
NB120-7066	Mouse IgG (H and L) Pre-adsorbed	Goat	Texas Red
NB120-7073	Mouse IgG (H and L) Pre-adsorbed	Rabbit	Texas Red
NB120-7056	Mouse IgG (H and L) Pre-adsorbed	Donkey	
NB120-7063	Mouse IgG (H and L) Pre-adsorbed	Goat	
PAB0096	Mouse IgG (H&L)	Goat	HRP
NB120-5880	Mouse IgG F(c) - F(ab)2 Frag.	Goat	AP
NB120-5877	Mouse IgG F(c) - F(ab)2 Frag.	Goat	Biotin
NB120-5881	Mouse IgG F(c) - F(ab)2 Frag.	Goat	PE
NB120-5876	Mouse IgG F(c) - F(ab)2 Frag.	Goat	Rhodamine
NB120-5872	Mouse IgG F(c) - F(ab)2 Frag.	Goat	
NB120-6007	Mouse IgG + IgM + IgA (H and L) - F(ab)2 Frag.	Goat	AP
NB120-6005	Mouse IgG + IgM + IgA (H and L) - F(ab)2 Frag.	Goat	Biotin
NB120-5999	Mouse IgG + IgM + IgA (H and L) - F(ab)2 Frag.	Goat	FITC
NB120-6006	Mouse IgG + IgM + IgA (H and L) - F(ab)2 Frag.	Goat	HRP
NB120-6004	Mouse IgG + IgM + IgA (H and L) - F(ab)2 Frag.	Goat	Rhodamine
NB120-6003	Mouse IgG + IgM + IgA (H and L) - F(ab)2 Frag.	Goat	Texas Red
NB120-5998	Mouse IgG + IgM + IgA (H and L) - F(ab)2 Frag.	Goat	
NB7509	Mouse IgG1	Goat	AP
NB7510	Mouse IgG1	Goat	FITC
NB7511	Mouse IgG1	Goat	HRP
NB7508	Mouse IgG1	Goat	
NB120-9172	Mouse IgG1	Rabbit	
NB7514	Mouse IgG2a	Goat	AP
NB7515	Mouse IgG2a	Goat	FITC
NB7516	Mouse IgG2a	Goat	HRP
NB120-9163	Mouse IgG2a	Goat	
NB120-9173	Mouse IgG2a	Rabbit	
NB7513	Mouse IgG2a Heavy chain specific	Goat	

Catalog #	Reactivity	Host	Conjugate
NB600-1064	Mouse IgG2a Heavy chain, (LO-MG2a-7)	Rat	Biotin
NB7519	Mouse IgG2b	Goat	AP
NB7520	Mouse IgG2b	Goat	FITC
NB7521	Mouse IgG2b	Goat	HRP
NB7518	Mouse IgG2b	Goat	
NB120-9171	Mouse IgG2b	Rabbit	
NB7564	Mouse IgG2c	Goat	AP
NB7565	Mouse IgG2c	Goat	FITC
NB7566	Mouse IgG2c	Goat	HRP
NB7563	Mouse IgG2c	Goat	
NB7524	Mouse IgG3	Goat	AP
NB7525	Mouse IgG3	Goat	FITC
NB7526	Mouse IgG3	Goat	HRP
NB7523	Mouse IgG3	Goat	
NB120-9174	Mouse IgG3	Rabbit	
NB7495	Mouse IgM	Goat	AP
NB7496	Mouse IgM	Goat	FITC
NB7497	Mouse IgM	Goat	HRP
NB7494	Mouse IgM	Goat	
NB7499	Mouse IgM	Rabbit	
NB120-5931	Mouse IgM mu - F(ab)2 Frag.	Goat	AP
NB120-5929	Mouse IgM mu - F(ab)2 Frag.	Goat	Biotin
NB7580	Mouse IgM mu - F(ab)2 Frag.	Goat	FITC
NB120-5930	Mouse IgM mu - F(ab)2 Frag.	Goat	HRP
NB120-5932	Mouse IgM mu - F(ab)2 Frag.	Goat	PE
NB120-5928	Mouse IgM mu - F(ab)2 Frag.	Goat	Rhodamine
NB120-5925	Mouse IgM mu - F(ab)2 Frag.	Goat	
NB7547	Mouse Kappa Light Chain	Goat	AP
NB7548	Mouse Kappa Light Chain	Goat	FITC
NB7549	Mouse Kappa Light Chain	Goat	HRP
NB7546	Mouse Kappa Light Chain	Goat	
NB7551	Mouse Lambda Light Chain	Goat	FITC
NB7552	Mouse Lambda Light Chain	Goat	HRP
NB7550	Mouse Lambda Light Chain	Goat	
NB7230	Opossum IgG (H and L)	Rabbit	
	Pig IgA, IgG, IgM: See Website		
NB7167	Rabbit IgA	Goat	AP
NB7168	Rabbit IgA	Goat	FITC
NB7169	Rabbit IgA	Goat	HRP
NB7166	Rabbit IgA	Goat	
NB120-2758	Rabbit IgA Pre-adsorbed	Goat	
NB120-6830	Rabbit IgG	Chicken	AP
NB120-6803	Rabbit IgG	Donkey	AP
NB730-AP	Rabbit IgG	Goat	AP
NB730-B	Rabbit IgG	Goat	Biotin
NB120-6564	Rabbit IgG	Goat	Cy5
NB710-58350	Rabbit IgG	Chicken	FITC
NB710-58354	Rabbit IgG	Chicken	FITC
NB120-6009	Rabbit IgG	Goat	FITC
NB730-F	Rabbit IgG	Goat	FITC
NB710-57836	Rabbit IgG	Chicken	HRP
NB120-16284	Rabbit IgG	Donkey	HRP
NB730-H	Rabbit IgG	Goat	HRP
NB7581	Rabbit IgG	Donkey	PE
NB7177	Rabbit IgG - Fc	Goat	AP

Catalog #	Reactivity	Host	Conjugate
NB7178	Rabbit IgG - Fc	Goat	FITC
NB7179	Rabbit IgG - Fc	Goat	HRP
NB7176	Rabbit IgG - Fc	Goat	
NB120-7019	Rabbit IgG (H and L)	Goat	Agarose Immobilized
NB7157	Rabbit IgG (H and L)	Goat	AP
NB120-6796	Rabbit IgG (H and L)	Sheep	AP
NB120-6828	Rabbit IgG (H and L)	Chicken	Biotin
NB120-6801	Rabbit IgG (H and L)	Donkey	Biotin
NB7158	Rabbit IgG (H and L)	Goat	Biotin
NB120-6794	Rabbit IgG (H and L)	Sheep	Biotin
NB120-6940	Rabbit IgG (H and L)	Goat	Cy2
NB120-6939	Rabbit IgG (H and L)	Goat	Cy3
NB120-6941	Rabbit IgG (H and L)	Goat	Cy3.5
NB120-6942	Rabbit IgG (H and L)	Goat	Cy5.5
NB7252	Rabbit IgG (H and L)	Chicken	FITC
NB120-6798	Rabbit IgG (H and L)	Donkey	FITC
NB7159	Rabbit IgG (H and L)	Goat	FITC
NB120-6791	Rabbit IgG (H and L)	Sheep	FITC
NB7253	Rabbit IgG (H and L)	Chicken	HRP
NB7160	Rabbit IgG (H and L)	Goat	HRP
NB120-6795	Rabbit IgG (H and L)	Sheep	HRP
NB120-6826	Rabbit IgG (H and L)	Chicken	Rhodamine
NB120-6799	Rabbit IgG (H and L)	Donkey	Rhodamine
NB7575	Rabbit IgG (H and L)	Goat	Rhodamine
NB120-6792	Rabbit IgG (H and L)	Sheep	Rhodamine
NB7599	Rabbit IgG (H and L)	Chicken	Texas Red
NB7609	Rabbit IgG (H and L)	Donkey	Texas Red
NB120-6719	Rabbit IgG (H and L)	Goat	Texas Red
NB120-6793	Rabbit IgG (H and L)	Sheep	Texas Red
NB7162	Rabbit IgG (H and L)	Bovine	
NB7251	Rabbit IgG (H and L)	Chicken	
NB7164	Rabbit IgG (H and L)	Donkey	
NB7156	Rabbit IgG (H and L)	Goat	
NB7154	Rabbit IgG (H and L)	Sheep	
NB120-6015	Rabbit IgG (H and L) - F2 Frag.	Goat	AP
NB120-6012	Rabbit IgG (H and L) - F2 Frag.	Goat	Biotin
NB120-6013	Rabbit IgG (H and L) - F2 Frag.	Goat	HRP
NB120-6011	Rabbit IgG (H and L) - F2 Frag.	Goat	Rhodamine
NB120-6010	Rabbit IgG (H and L) - F2 Frag.	Goat	Texas Red
NB120-6008	Rabbit IgG (H and L) - F2 Frag.	Goat	
NB120-6824	Rabbit IgG (H and L) - Fab	Goat	
NB120-7050	Rabbit IgG (H and L) - Fab Frag	Goat	FITC
NB120-7055	Rabbit IgG (H and L) - Fab Frag.	Goat	Biotin
NB120-7171	Rabbit IgG (H and L) - Fab Frag.	Goat	HRP
NB120-7051	Rabbit IgG (H and L) - Fab Frag.	Goat	Rhodamine
NB120-7052	Rabbit IgG (H and L) - Fab Frag.	Goat	Texas Red
NB7181	Rabbit IgG (H and L) cross adsorbed	Goat	AP
NB7182	Rabbit IgG (H and L) Cross-adsorbed	Goat	FITC
NB7185	Rabbit IgG (H and L) Cross-adsorbed	Donkey	HRP
NB7183	Rabbit IgG (H and L) Cross-adsorbed	Goat	HRP
NB7187	Rabbit IgG (H and L) Cross-adsorbed	Goat	HRP
NB7184	Rabbit IgG (H and L) Cross-adsorbed	Donkey	
NB7180	Rabbit IgG (H and L) Cross-adsorbed	Goat	
NB7186	Rabbit IgG (H and L) Cross-adsorbed	Goat	
NB120-7082	Rabbit IgG (H and L) Pre-adsorbed	Donkey	Biotin

Catalog #	Reactivity	Host	Conjugate
NB120-7079	Rabbit IgG (H and L) Pre-absorbed	Donkey	FITC
NB120-7080	Rabbit IgG (H and L) Pre-absorbed	Donkey	Rhodamine
NB120-7087	Rabbit IgG (H and L) Pre-absorbed	Goat	Rhodamine
NB120-7088	Rabbit IgG (H and L) Pre-absorbed	Goat	Texas Red
NB120-6113	Rabbit IgG F(ab)2 Frag.	Goat	AP
NB120-6024	Rabbit IgG F(ab)2 Frag.	Goat	AP
NB120-6111	Rabbit IgG F(ab)2 Frag.	Goat	Biotin
NB120-6108	Rabbit IgG F(ab)2 Frag.	Goat	FITC
NB120-6023	Rabbit IgG F(ab)2 Frag.	Goat	HRP
NB120-6110	Rabbit IgG F(ab)2 Frag.	Goat	Rhodamine
NB120-6109	Rabbit IgG F(ab)2 Frag.	Goat	Texas Red
NB120-6107	Rabbit IgG F(ab)2 Frag.	Goat	
NB120-6021	Rabbit IgG F(c) - F(ab)2 Frag.	Goat	Biotin
NB120-6018	Rabbit IgG F(c) - F(ab)2 Frag.	Goat	FITC
NB120-6020	Rabbit IgG F(c) - F(ab)2 Frag.	Goat	Rhodamine
NB120-6019	Rabbit IgG F(c) - F(ab)2 Frag.	Goat	Texas Red
NB120-6016	Rabbit IgG F(c) - F(ab)2 Frag.	Goat	
NB120-7084	Rabbit IgG Pre-absorbed	Donkey	AP
NB7172	Rabbit IgM	Goat	AP
NB7173	Rabbit IgM	Goat	FITC
NB7174	Rabbit IgM	Goat	HRP
NB7171	Rabbit IgM	Goat	
NB7108	Rat IgA	Goat	AP
NB7109	Rat IgA	Goat	FITC
NB7110	Rat IgA	Goat	HRP
NB7107	Rat IgA	Goat	
NB600-758	Rat IgA Heavy chain (MARA-1)	Mouse	FITC
NB7139	Rat IgE	Sheep	FITC
NB7140	Rat IgE	Sheep	HRP
NB7138	Rat IgE	Sheep	
NB600-757	Rat IgE (MARE-1)	Mouse	FITC
NB7610	Rat IgG	Goat	Cy5
NB7150	Rat IgG - Fc	Goat	AP
NB7146	Rat IgG - Fc	Rabbit	AP
NB7151	Rat IgG - Fc	Goat	FITC
NB7152	Rat IgG - Fc	Goat	HRP
NB7149	Rat IgG - Fc	Goat	
NB7145	Rat IgG - Fc	Rabbit	
NB120-6837	Rat IgG (H and L)	Chicken	AP
NB7113	Rat IgG (H and L)	Goat	AP
NB120-6735	Rat IgG (H and L)	Rabbit	AP
NB120-6853	Rat IgG (H and L)	Sheep	AP
NB120-6835	Rat IgG (H and L)	Chicken	Biotin
NB120-6844	Rat IgG (H and L)	Goat	Biotin
NB120-6733	Rat IgG (H and L)	Rabbit	Biotin
NB120-6851	Rat IgG (H and L)	Sheep	Biotin
NB120-6952	Rat IgG (H and L)	Goat	Cy2
NB7597	Rat IgG (H and L)	Goat	Cy3
NB120-6954	Rat IgG (H and L)	Goat	Cy3.5
NB120-6955	Rat IgG (H and L)	Goat	Cy5.5
NB120-6832	Rat IgG (H and L)	Chicken	FITC
NB7114	Rat IgG (H and L)	Goat	FITC
NB7578	Rat IgG (H and L)	Rabbit	FITC
NB120-6848	Rat IgG (H and L)	Sheep	FITC
NB120-6836	Rat IgG (H and L)	Chicken	HRP

Catalog #	Reactivity	Host	Conjugate
NB7115	Rat IgG (H and L)	Goat	HRP
NB7592	Rat IgG (H and L)	Rabbit	HRP
NB120-6852	Rat IgG (H and L)	Sheep	HRP
NB120-7008	Rat IgG (H and L)	Donkey	PE
NB7589	Rat IgG (H and L)	Goat	PE
NB120-6833	Rat IgG (H and L)	Chicken	Rhodamine
NB120-6841	Rat IgG (H and L)	Goat	Rhodamine
NB120-6731	Rat IgG (H and L)	Rabbit	Rhodamine
NB120-6849	Rat IgG (H and L)	Sheep	Rhodamine
NB120-6834	Rat IgG (H and L)	Chicken	Texas Red
NB120-6843	Rat IgG (H and L)	Goat	Texas Red
NB120-6732	Rat IgG (H and L)	Rabbit	Texas Red
NB120-6850	Rat IgG (H and L)	Sheep	Texas Red
NB120-6838	Rat IgG (H and L)	Chicken	
NB7112	Rat IgG (H and L)	Goat	
NB7143	Rat IgG (H and L)	Rabbit	
NB120-6847	Rat IgG (H and L)	Sheep	
NB120-6251	Rat IgG (H and L) - F(ab)2 Frag.	Rabbit	AP
NB120-6119	Rat IgG (H and L) - F(ab)2 Frag.	Goat	Biotin
NB120-6249	Rat IgG (H and L) - F(ab)2 Frag.	Rabbit	Biotin
NB120-6115	Rat IgG (H and L) - F(ab)2 Frag.	Goat	FITC
NB120-6246	Rat IgG (H and L) - F(ab)2 Frag.	Rabbit	FITC
NB120-6120	Rat IgG (H and L) - F(ab)2 Frag.	Goat	HRP
NB120-6250	Rat IgG (H and L) - F(ab)2 Frag.	Rabbit	HRP
NB120-6118	Rat IgG (H and L) - F(ab)2 Frag.	Goat	Rhodamine
NB120-6248	Rat IgG (H and L) - F(ab)2 Frag.	Rabbit	Rhodamine
NB120-6117	Rat IgG (H and L) - F(ab)2 Frag.	Goat	Texas Red
NB120-6247	Rat IgG (H and L) - F(ab)2 Frag.	Rabbit	Texas Red
NB120-6114	Rat IgG (H and L) - F(ab)2 Frag.	Goat	
NB120-6116	Rat IgG (H and L) - F(ab)2 Frag.	Rabbit	
NB120-7176	Rat IgG (H and L) - Fab Frag.	Goat	Biotin
NB120-7173	Rat IgG (H and L) - Fab Frag.	Goat	FITC
NB120-7177	Rat IgG (H and L) - Fab Frag.	Goat	HRP
NB120-7174	Rat IgG (H and L) - Fab Frag.	Goat	Rhodamine
NB120-7175	Rat IgG (H and L) - Fab Frag.	Goat	Texas Red
NB120-7172	Rat IgG (H and L) - Fab Frag.	Goat	
NB7601	Rat IgG (H and L) Pre-absorbed	Goat	AP
NB120-7105	Rat IgG (H and L) Pre-absorbed	Rabbit	AP
NB120-7096	Rat IgG (H and L) Pre-absorbed	Goat	Biotin
NB120-7103	Rat IgG (H and L) Pre-absorbed	Rabbit	Biotin
NB120-7093	Rat IgG (H and L) Pre-absorbed	Goat	FITC
NB120-7100	Rat IgG (H and L) Pre-absorbed	Rabbit	FITC
NB710-4240	Rat IgG (H and L) Pre-absorbed	Goat	HRP
NB120-7104	Rat IgG (H and L) Pre-absorbed	Rabbit	HRP
NB120-7094	Rat IgG (H and L) Pre-absorbed	Goat	Rhodamine
NB120-7101	Rat IgG (H and L) Pre-absorbed	Rabbit	Rhodamine
NB120-7095	Rat IgG (H and L) Pre-absorbed	Goat	Texas Red
NB120-7102	Rat IgG (H and L) Pre-absorbed	Rabbit	Texas Red
NB120-7092	Rat IgG (H and L) Pre-absorbed	Goat	
NB120-7099	Rat IgG (H and L) Pre-absorbed	Rabbit	
NB120-6518	Rat IgG F(ab)2 Frag.	Goat	AP
NB120-6121	Rat IgG F(ab)2 Frag.	Goat	AP
NB120-6275	Rat IgG F(ab)2 Frag.	Goat	Biotin
NB120-6266	Rat IgG F(ab)2 Frag.	Goat	FITC
NB120-6517	Rat IgG F(ab)2 Frag.	Goat	HRP

Catalog #	Reactivity	Host	Conjugate
B120-6519	Rat IgG F(ab)2 Frag.	Goat	PE
NB120-6270	Rat IgG F(ab)2 Frag.	Goat	Rhodamine
NB120-6267	Rat IgG F(ab)2 Frag.	Goat	Texas Red
NB120-6265	Rat IgG F(ab)2 Frag.	Goat	
NB120-6258	Rat IgG F(c) - F(ab)2 Frag.	Goat	AP
NB120-6256	Rat IgG F(c) - F(ab)2 Frag.	Goat	Biotin
NB120-6253	Rat IgG F(c) - F(ab)2 Frag.	Goat	FITC
NB120-6257	Rat IgG F(c) - F(ab)2 Frag.	Goat	HRP
NB120-6259	Rat IgG F(c) - F(ab)2 Frag.	Goat	PE
NB120-6255	Rat IgG F(c) - F(ab)2 Frag.	Goat	Rhodamine
NB120-6254	Rat IgG F(c) - F(ab)2 Frag.	Goat	Texas Red
NB120-6252	Rat IgG F(c) - F(ab)2 Frag.	Goat	
NB7147	Rat IgG Fc	Rabbit	FITC
NB7148	Rat IgG Fc	Rabbit	HRP
NB7118	Rat IgG1	Goat	AP
NB7119	Rat IgG1	Goat	FITC
NB7120	Rat IgG1	Goat	HRP
NB7117	Rat IgG1	Goat	
NB7123	Rat IgG2a	Goat	AP
NB7124	Rat IgG2a	Goat	FITC
NB7126	Rat IgG2a	Goat	HRP
NB7122	Rat IgG2a	Goat	
NB710-14382	Rat IgG2a, kappa, (RTK2758)	Rat	FITC
NB7128	Rat IgG2b	Goat	AP
NB7129	Rat IgG2b	Goat	FITC
NB7130	Rat IgG2b	Goat	HRP
NB7127	Rat IgG2b	Goat	
NB7133	Rat IgG2c	Goat	AP
NB7134	Rat IgG2c	Goat	FITC
NB7135	Rat IgG2c	Goat	HRP
NB7132	Rat IgG2c	Goat	
NB7101	Rat IgM	Goat	AP
NB7102	Rat IgM	Goat	FITC
NB7103	Rat IgM	Goat	HRP

Catalog #	Reactivity	Host	Conjugate
NB7100	Rat IgM	Goat	
NB7105	Rat IgM	Rabbit	
NB600-759	Rat IgM [MARM-4]	Mouse	FITC
NB7201	Sheep IgA	Rabbit	AP
NB7202	Sheep IgA	Rabbit	FITC
NB7203	Sheep IgA	Rabbit	HRP
NB7200	Sheep IgA	Rabbit	
NB740-F	Sheep IgG	Donkey	FITC
NB740-H	Sheep IgG	Donkey	HRP
NB120-6901	Sheep IgG (H and L)	Donkey	AP
NB7193	Sheep IgG (H and L)	Rabbit	AP
NB120-6899	Sheep IgG (H and L)	Donkey	Biotin
NB120-6746	Sheep IgG (H and L)	Rabbit	Biotin
NB120-6896	Sheep IgG (H and L)	Donkey	FITC
NB7194	Sheep IgG (H and L)	Rabbit	FITC
NB7190	Sheep IgG (H and L)	Donkey	HRP
NB7195	Sheep IgG (H and L)	Rabbit	HRP
NB120-7009	Sheep IgG (H and L)	Donkey	PE
NB120-6897	Sheep IgG (H and L)	Donkey	Rhodamine
NB120-6744	Sheep IgG (H and L)	Rabbit	Rhodamine
NB7582	Sheep IgG (H and L)	Donkey	Texas Red
NB120-6745	Sheep IgG (H and L)	Rabbit	Texas Red
NB7189	Sheep IgG (H and L)	Donkey	
NB7192	Sheep IgG (H and L)	Rabbit	
NB120-7112	Sheep IgG (H and L) Pre-absorbed	Rabbit	AP
NB7584	Sheep IgG (H and L) Pre-absorbed	Rabbit	Biotin
NB120-7107	Sheep IgG (H and L) Pre-absorbed	Rabbit	FITC
NB120-7111	Sheep IgG (H and L) Pre-absorbed	Rabbit	HRP
NB120-7108	Sheep IgG (H and L) Pre-absorbed	Rabbit	Rhodamine
NB120-7109	Sheep IgG (H and L) Pre-absorbed	Rabbit	Texas Red
NB120-7106	Sheep IgG (H and L) Pre-absorbed	Rabbit	
NB7206	Sheep IgM	Rabbit	AP
NB7207	Sheep IgM	Rabbit	FITC
NB7208	Sheep IgM	Rabbit	HRP
NB7205	Sheep IgM	Rabbit	

Isotype Controls

Catalog #	Description
NB120-18480	Armenian Hamster IgG (HTK204), Biotin
NB120-18479	Armenian Hamster IgG (HTK888)
NB120-18473	Armenian Hamster IgG (HTK888), FITC
NB120-18475	Armenian Hamster IgG (HTK888), PE
NB120-18476	Armenian Hamster IgG (HTK888), PE/Cy5
NB120-18477	Armenian Hamster IgG (HTK888), PE/Cy5.5
NB120-18478	Armenian Hamster IgG (HTK888), PE/Cy7
NB120-18472	Armenian Hamster IgG (HTK888), Biotin
NB120-18483	Armenian Hamster IgM (HTK204)
NB120-18482	Armenian Hamster IgM (HTK204) BSA/Azide free
NB120-18481	Armenian Hamster IgM (HTK204), FITC
NB500-566	Mouse IgG2b (PLRV219)
NB120-18441	Mouse IgG1 kappa (MOPC-21), PE/Cy7
NB120-18470	Mouse IgG2a (MOPC-173), PE
NB600-986	Mouse IgG2a kappa (MG2a-53)

Catalog #	Description
NB120-18452	Mouse IgG2a kappa (MOPC-173), APC/Cy5.5
NB120-18453	Mouse IgG2a kappa (MOPC-173), APC/Cy7
NB120-18454	Mouse IgG2a kappa (MOPC-173), Biotin
NB500-567	Mouse IgG2b (PLRV219), APC
NB500-568	Mouse IgG2b (PLRV219), Biotin
NB500-569	Mouse IgG2b (PLRV219)
NB500-570	Mouse IgG2b (PLRV219), FITC
NB120-18421	Mouse IgG2b kappa (MG2b-57)
NB120-18423	Mouse IgG2b kappa (MG2b-57), APC
NB120-18425	Mouse IgG2b kappa (MG2b-57), Biotin
NB120-18427	Mouse IgG2b kappa (MG2b-57), FITC
NB120-18436	Mouse IgG3 kappa (MG3-35), Biotin
NB120-18403	Rat IgG1 kappa (RTK2071), Biotin
NB120-18410	Rat IgG1 kappa (RTK2071), PE/Cy5
NB120-18411	Rat IgG1 kappa (RTK2071), PE/Cy7
NB120-18442	Rat IgG2a kappa (RTK2758), APC

Catalog #	Description
NB120-18444	Rat IgG2a kappa (RTK2758), APC/Cy5
NB120-18439	Rat IgG2a kappa (RTK2758), APC/Cy7
NB120-18445	Rat IgG2a kappa (RTK2758), Biotin
NB120-18545	Rat IgG2b kappa (RTK2758), PE
NB120-18541	Rat IgG2b kappa (RTK4530)
NB120-18535	Rat IgG2b kappa (RTK4530), APC
NB120-18542	Rat IgG2b kappa (RTK4530), Biotin
NB120-18537	Rat IgG2b kappa (RTK4530), PE
NB120-18538	Rat IgG2b kappa (RTK4530), PE/Cy5
NB120-18540	Rat IgG2b kappa (RTK4530), PE/Cy7
NB120-18536	Rat IgG2b kappa (RTK4530), BSA/Azide free
NB120-18543	Rat IgG2c kappa (RTK4174), Biotin
NB120-18485	Syrian Hamster IgG (SHG-1), APC
NB120-18486	Syrian Hamster IgG (SHG-1), Biotin
NB120-18484	Syrian Hamster IgG (SHG-1), PE



ORDERING

U.S. ORDERING

Phone: 303.730.1950
888.506.6887
Fax: 303.730.1966
Email: orders@novusbio.com
Web: www.novusbio.com

EUROPEAN ORDERING

Novus Europe
Phone: +44 (0) 1223 426001
Fax: +44 (0) 871 971 1635
Email: europe@novusbio.com
Web: www.novusbio.com

Novus Germany
Phone: +49-6922-22340-60
Fax: +49-0800-58926-79
Email: germany@novusbio.com
Web: www.novusbio.com

Novus Italy
Phone: +39 02 4032 6786
Fax: +39 02 4032 6340
Email: italy@novusbio.com
Web: www.novusbio.com

CANADIAN ORDERING

Phone: 905.827.6400
Phone: 855.668.8722
Fax: 905.827.6402
Email: canada@novusbio.com
Web: www.novusbio.com

TECHNICAL SUPPORT

Phone: 303.730.1950
888.506.6887
Email: technical@novusbio.com

Chat with a Scientist featured on our website: www.novusbio.com