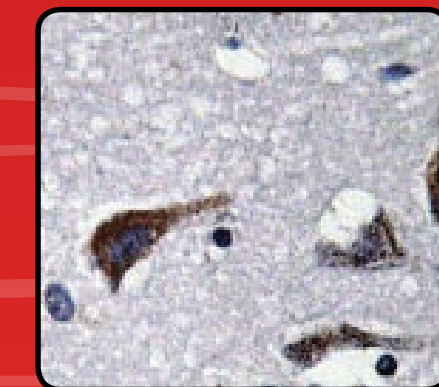
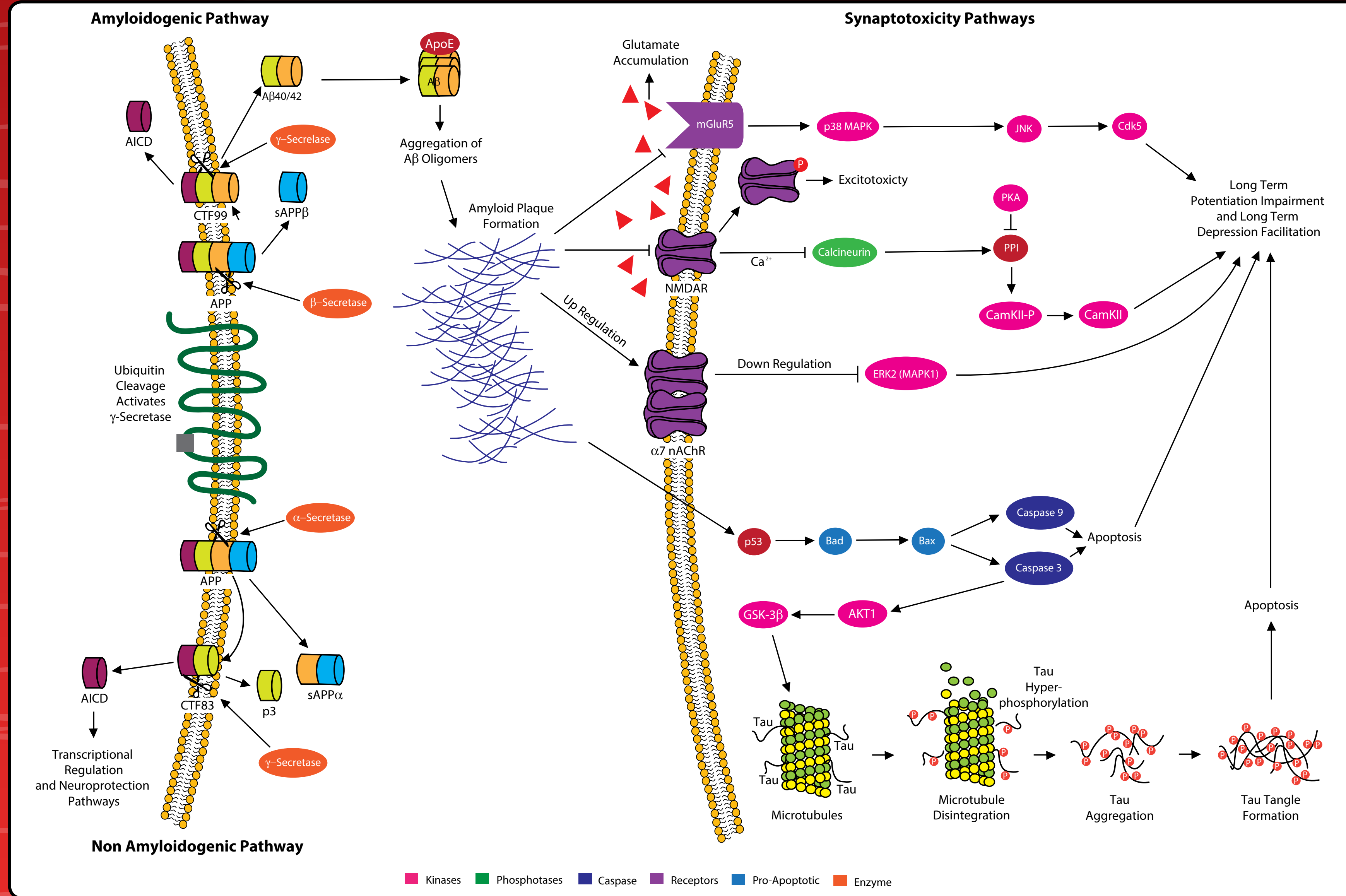


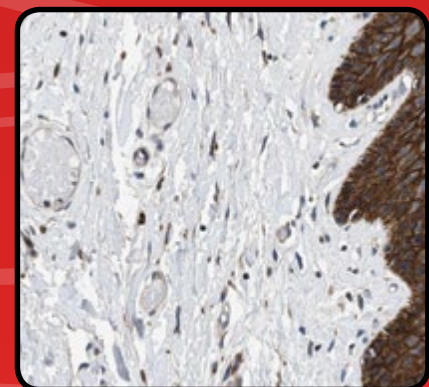
Pathways of Neurodegeneration in Alzheimer's Disease

Related Antibodies

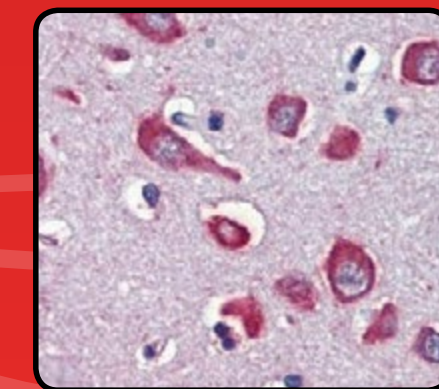
- ApoE4
- ApoER2
- BACE1
- Calcineurin
- Cam Kinase II
- Cathepsin B
- Cdk5
- Glutamate
- GSK-3 beta
- JNK
- Metabotropic Glutamate Receptor 1
- Metabotropic Glutamate Receptor 2
- Metabotropic Glutamate Receptor 3
- Metabotropic Glutamate Receptor 4
- Metabotropic Glutamate Receptor 5
- Metabotropic Glutamate Receptor 6
- Nicotinic Acetylcholine Receptor alpha 7
- NMDAR1
- NMDAR2A
- NMDAR2B
- NMDAR2C
- NMDAR2D
- NMDAR3A
- NMDAR3B
- p38
- p53
- PKA
- Presenilin 1
- Presenilin 2
- Reelin
- Tau
- Ubiquitin



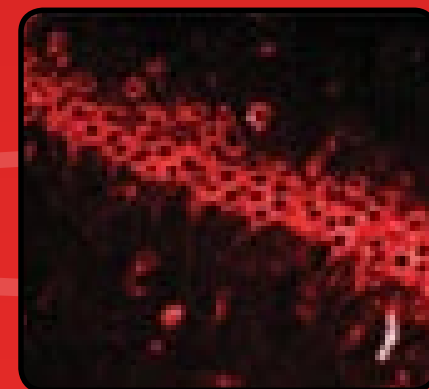
NBP1-19797 • Cathepsin B



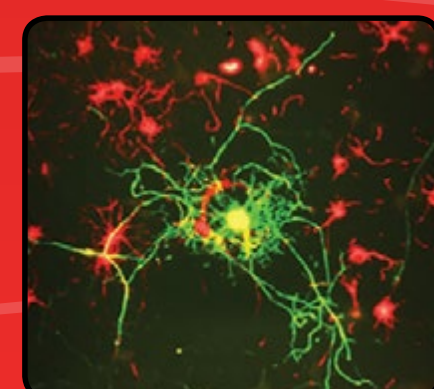
NBP1-89734 • metabotropic Glutamate Receptor 5



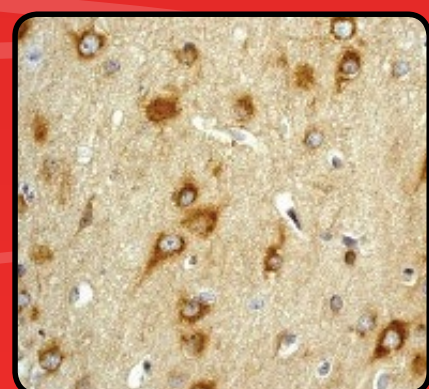
NBP1-52375 • Nicotinic Acetylcholine Receptor alpha 7



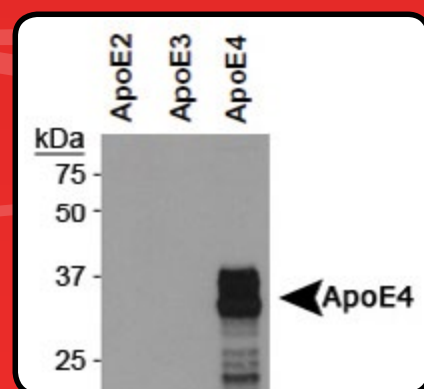
NB100-74473 • NMDAR1



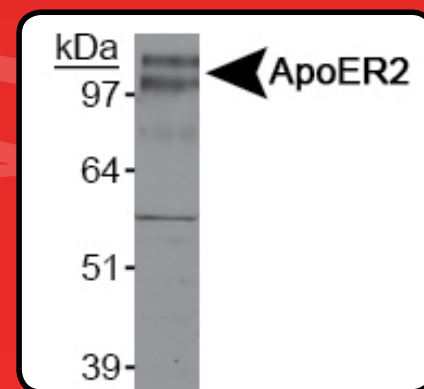
NB300-134 • 160kDa Neurofilament Medium



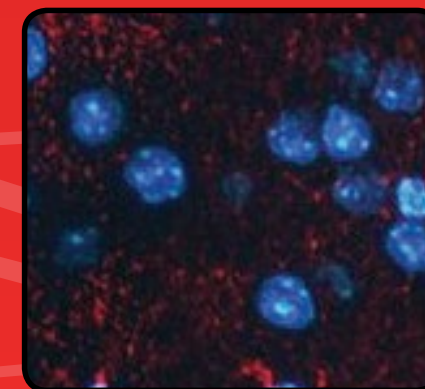
NB110-55461 • Amyloid Precursor Protein



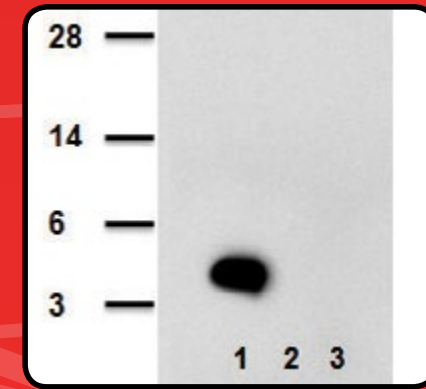
NBP1-49529 • ApoE4



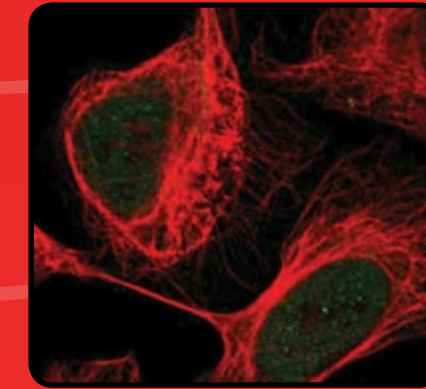
NB100-2216 • ApoER2



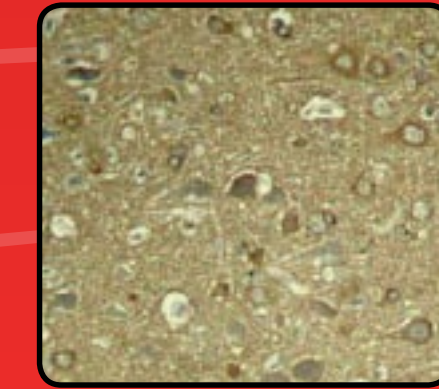
NBP1-62416 • BACE1/beta-secretase 1



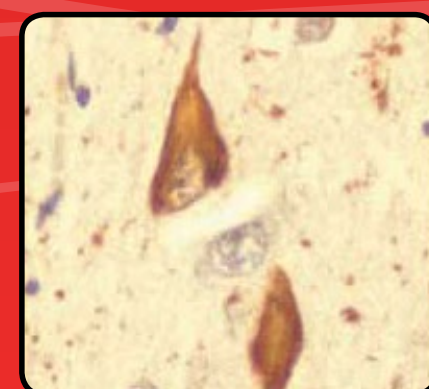
NBP2-13075 • beta Amyloid



NBP1-88218 • Calcineurin A



NB100-82244 • Tau



NB300-130 • Ubiquitin