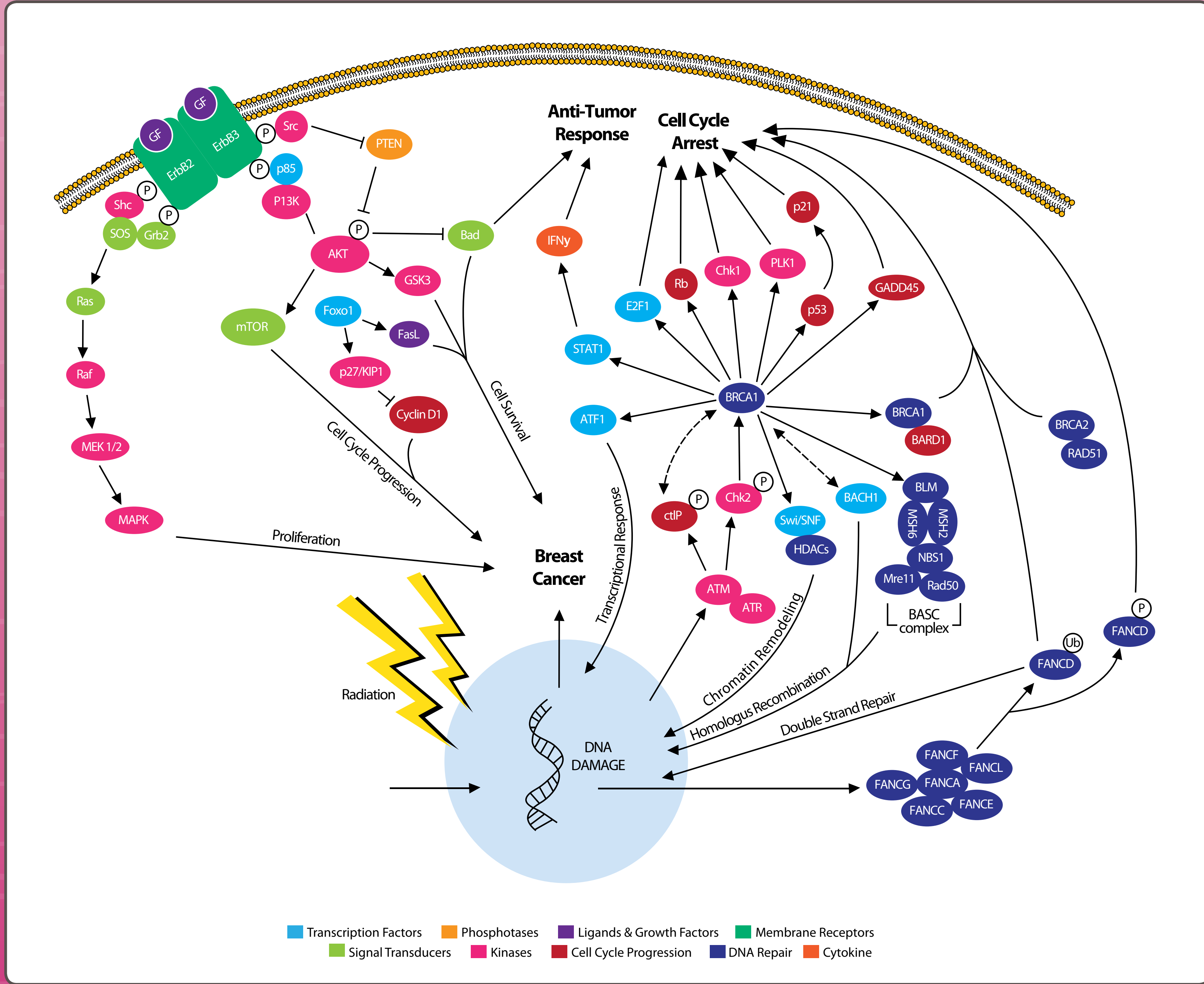
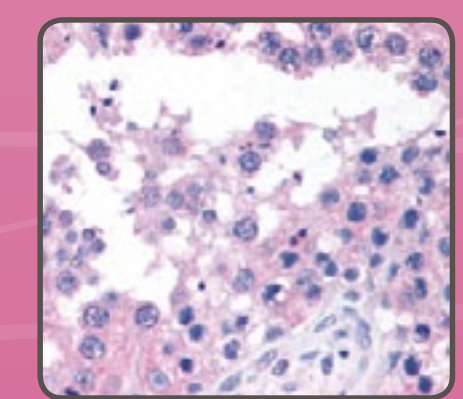


# Breast Cancer Pathway

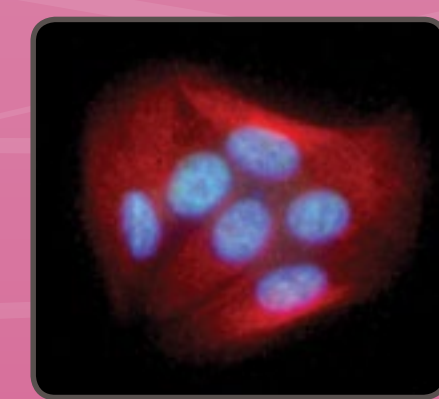


## Breast Cancer Antibodies

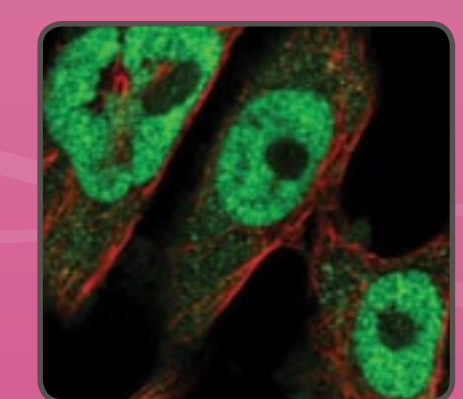
- 53BP1
- AIB1
- ATM
- ATR
- BAAT1
- BAP1
- BARD1
- BCAS2
- Blm
- Bmi1
- BRCA1
- BRCA2
- Chk1
- CDKU
- Cyclin D1
- DBC1
- ErbB2
- FANCI
- FANCD1
- FOXA1
- GRB7
- PALB2
- RAP80
- SLIRP
- Tenascin C
- YAP1



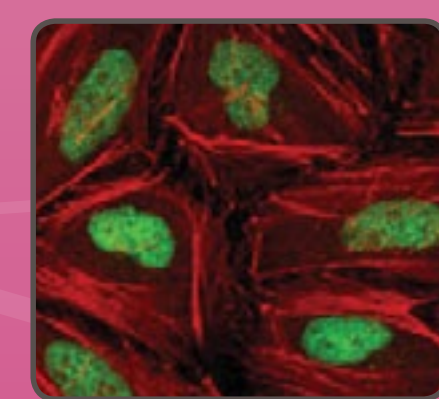
NB100-104 • ATM



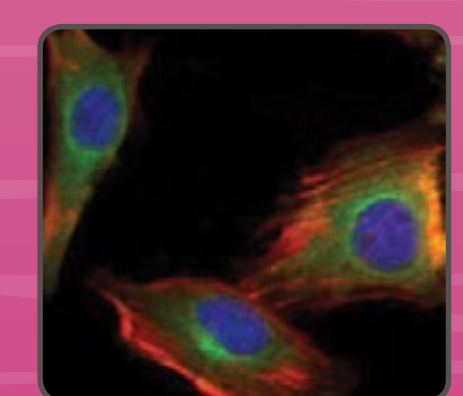
NB100-598 • BRCA1



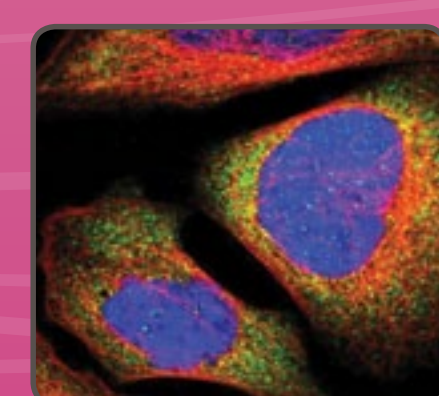
NB1-88361 • BRCA2



NB1-47549 • Chk2



NB1-47470 • GSK3 beta



NB1-81579 • STAT1

Visit [www.novusbio.com](http://www.novusbio.com)  
for a full list of Breast Cancer  
Related Antibodies.