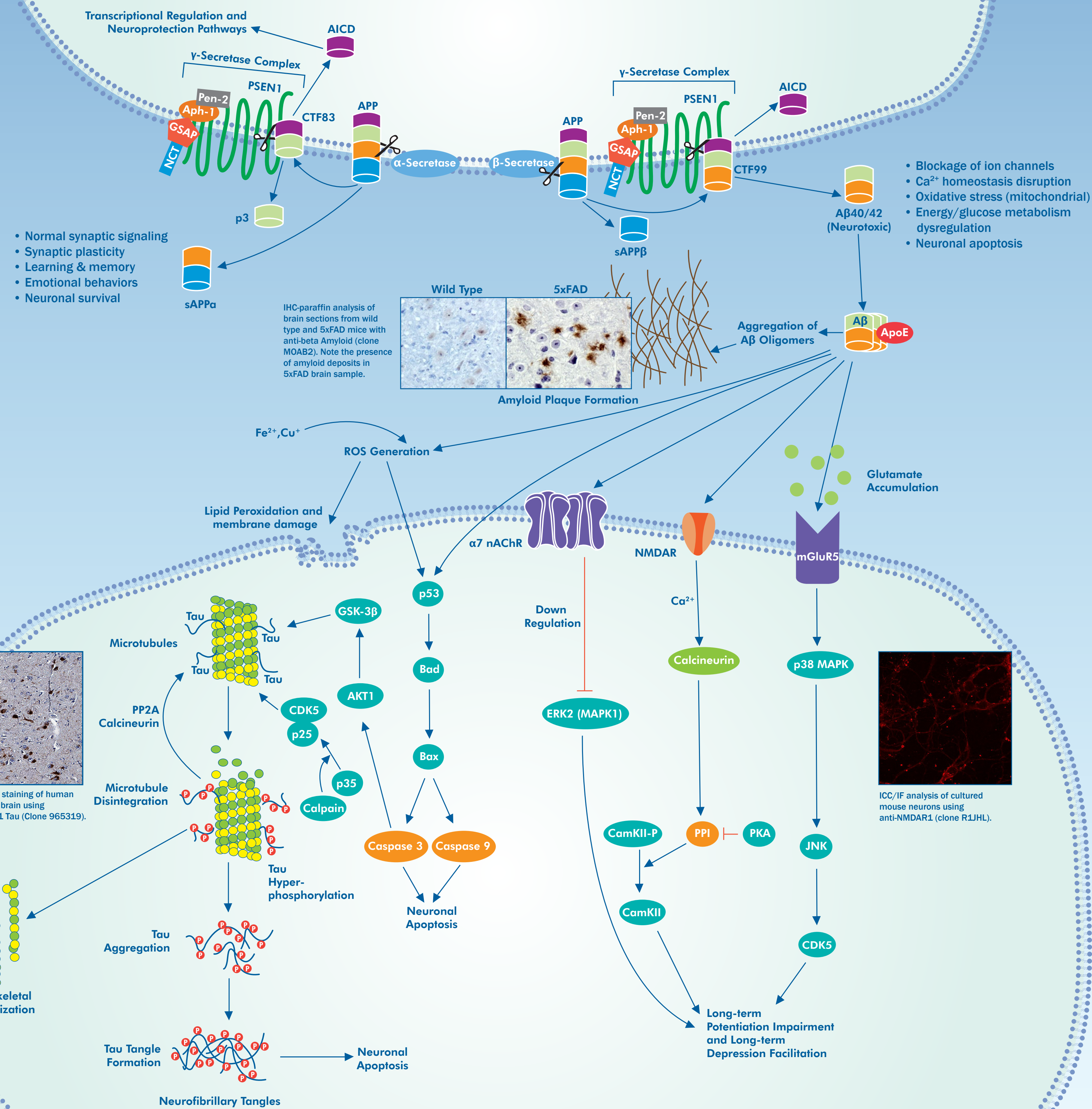
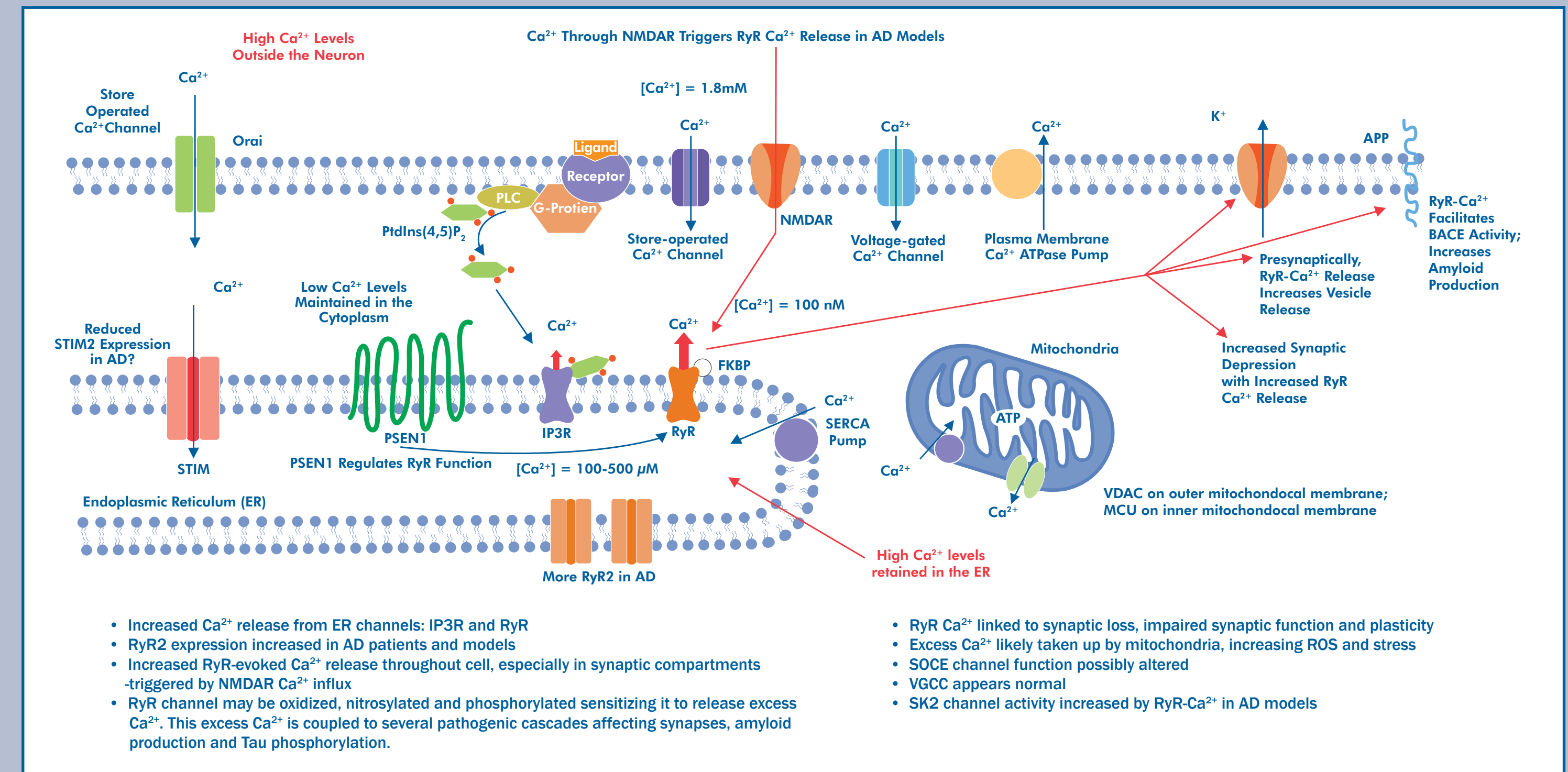


Grace Stutzmann, PhD, Department of Neuroscience, Rosalind Franklin University, The Chicago Medical School, North Chicago, IL 60064 (e-Mail: grace.stutzmann@rosalindfranklin.edu)

Alzheimer's Disease (AD) Signaling Cascade



Role of Increased Intracellular Calcium Signaling in AD:



Proposed Role of RyR-Ca²⁺ Signaling in Early Impairment of Short Term Plasticity at the CA3-CA1 Synapse in AD.

