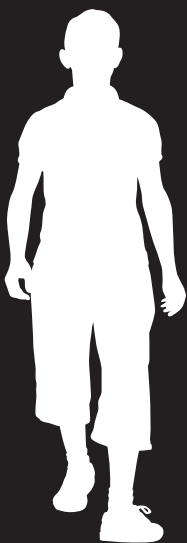


DIABETES

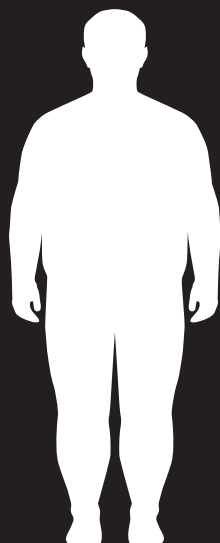
Types of Diabetes ⁽²⁾

TYPE 1



Often occurs in teens or early adulthood.
10% of people with diabetes have Type 1.

TYPE 2



Risk of Type 2 is increased in overweight, inactive & older people.
90% of people with diabetes have Type 2.

GESTANTIONAL



Occurs during pregnancy.

Prediabetes occurs when people have high blood sugar and it is not yet Type 2 ⁽⁵⁾



1.4

million new cases are diagnosed each year ⁽⁴⁾

The American Diabetes Association estimates that the total national cost of diagnosed diabetes in the United States is

\$245 Billion ⁽⁴⁾

Symptoms: Weight gain/loss, Frequent Urination, Extreme Thirst/Hunger, Fatigue, Lack of Energy, Blurred Vision ⁽²⁾

