

A microscopic image of tissue, likely muscle, showing green and red staining. The green staining highlights the striated structure of the muscle fibers, while the red staining indicates the presence of certain cells or structures. The image is used as a background for the catalog cover.

CATALOG OF ANTIBODIES FOR

HYPOXIA

 **NOVUS**
BIOLOGICALS®
Today's Research. Tomorrow's Discovery.

Table of Contents

HIF-1 Alpha Antibodies 2

HIF-1 Beta Antibodies..... 3

HIF-2 Alpha Antibodies 3

HIF-3 Alpha Antibodies 3

Beclin 1 Antibodies 4

LC3 Antibodies 4

VEGF Antibodies 5

EGLN Antibodies 6

Lysyl Oxidase Antibodies 6

VHL Antibodies 7

More Hypoxia Antibodies 7-8

Hypoxia Positive Controls 9

Additional Hypoxia Targets 9

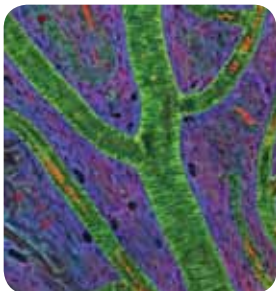
In The News 10

Application Key

- ChIP** - Chromatin IP
- ELISA** - Enzyme-linked Immunosorbent Assay
- FACS** - Fluorescent Activated Cell Sorting
- ICC** - Immunocytochemistry
- IF** - Immunofluorescence
- IHC** - Immunohistochemistry
- IHC-Fr** - Immunohistochemistry Frozen
- IHC-P** - Immunohistochemistry Paraffin
- IP** - Immunoprecipitation
- WB** - Western Blot

Reactivity Key

- | | |
|------------------------|-----------------------|
| Bv - Bovine | Ha - Hamster |
| Ca - Canine | Hu - Human |
| Ce - C. elegans | Mk - Monkey |
| Ch - Chicken | Mu - Mouse |
| Dr - Drosophila | Po - Porcine |
| Eq - Equine | Rb - Rabbit |
| Fi - Fish | Rt - Rat |
| Ft - Ferret | Sh - Sheep |
| Gp - Guinea Pig | Xp - Xenopus |
| Gt - Goat | Ze - Zebrafish |

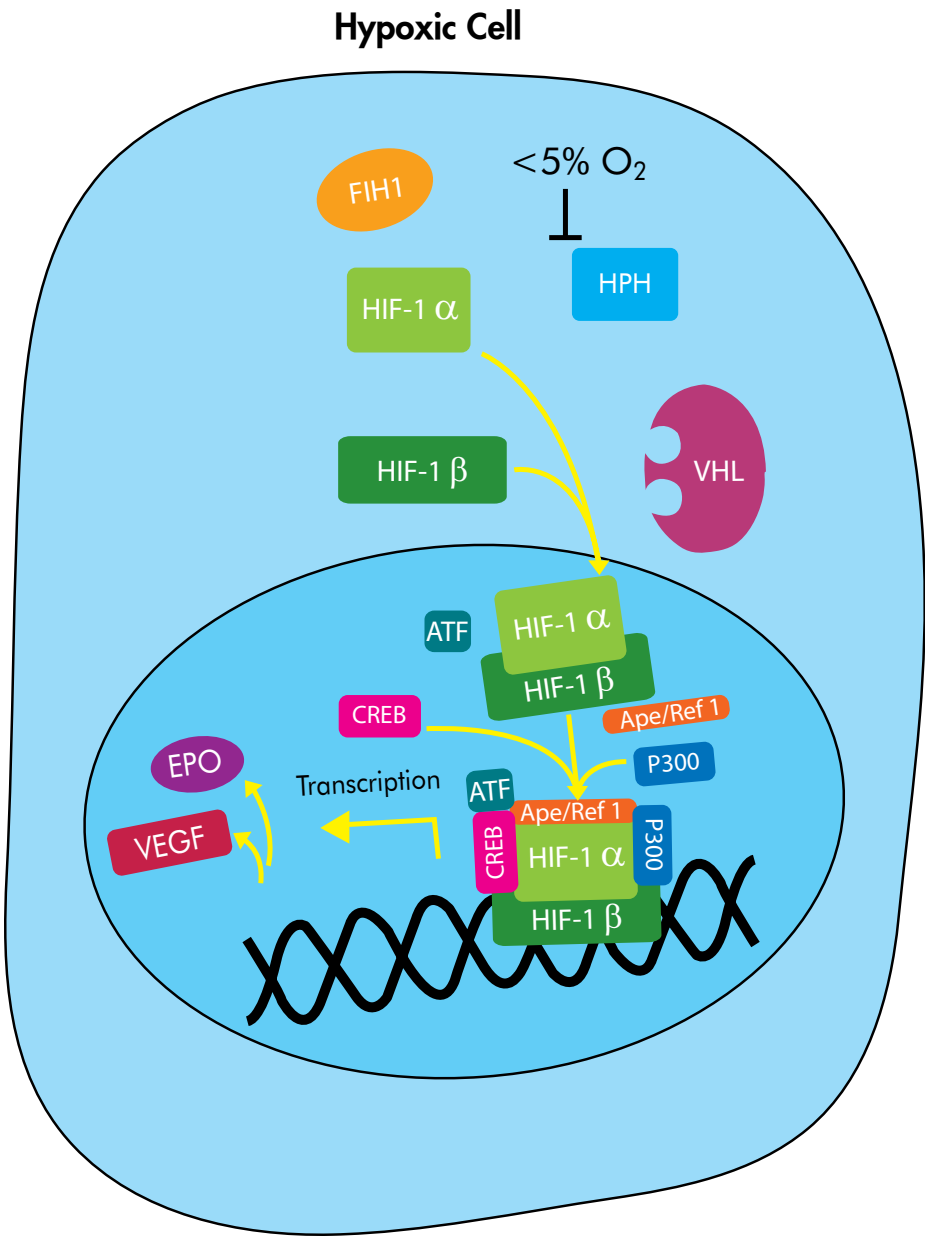


Cover Image:
Red blood cells in the artery

Hypoxia

Hypoxia is a pathological condition characterized by deprivation of adequate oxygen supply to the body as a whole (generalized hypoxia). Hypoxia contributes significantly to the pathophysiology of major categories of human disease, including myocardial and cerebral ischemia, cancer, pulmonary hypertension, congenital heart disease and chronic obstructive pulmonary disease.

Hypoxia-inducible factors (HIFs) are transcription factors that respond to changes in the levels of available oxygen in the cellular environment, specifically decreases, known as hypoxia. This transcriptional complex plays a role in mammalian oxygen homeostasis and is comprised of an alpha-beta heterodimer; HIF-1 beta is a constitutive nuclear protein that dimerizes with oxygen-regulated HIF-1 alpha subunits.

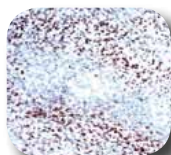


HIF-1 Alpha Antibodies

HIF-1 is a nuclear protein involved in mammalian oxygen homeostasis. HIF-1 is a heterodimer comprised of HIF-1 alpha and HIF-1 beta subunits. Both subunits are constantly translated, however, under normoxic conditions, human HIF-1 alpha is hydroxylated at Pro402 or Pro564 by a set of HIF prolyl hydroxylases. Hydroxylated HIF-1 alpha is polyubiquitinated, and degraded via the ubiquitin-

proteasome pathway. HIF-1 alpha acts by binding to hypoxia-response elements (HREs) in the promoters of genes involved in the adaptation to an environment of insufficient oxygen or hypoxia. Hypoxic tissue environments occur in vascular and pulmonary diseases as well as in tumors, thus HIF-1 alpha acts to regulate numerous processes.

HIF-1 Alpha (H1alpha67) Antibody NB100-105



Immunohistochemical analysis of human glioblastoma multiforme using NB100-105.

Species: Bv, Ha, Hu, Mu, Po, Mk, Rt, Rb, Ft, Sh
Applications: ChIP, ICC, IF, IP, IHC-P, IHC-Fr, WB

HIF-1 Alpha (H1alpha67) Antibody NB100-123



Immunoprecipitation of HIF-1 alpha using NB100-123.

Species: Bv, Hu, Mu, Po, Mk, Rt, Ft, Sh
Applications: IF, IHC-P, WB

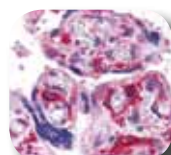
HIF-1 Alpha (ESEE122) Antibody NB100-131



Immunofluorescent detection of HIF-1 alpha (red) in a cell cytospin from a lavage of a murine skin pouch using NB100-131.

Species: Bv, Hu, Mu, Rt
Applications: IF, IP, ICC, IHC-P, IHC-Fr

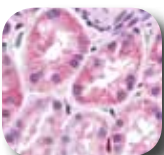
HIF-1 Alpha Antibody NB100-479



Immunohistochemical analysis of human placental villi using NB100-479.

Species: Hu, Mu, Mk, Rt
Applications: ICC, IF, IHC, WB

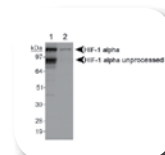
HIF-1 Alpha Antibody NB100-134



Immunohistochemical analysis of human kidney tissues using NB100-134.

Species: Hu, Mu, Mk, Rt
Applications: WB, IHC-P, ChIP, IP

HIF-1 Alpha Antibody NBP1-02160



Western blot analysis of COS7 CoCl treated cells (lane 1) and COS7 untreated cells (lane 2) using NBP1-02160.

Species: Bv, Ca, Ce, Dr, Hu, Mu, Po, Mk, Rt
Applications: WB

HIF-1 Alpha (HA111) Antibody NB100-296



Western blot analysis of human placental villous explant total protein using NB100-296.

Species: Hu
Applications: WB

HIF-1 Alpha Antibody NB100-654



Western blot analysis of COS7 CoCl treated and untreated nuclear extracts using NB100-654.

Species: Hu, Bv, Po
Applications: WB

**Also Available
Conjugated to: HRP,
Biotin, HiLyte 488,
DyLight 488, 549
and 649.**

Can't Decide? Try a Sample Pack:

NB100-900WB • HIF-1 Alpha Western Blot Sample Pack

NB100-901IHC • HIF-1 Alpha Immunohistochemistry Sample Pack

NB100-905 • HIF-1 Alpha Mouse Reactive Sample Pack

WANT YOUR ANTIBODY PRODUCED FOR FREE?

Visit our website, www.novusbio.com and fill out the Antibody Grant Sheet for a chance to receive 2 mgs of FREE antibody!

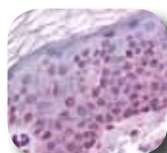
Grant Award Date: 1 Award selected on the 15th of every month. Awardees will receive a 0.2 mg test sample of affinity purified rabbit sera. (Typical antibody production takes 4-5 months). If the product works and you supply the necessary documentation, you will receive **2 mgs** of affinity purified antibody in exchange for product feedback. Submit by the end of the month to be selected in the following month's drawing by fax (below) or email (novus@novusbio.com).

HIF-1 Beta Antibodies

HIF-1 is a nuclear protein involved in mammalian oxygen homeostasis. HIF-1 is part of a heterodimer comprised of HIF-1 alpha and HIF-1 beta subunits. HIF-1 beta, also known as aryl hydrocarbon receptor nuclear translocator (ARNT), is a ligand

activated transcription factor which binds various aryl hydrocarbons, such as dioxin or benzo(a)pyrene, and mediates their toxic and carcinogenic biological responses.

HIF-1 Beta Antibody NB100-110



Immunohistochemical analysis of epidermis using NB100-110.

Species: Bv, Hu, Mu, Rt, Ft, Sh
Applications: ChIP, IHC, IP, WB

HIF-1 Beta (H1beta234) Antibody NB100-124



Immunohistochemical analysis of human glioblastoma multi-forme using NB100-124.

Species: Bv, Hu, Mu, Rt, Ft, Sh
Applications: IHC-P, WB

Can't Decide?
Try the HIF-1 Beta SuperNovus Pack (NB100-982)
Includes: NB100-110, NB100-124 and NB100-133

HIF-2 Alpha Antibodies

HIF-2 alpha is stabilized in hypoxic tissue and, similar to HIF-1 alpha, it complexes with HIF-1 beta (ARNT). Both the HIF-1 and HIF-2 complexes bind hypoxia-response elements (HREs), the promoters of many genes

involved in assisting a cell to adapt to an environment of insufficient oxygen or hypoxia. HIF-2 alpha is also a potent activator of the Tie-2 gene, which is known to be selectively expressed in endothelial cells.

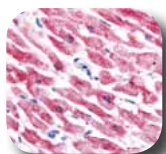
HIF-2 Alpha Antibody NB100-122



Western blot analysis on normoxic and hypoxic nuclear rat cell lysates using NB100-122.

Species: Hu, Mu, Rt, Fi
Applications: ChIP, ICC, IF, IHC, IP, WB

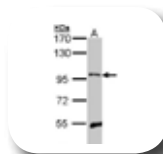
HIF-2 Alpha (ep190b) Antibody NB100-132



Immunohistochemical staining of cardiac myocytes using NB100-132.

Species: Hu, Mu, Rt
Applications: FACS, IHC-P, WB

HIF-2 Alpha Antibody NBP1-33277



Western blot analysis of HIF-2 alpha on Hep G2 lysates using NBP1-33277.

Species: Hu
Applications: WB

Also Available Conjugated to: HRP, Biotin, HiLyte 488, DyLight 488, 549 and 649.

Can't Decide? Try a Sample Pack:
NB100-902HIF2 • HIF-2 Alpha Antibody Pack

HIF-3 Alpha Antibodies

The HIF-3 alpha protein is one of several alpha/beta-subunit heterodimeric transcription factors that regulates adaptive responses to low oxygen tension (hypoxia). The alpha 3 subunit lacks the transactivation domain found in factors containing either the alpha 1 or alpha 2 subunits. HIF-3 alpha may be a marker for tumor growth and angiogenesis.

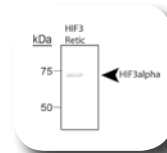
HIF-3 Alpha Antibody NB100-2529



Species: Hu, Mu
Applications: IP, WB

Western blot analysis of COS7 untreated cells (lane 1) and COS7 CoCl treated cells (lane 2) using NB100-2529.

HIF-3 Alpha Antibody NB100-2287



Species: Mu
Applications: WB

Western blot analysis of reticulocyte lysate using NB100-2287.

Autophagy and Hypoxia

Hypoxia is a critical factor in cell death or survival during an ischemic stroke, but the pathological consequences of combined ischemia-hypoxia are not fully understood. Such a combination may trigger pathological events that are not induced by ischemia alone, such as autophagy (self-eating). Although

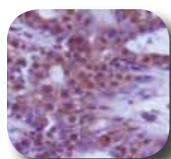
autophagy is generally a cell survival and developmental mechanism, massive autophagy is associated with cell death and it plays a wide variety of physiological and pathophysiological roles. It is thought that the combination of ischemia and hypoxia accelerate an energy crisis and precipitate autophagy.

Beclin 1 Antibodies

Beclin 1 is the first identified mammalian gene to mediate autophagy. It also acts as a tumor suppressor and has antiviral function. In gene trans-

fer studies, Beclin 1 promotes nutrient deprivation-induced autophagy, inhibits mammary tumorigenesis, and inhibits viral replication.

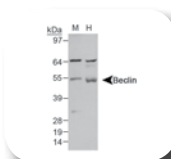
Beclin 1 Antibody NB110-87318



Immuno-histochemical analysis of normal breast tissue using NB110-87318.

Species: Bv, Ch, Hu, Mu, Po, Mk, Rt, Xp
Applications: IHC-P, WB

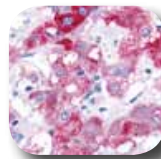
Beclin 1 Antibody NB500-266



Western blot analysis of liver lysates using NB500-266.
Lane 1: mouse liver
Lane 2: human liver

Species: Hu, Mu
Applications: WB

Beclin 1 Antibody NB500-249



Immuno-histochemical analysis of pheochromocytoma of the adrenal medulla using NB500-249.

Species: Hu, Mu
Applications: ICC, IF, IHC-P, IP, WB

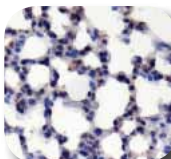
Beclin 1 (1B7) Antibody NBP1-00084



Immuno-histochemical analysis of mouse brain using NBP1-00084.

Species: Bv, Ch, Hu, Mu, Po, Mk, Rt, Eq
Applications: IHC-P, WB

Beclin 1 (4H10) Antibody NBP1-00085



Immuno-histochemical analysis of mouse lung using NBP1-00085.

Species: Bv, Ch, Hu, Mu, Po, Mk, Rt, Eq
Applications: IHC-P, WB

Can't Decide? Try the Beclin Antibody Sample Pack:
NB910-95609
Includes:
NB 500-249, NB500-266, and NB110-87318

LC3 Antibodies

LC3, a mammalian homologue of Apg8, was originally identified as microtubule-associated protein 1 light chain 3. It is a component of both the MAP1A and MAP1B microtubule-binding domain and it is thought that the heavy-chain independent regulation of LC3 expression modifies MAP1 microtubule-binding

activity during development. Moreover, LC3 is now thought to also be involved in autophagy. LC3-I is cytosolic and LC3-II is membrane bound and enriched in the autophagic vacuole fraction. LC3-II is the first mammalian protein identified that specifically associates with the autophagosome membranes.

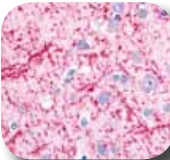
LC3 Antibody NB100-2220



Immuno-histochemical analysis of cerebral cortex neurons with cell processes using NB100-2220.

Species: Hu, Mu, Rt
Applications: IF, IP, IHC-P, WB

LC3 Antibody NB100-2331



Immuno-histochemical analysis of human cerebral cortex cell processes using NB100-2331.

Species: Hu, Mu, Rt, Bv, Xp, Ze
Applications: IP, IHC-P, WB

LC3 Antibody NB600-1384



Immuno-histochemical analysis of treated U373-MG (human glioblastoma) cells using NB600-1384.

Species: Hu, Mu
Applications: FACS, IHC, IF, ICC, WB

Can't Decide? Try a Sample Pack:

NB910-40435 • LC3 Antibody SuperNovus Pack

NB910-40752 • LC3/LC3B Antibody SuperNovus Pack

VEGF Antibodies

Vascular endothelial growth factor (VEGF) is an important signaling protein involved in both vasculogenesis (the de novo formation of the embryonic circulatory system) and angiogenesis (the growth of blood vessels from pre-existing vasculature).

As its name implies, VEGF activity has been mostly studied on cells of the vascular endothelium, although it does effect a number of other cell types, such as neurons, cancer cells and kidney epithelial cells.

Catalog #	Product	Host	Type	Application	Species
18950002	VEGF	Rabbit	Polyclonal	ELISA	Hu
NB100-698	VEGF	Rabbit	Polyclonal	IHC-P	Hu, Mu, Rt
NB600-548	VEGF (5C3.F8)	Mouse	Monoclonal	IHC-P, WB	Hu, Mu
NB110-57642	VEGF (EP1176Y)	Rabbit	Monoclonal	FACS, IHC, IP, WB, ICC	Hu
NB100-664	VEGF (VG1)	Mouse	Monoclonal	IHC, IF, WB, IHC-P, IHC-Fr	Ca, Hu, Mu, Rt
NB100-648	VEGF (VG76e)	Mouse	Monoclonal	ELISA, ICC, IF, IP, WB, IHC-P	Bv, Hu, Po
NB100-2381	VEGFA	Rabbit	Polyclonal	WB	Bv, Ca, Ch, Ee, GP, Ha, Hu, Mk, Mu, Po, Rt, Sh
27220002	VEGFB	Rabbit	Polyclonal	ELISA	Hu
NB600-1002	VEGFC	Rabbit	Polyclonal	ELISA, IHC, IP, WB	Mu, Rt
NB600-1007	VEGFR1	Rabbit	Polyclonal	ELISA, IP	Hu
NB100-527	VEGFR1	Rabbit	Polyclonal	FACS, WB	Hu
NB100-685	VEGFR1	Rabbit	Polyclonal	IHC-P, IHC-Fr, WB	Hu, Mu, Rt
NB200-207	VEGFR1 (E1C)	Mouse	Monoclonal	FACS, ELISA, IHC-Fr	Hu
NB600-1006	VEGFR1 (EWF)	Mouse	Monoclonal	ELISA, IF, IP, WB	Hu
NB600-1004	VEGFR1 (F11-1/EWC)	Mouse	Monoclonal	ELISA, IP, WB	Hu, Mu
NB110-57643	VEGFR1 (N-term) (Y103)	Rabbit	Monoclonal	IHC, IP, WB, ICC	Hu, Mu
NB100-2382	VEGFR2	Rabbit	Polyclonal	FACS, WB	Hu
NB100-529	VEGFR2	Rabbit	Polyclonal	WB	Hu
NB100-530	VEGFR2	Rabbit	Polyclonal	WB	Hu
NSB1053	VEGFR2	Rabbit	Polyclonal	IP, WB	Hu, Mu
NB100-627	VEGFR2	Rabbit	Polyclonal	WB, IP	Hu, Mu
NB100-686	VEGFR2	Rabbit	Polyclonal	IF, IHC-Fr, IHC-P, WB	Hu, Mu, Rt
NB200-208	VEGFR2 (E1C)	Mouse	Monoclonal	FACS, ELISA, IHC-Fr	Hu, Rt
NB100-40753	VEGFR2 (E1C), Biotin	Mouse	Monoclonal	FACS	Hu
NB110-57644	VEGFR2 (EP105Y)	Rabbit	Monoclonal	WB	Hu
NB600-1009	VEGFR2 (EWC)	Mouse	Monoclonal	FACS, ELISA, WB	Hu
NB110-9982	VEGFR2 (KDR-2 or 260.4)	Mouse	Monoclonal	ELISA, IHC, WB	Hu
NB100-82260	VEGFR2 [Tyr1175]	Rabbit	Polyclonal	IHC	Hu, Mu, Rt
NBP1-19948	VEGFR2 [phospho Tyr1214]	Rabbit	Polyclonal	IHC-P	Hu, Mu, Rt
NBP1-19479	VEGFR2/3	Rabbit	Polyclonal	IF, IHC-P	Hu, Mu, Rt
NB110-60968	VEGFR3 (MM0003-7G63)	Mouse	Monoclonal	IHC, WB	Hu
NBP1-43259	VEGFR3 (AFL4)	Rat	Monoclonal	FACS, Func, IHC-Fr, IP, WB	Mu
NB120-15295	VEGFR3	Rabbit	Polyclonal	IHC-P	Hu, Mu, Rt
23770002	VEGFR3	Rabbit	Polyclonal	ELISA	WB

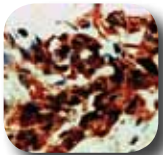
VEGFA Antibody NB100-2381



Western blot analysis of CSF-IR/VEGFA chimera transfected lysate using NB100-2381.

Species: Bv, Ca, Ch, Ee, Ha, Hu, Mu, Mk, Mu, Po, Rt, Sh
Applications: WB

VEGFR1 Antibody NB100-685



Immunohistochemical analysis of human angiosarcoma using NB100-685.

Species: Hu, Mu, Rt
Applications: WB, IHC-P, IHC-Fr

VEGFR1 Antibody NB100-527



Western blot analysis of chimeric CSF-1R/VEGFR-2 detection in transfected lysates using NB100-527.

Species: Hu
Applications: FACS, WB

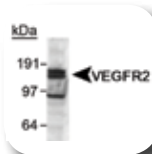
VEGFR2 Antibody NB100-529



Western blot analysis of CSF-1 receptor/VEGFR2 chimera transfected lysate using NB100-529.

Species: Hu
Applications: WB

VEGFR2 Antibody NB100-2382



Western blot analysis of CSF-IR/VEGFR2 chimera transfected lysate using NB100-2382.

Species: Hu
Applications: FACS, WB

VEGFR2 Antibody NB100-627



Western blot analysis of VEGFR2 in CSF-1/VEGFR2 transfected lysates using NB100-627.

Species: Hu, Mu
Applications: IP, WB

VEGFR2 Antibody NB100-530



Western blot analysis of VEGFR-2 doublet in VEGFR-2 induced HUVEC lysate using NB100-530.

Species: Hu
Applications: WB

EGLN Antibodies

Prolyl hydroxylases capable of modifying HIF-1 alpha are encoded by three genes termed EGLN 1, 2, and 3 because of their homology to the egl-9 gene of *C. elegans*. These proteins have also been named HIF prolyl hydroxylases (HPH) and prolyl hydroxylase domain proteins (PHD). It has been suggested that different EGLN proteins function as hydroxylases for separate pools of cytoplasmic and nuclear HIF-1 alpha.

When over-expressed, each of the EGLN proteins can hydroxylate and reduce HIF-1 alpha protein levels and activity. Hypoxia-dependent up-regulation of select EGLN proteins makes an attractive negative feedback mechanism that could act to ensure the rapid removal of HIF-1alpha subunits when hypoxic cells are reoxygenated.

HIF Prolyl Hydroxylase 1 Antibody NB100-310

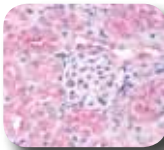


Western blot analysis of human PHD1 using NB100-310.

Species: Hu, Mu
Applications: WB

Catalog #	Product	Host	Type	Application	Species
NB100-310	HIF Prolyl Hydroxylase 1	Rabbit	Polyclonal	WB	Hu, Mu, Rt
NB100-137	HIF Prolyl Hydroxylase 2	Rabbit	Polyclonal	IHC, WB	Hu, Rt
NB100-2219	HIF Prolyl Hydroxylase 2	Rabbit	Polyclonal	IHC, WB	Mu, Rt
NBP1-30328	HIF Prolyl Hydroxylase 2 (366G/76/3)	Mouse	Monoclonal	IHC-P, WB	Hu
NB100-303	HIF Prolyl Hydroxylase 3	Rabbit	Polyclonal	WB	Hu, Mu
NBP1-30440	HIF Prolyl Hydroxylase 3	Mouse	Monoclonal	IHC-P, WB	Bv, Hu, Mk, Mu, Rt
NB100-295	HIF Prolyl Hydroxylase 4	Rabbit	Polyclonal	WB	Hu

HIF Prolyl Hydroxylase 2 Antibody NB100-2219



Immunohistochemical analysis of mouse renal tubular epithelium using NB100-2219.

Species: Mu
Applications: IHC, IP, WB

HIF Prolyl Hydroxylase 2 Antibody NBP1-30328



Western blot analysis in HeLa whole cell extracts using NBP1-30328.

Species: Hu
Applications: IHC-P, WB

HIF Prolyl Hydroxylase 4 Antibody NB100-295



Western blot analysis of HeLa whole cell lysate (normoxic and hypoxic) using NB100-295.

Species: Hu
Applications: WB

Can't Decide? Try a Sample Pack:

NB100-903PHD • HIF Prolyl Hydroxylases PHD1, PHD2, PHD3 and PHD4 Antibody Sample Pack

Lysyl Oxidase Antibodies

Lysyl oxidase (LOX) is a copper-dependent amine oxidase that plays a critical role in the biogenesis of connective tissue matrices by crosslinking the extracellular matrix proteins, collagen and elastin.

Levels of LOX are elevated in hypoxic human tumors. Research shows that LOX is regulated by HIF and that tumors expressing LOX at high levels are associated with increased metastasis and poor patient prognosis.

Catalog #	Product	Host	Type	Application	Species
NB100-2530	LOX	Rabbit	Polyclonal	IHC-P, WB	Hu, Mu, Rt, Bv, Po, Xp, Ch, Ze
NB100-2527	LOX	Rabbit	Polyclonal	IHC-P, WB	Hu, Mu
NB100-2528	LOX	Rabbit	Polyclonal	WB	Bv, Hu, Mu, Rt
NB110-59729	LOX	Rabbit	Polyclonal	IHC, WB	Mu, Rt
NB110-41568	LOX Propeptide	Rabbit	Polyclonal	ICC, IF, IHC, WB	Hu, Mu, Rt
NBP1-30012	LOX Propeptide	Rabbit	Polyclonal	IF, IHC, WB	Hu, Mu

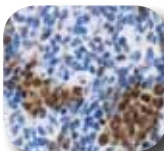
LOX Antibody NB100-2530



Immunohistochemical analysis of human placental villi (trophoblasts) using NB100-2530.

Species: Hu, Mu, Rt, Bv, Po, Ch, Ze, Xp
Applications: WB, IHC-P

LOX Antibody NB110-59729



Immunohistochemical analysis of mouse spleen using NB110-59729.

Species: Mu, Rt
Applications: IHC-P, WB

LOX Antibody NB100-2527



Western blot analysis of human kidney lysate using NB100-2527.

Species: Hu, Mu
Applications: IHC, WB

VHL Antibodies

von Hippel-Lindau syndrome (VHL) is an inherited disorder characterized by the formation of tumors and fluid-filled sacs (cysts) in many different parts of the body. Tumors may be either benign or malignant and usually appear during young adulthood. However,

the signs and symptoms of von Hippel-Lindau syndrome can occur throughout life. VHL has been shown to act as a ubiquitin ligase which targets HIF-1 alpha for proteasome degradation.

Catalog#	Product	Host	Type	Application	Species
NB100-1899	von Hippel-Lindau	Rabbit	Polyclonal	WB	Hu
NB100-485	von Hippel-Lindau	Rabbit	Polyclonal	WB	Hu
NB100-488	von Hippel-Lindau	Rabbit	Polyclonal	WB	Rt
NB110-10160	von Hippel-Lindau (3F391/Ig33)	Mouse	Monoclonal	IHC, WB	Hu, Mu

Von Hippel Lindau NB100-485

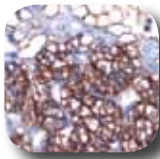


Western blot analysis of human kidney samples using NB100-485.

Species: Hu
Applications: WB

More Hypoxia Antibodies

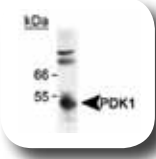
Carbonic Anhydrase IX Antibody NB100-417



Immuno-histochemical analysis of renal carcinoma using NB100-417.

Species: Ca, Hu
Applications: IF, IHC-P, WB

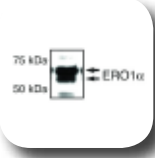
PKD1 Antibody NB100-2383



Western blot analysis of human heart lysate using NB100-2383.

Species: Ch, Hu, Mu, Rt
Applications: WB

ERO1L Antibody NB100-2525



Western blot analysis of endogenous 293T cell lysate using NB100-2525.

Species: Hu, Mu, Rt
Applications: ICC, IF, WB

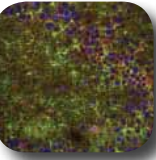
IRE-1 alpha [Ser724] Antibody NB100-2323



Western blot analysis of wildtype phosphorylated IRE-1 alpha using NB100-2323.

Species: Hu, Mu, Rt
Applications: WB

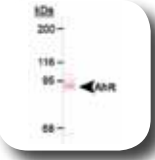
GLT1b (10B7) Antibody NB110-58775



Immuno-histochemical analysis of rat brain using NB110-58775.

Species: Rt, Mu
Applications: IHC, ICC, WB

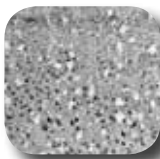
Aryl Hydrocarbon Receptor Antibody NB100-2289



Western blot analysis of mouse liver cytosol using NB100-2289.

Species: Gp, Mu
Applications: ELISA, IP, ICC, WB

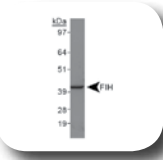
Factor Inhibiting HIF-1 Antibody NB100-428



Immuno-histochemical analysis of rat brain tissue using NB100-428.

Species: Hu, Rt
Applications: WB, IHC, IP

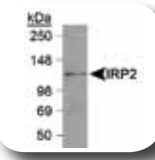
Factor Inhibiting HIF-1 (162c) Antibody NBP1-30333



Western blot analysis in A431 cell lysates using NBP1-30333.

Species: Hu
Applications: IHC-P, WB

IRP2 Antibody NB100-1797



Western blot analysis of mouse liver lysate using NB100-1797.

Species: Mu
Applications: WB

Abnova, Acris, biosensis, Innova, SDIX

Novus distributes for these companies:



CITED4 (HT13-2D6.3) Antibody
NB110-41572

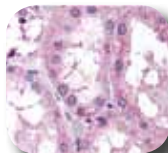


Western blot analysis of transfected whole cell Hep3B lysate using NB110-41572.

Species: Hu

Applications: ELISA, IF, IP, WB

NOX4 Antibody
NB110-58849



Immunohistochemical analysis of proximal convoluted tubules of the kidney using NB110-58849.

Species: Mu, Hu, Rt, Bv, Sh, Mk

Applications: IHC, WB

STEP (23E5) Antibody
NB300-202



Western blot analysis of striatal rat protein homogenates using NB300-202.

Species: Rt

Applications: WB

PUMA Antibody
NB500-261



Western blot analysis of HL-60 whole cell lysate using NB500-261.

Species: Hu

Applications: WB

SAT1 Antibody
NB110-41622

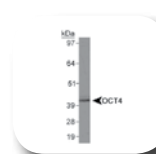


Western blot analysis of human SAT1 transfected lysate using NB110-41622.

Species: Bv, Ch, Gt, Ha, Hu, Mu, Po, Rt, Xp

Applications: WB

OCT4 Antibody
NB100-2379



Western blot analysis of mouse brain lysate using NB100-2379.

Species: Bv, Fe, Hu, Mu, Po, Mk

Applications: FACS, ICC, IF, WB

COXIV, Isoform 1 Antibody
NB110-39115

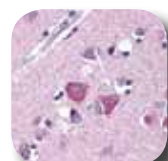


Western blot analysis of HEK 293 lysate using NB110-39115.

Species: Hu, Bv, Mu, Rt, Mk

Applications: WB

PGC-1 Beta Antibody
NB110-58858



Immunohistochemical analysis of human cortical neurons showing cytoplasmic and nuclear staining using NB110-58858.

Species: Hu, Mu

Applications: IHC, WB

p14ARF Antibody
NB200-111

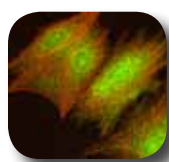


Western blot analysis of HeLa whole cell lysate using NB200-111.

Species: Hu

Applications: ICC, IF, WB

AKT [Ser473] Antibody
NB600-590



Immunofluorescent analysis of cardiomyocytes infected with adenovirus using NB600-590.

Species: Hu

Applications: ELISA, IHC, IF, WB

EPO Antibody
NB110-60996



Immunohistochemical analysis of human placenta tissue using NB110-60996.

Species: Hu

Applications: IHC-P, WB

KAT3A/CBP Antibody
NB100-1733



Immunohistochemical analysis of human prostate adenocarcinoma using NB100-1733.

Species: Hu

Applications: IHC

Novus Guarantee + Innovator's Reward™ Policy



Novus' Quality Guarantee

We stand behind our products 100%. If you cannot get a product to work in an application or species stated on our datasheet, our technical service team will troubleshoot with you to get it to work. If a product still does not work after troubleshooting, you can receive a free of charge replacement product or a full refund. Novus' Quality Guarantee covers 100% of the products we carry, including those that we distribute for Abnova. No hassles, no nonsense. It is that simple!

+ Innovator's Reward™

Our Innovator's Reward™ program is designed to support your innovative research with minimal financial risk to you. Should you decide to use one of our products in an application or species for which it has not been tested, Novus will provide you a 50% refund on the purchased product as well as a 50% discount on a future product of equal or lesser value. Simply email innovators@novusbio.com to apply for your award. We will send you a form for you to submit a summary of your research and report your experimental results, after which your award will be given. Your innovation can help us to accelerate bioscience research. After all, we're making your success our goal.

= 100% Support and Peace of Mind

Hypoxia Positive Controls

COS-7 Nuclear Lysate
Hypoxia Induced and Uninduced
NB800-PC26



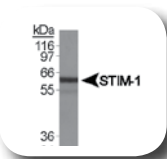
Western blot analysis of NB 800-PC26 using NB100-105, anti-HIF-1 alpha.

PC12 Nuclear Lysate
Hypoxic and Normoxic
NB810-55229



Western blot analysis of NB810-55229 using NB100-122, anti-HIF-2 alpha.

HeLa Whole Cell Lysate
NB800-PC1



Western blot analysis of STIM-1 antibody (NB110-60547) using HeLa whole cell lysate (NB800-PC1).

Additional Hypoxia Targets

A20	COX4-2	GSK3B [Ser9]	p53 [Ser15]
Adenovirus Type 5 E1A	COX-IV	HIF-1 alpha (exon-specific)	p53 [Ser6]
AhR	C-MYC	HIF1AN	p53 [Ser9]
AhR Repressor	DDIT3	HIF-3 alpha	p53 wild type + mutant
AKT	DEC1	HYOU1	p53R2
AKT [Ser473]	DUSP14	Hypoxia Up-regulated 1	p63
AKT [Thr308]	DUSP8	IRE1 alpha	PARP
AKT1	EGFR	IRE1 alpha [Ser724]	PARP1
AKT1 [Ser473]	EGLN	IRP2	PARP1 (Cleaved p25)
AKT2 [Ser473]	Endo G	ITGA1	PARP1 (Cleaved p85)
AKT2	EP300	JAB-1	PARP10
AKT2/3	EPAS1	JNK1/2 [Thr183/Tyr185]	PARP11 (p116/p85)
AKT3	EPO	JNK2	PARP12
AMPK alpha 1	ERK	Lactate Dehydrogenase	PARP2
AMPK alpha 2	ERK1	MADD	PARP4
Apolipoprotein J	ERK1/2	MMP2	PDK1
ARA9	ERK1/2 [Thr202/	MOP3	PDK1 [Tyr373/Tyr376]
ATM	Tyr204+Thr185/Tyr187]	mTOR	PER2
ATM [Ser1981]	ERK1/2 [Thr185/Thr202]	mTOR [Ser2448]	PLGF
Beta Tubulin 2	ERK1/2 [Thr202/Tyr204]	Myosin	Prolyl 4-Hydroxylase
Beta Tubulin 3	ERK2	NCX-1	Prolyl 4-hydroxylase beta
BMAL	ERK3	bNOS	SIAH1
BNIP3	ERO1	eNOS	STEP
BNIP3L	ERO1L	eNOS [Ser116]	TIMP3
Calcineurin	Factor Inhibiting HIF-1	eNOS [Ser1176]	TIMP4
Calpastatin	c-Fos	iNOS	TRIB3
Carbonic Anhydrase I	c-Fos [Thr232]	nNOS	TSC1
Carbonic Anhydrase II	c-Fos [Thr325]	nNOS [Ser1416]	TSC2
Carbonic Anhydrase IX	Fos (c-Fos)	uNOS	tumor protein p53
Carbonic Anhydrase XII	GPCR LOC51210	NOS	TXNDC5
Catalase	GbetaL	NOS1	UBE2D1
CD105	GbL	NOX4	UBE2D2
CD34	GLT1b	NRP1	VG5Q
Ceruloplasmin	Glutamine Synthetase	NRP2	Vimentin
CITED2	GSK3	OS-9	Vimentin [Ser55]
CLOCK	GSK3 (alpha + beta)	Osteopontin	Vimentin [Ser38]
COX1	[Tyr216/Tyr279]	p14ARF	Vimentin [Ser72]
COX2	GSK3 beta [Ser9]	p53	Vimentin [Ser82]
COX4-1	GSK3B	p53 [Ser392]	



IN THE NEWS

1. [\[ATM NB100-104\]](#) Hu H, et al. ATM is down-regulated by N-Myc-regulated microRNA-421. *Proc Natl Acad Sci U S A*. 2010 Jan 26;107(4):1506-11. [PMID: 20080624]
2. [\[Carbonic Anhydrase IX NB100-417\]](#) Lapinski JE, Chen L, Zhou M. Distinguishing clear cell renal cell carcinoma, retroperitoneal paraganglioma, and adrenal cortical lesions on limited biopsy material: utility of immunohistochemical markers. *Appl Immunohistochem Mol Morphol*. 2010 Oct;18(5):414-21. [PMID: 20861762]
3. [\[Factor Inhibiting HIF-1 NB100-428\]](#) Zheng X, et al. Interaction with factor inhibiting HIF-1 defines an additional mode of cross-coupling between the Notch hypoxia signaling pathways. *Proc Natl Acad Sci U S A*. 2008 Mar 4;105(9):3368-73. [PMID: 18299578]
4. [\[HIF-1 alpha NB100-105\]](#) Evens AM, et al. Hypoxia-inducible factor-1 {alpha} expression predicts superior survival in patients with diffuse large B-cell lymphoma treated with R-CHOP. *J Clin Oncol*. 2010 Feb 20;28(6):1017-24. [PMID: 20048181]
5. [\[HIF-1 alpha NB100-105\]](#) Neusser MA, et al. Human nephrosclerosis triggers a hypoxia-related glomerulopathy. *Am J Pathol*. 2010 Feb;176(2):594-607. [PMID: 20019191]
6. [\[HIF-1 alpha NB100-105\]](#) Regazzetti C, et al. Insulin induces REDD1 expression through hypoxia-inducible factor 1 activation in adipocytes. *J Biol Chem*. 2010 Feb 19;285(8):5157-64. [PMID: 19996311]
7. [\[HIF-1 alpha NB100-105\]](#) Wen W, et al. Suppression of cyclin D1 by hypoxia-inducible factor-1 via direct mechanism inhibits the proliferation and 5-fluorouracil-induced apoptosis of A549 cells. *Cancer Res*. 2010 Mar 1;70(5):2010-9. [PMID: 20179204]
8. [\[HIF-1 alpha NB100-479\]](#) Hyvärinen J, et al. Hearts of hypoxia-inducible factor prolyl 4-hydroxylase-2 hypomorphic mice show protection against acute ischemia-reperfusion injury. *J Biol Chem*. 2010 Apr 30;285(18):13646-57. [PMID: 20185832]
9. [\[HIF-1 alpha NB100-479\]](#) [\[HIF-2 alpha NB100-122\]](#) Lange C, et al. Retina-specific activation of a sustained hypoxia-like response leads to severe retinal degeneration and loss of vision. *Neurobiol Dis*. 2010 Sep 9. [PMID: 20817091]
10. [\[HIF-1 beta NB100-110\]](#) Alam H, et al. Role of the phosphatidylinositol-3-kinase and extracellular regulated kinase pathways in the induction of hypoxia-inducible factor (HIF)-1 activity and the HIF-1 target vascular endothelial growth factor in ovarian granulosa cells in response to follicle-stimulating hormone. *Endocrinology*. 2009 Feb;150(2):915-28. [PMID: 18845636]
11. [\[HIF-2 alpha NB100-122\]](#) Henze AT, et al. Prolyl hydroxylases 2 and 3 act in gliomas as protective negative feedback regulators of hypoxia-inducible factors. *Cancer Res*. 2010 Jan 1;70(1):357-66. [PMID: 20028863]
12. [\[HIF-2 alpha NB100-122 & NB100-132\]](#) Martin SK, et al. Hypoxia-inducible factor-2 is a novel regulator of aberrant CXCL12 expression in multiple myeloma plasma cells. *Haematologica*. 2010 May;95(5):776-84. [PMID: 20015878]
13. [\[LC3B NB600-1384\]](#) Li X, et al. Inhibiting the ubiquitin-proteasome system leads to preferential accumulation of toxic N-terminal mutant huntingtin fragments. *Hum Mol Genet*. 2010 Jun 15;19(12):2445-55. [PMID: 20354076]

U.S. ORDERING

Phone: 303.730.1950
888.506.6887
Fax: 303.730.1966
Email: orders@novusbio.com
Web: www.novusbio.com

EUROPEAN ORDERING

Novus Europe

Phone: +44 (0) 1223 426001
Fax: +44 (0) 871 971 1635
Email: europe@novusbio.com
Web: www.novusbio.com

Novus Germany

Phone: +49-6922-22340-60
Fax: +49-0800-58926-79
Email: germany@novusbio.com
Web: www.novusbio.com

Novus Italy

Phone: +39 02 4032 6786
Fax: +39 02 4032 6340
Email: italy@novusbio.com
Web: www.novusbio.com

CANADIAN ORDERING

Phone: 905.827.6400
Phone: 855.668.8722
Fax: 905.827.6402
Email: canada@novusbio.com
Web: www.novusbio.com

TECHNICAL SUPPORT

Phone: 303.730.1950
888.506.6887
Email: technical@novusbio.com

Chat with a Scientist featured on our website: www.novusbio.com