

PARKINSON'S DISEASE

Parkinson's disease affects the nervous system which controls movement. Damage to the levels of dopamine in the brain impairs the ability to relay messages to parts of the body which control movement. While the exact cause of the disease is unknown, researchers are examining genetic causes linked to the LRRK2 gene and environmental factors.



X 100,000 = 10,000,000

Global estimate of people that have Parkinson's (2)



SYMPTOMS: Tremors, muscle rigidity, slowed movement, balance instability (1)



Men have a 1.5x greater risk than women of developing the disease. (3)

60,000

The number of people in the US that are diagnosed with the disease each year. (6)



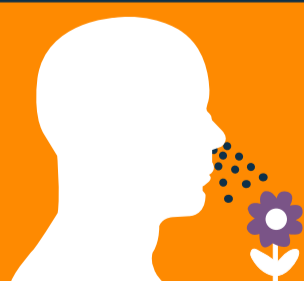
Exposure to herbicides and pesticides may increase the risk of developing the disease. (4)

60

years old is the average onset age. (8)

14th

Leading cause of death in the U.S. (7)



Decreased ability in sense of smell, which is thought to be linked to alpha-synuclein. (5)

