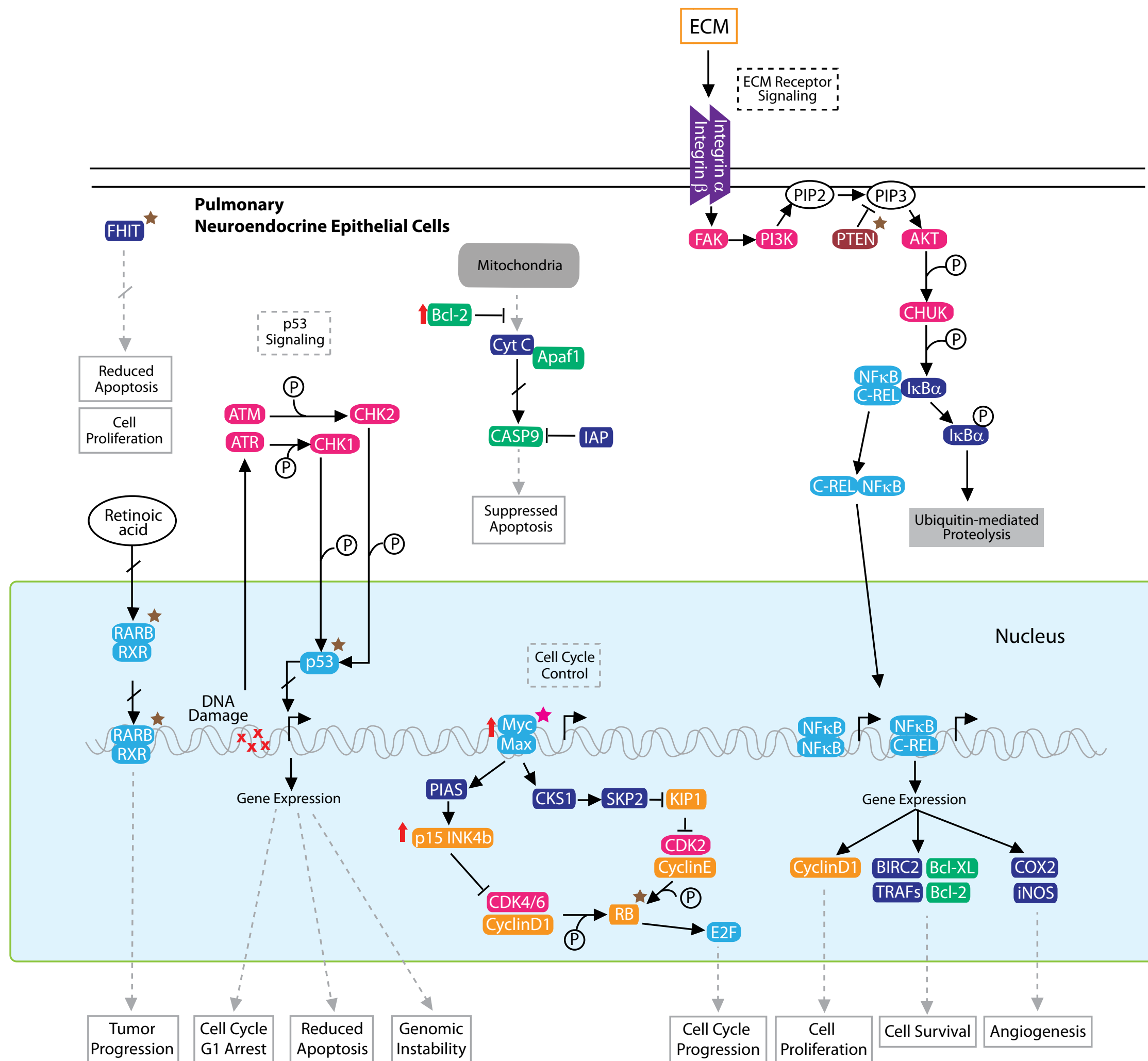


Small Cell Lung Carcinoma Pathway

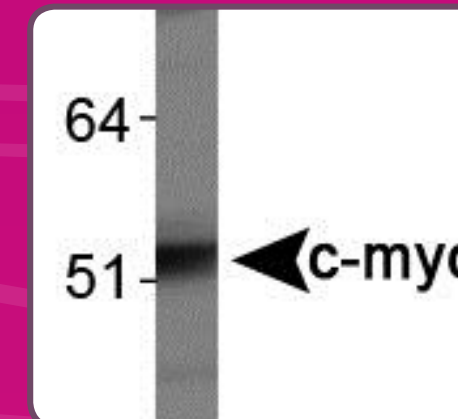
Small cell lung carcinoma (SCLC) is a highly aggressive malignancy. Molecular mechanisms altered in SCLC include induced expression of the oncogene Myc, and loss of tumor suppressor genes, such as p53, PTEN, Retinoblastoma (RB), and Fragile histidine triad (FHIT) gene. Amplification of Myc leads to more rapid cell proliferation and loss of terminal differentiation. Mutation or deletion of RB, p53 or PTEN can also result in a loss of growth control and cell cycle progression, as well as increased cell survival and genomic instability. FHIT encodes the enzyme diadenosine triphosphate hydrolase and may also play an indirect role in pro-apoptosis and cell-cycle control.



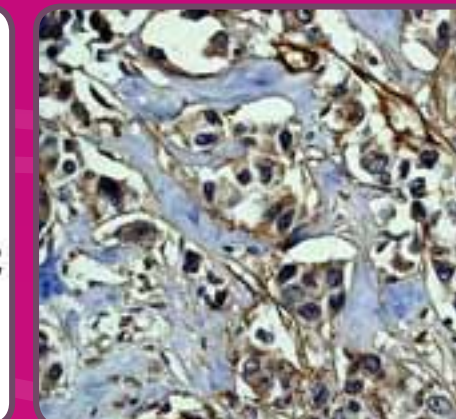
Gene mutations found in small cell lung carcinoma:

★ Oncogenes ☆ Tumor suppressor genes

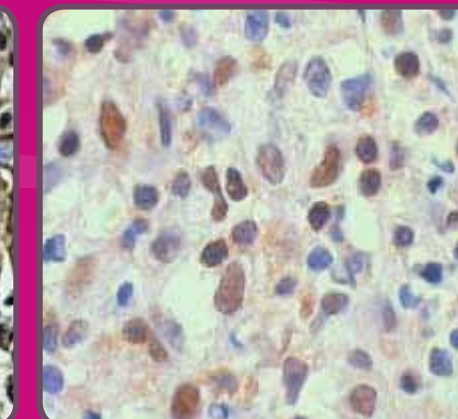
■ Transcription Factors ■ Cell Cycle ■ Apoptosis ■ Membrane Receptors ■ Kinases ■ Phosphatases ■ Cellular Proteins



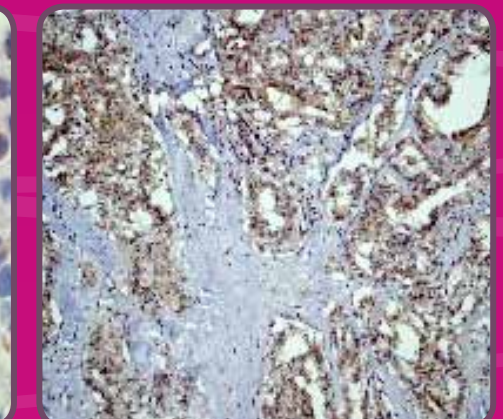
NB600-302 • c-Myc



NB110-57123 • Integrin beta 1



NB100-2176 • NF-kB p65



NB110-57441 • PTEN

Antibodies for Small Cell Lung Carcinoma Research

Catalog #	Product	Host	Clonality	Applications	Species
NB600-590	AKT1 [Ser473] Antibody	Rabbit	Polyclonal	ELISA, ICC, IF, IHC-P, WB	Hu
NBP1-03218	AKT2 [Ser474] Antibody	Rabbit	Polyclonal	IHC-P, WB	Hu, Mu, Rt
NB100-1480	AKT3 Antibody	Goat	Polyclonal	PEP-ELISA, WB	Hu
NB100-56074	APAF1 Antibody	Rabbit	Polyclonal	IHC-P, IP, WB	Hu, Mu, Rt
NB100-104	ATM Antibody	Rabbit	Polyclonal	IF, IHC-P, IP, WB	Hu
NB100-308	ATR (2B5) Antibody	Mouse	Monoclonal	IF, IP, WB	Hu
NB110-55551	Bcl2 (E17) Antibody	Rabbit	Monoclonal	FACS, ICC, IHC-P, IP, WB	Hu, Mu
NB100-56128	cIAP1 Antibody	Rabbit	Polyclonal	IHC-P, IP, WB	Hu
NB500-209	Caspase 9 (LAP6 96-2-22) Antibody	Mouse	Monoclonal	WB	Hu
NB100-1694	Cdk2 Antibody	Rabbit	Polyclonal	ICC, IHC-Fr, IP, WB	Hu, Rt
NB100-2088	Cdk4 Antibody	Rabbit	Polyclonal	IHC-P, IP, WB	Hu, Mu, Rt
NB100-91722	Cdk6 Antibody	Rabbit	Polyclonal	ELISA, IF, IHC-P, WB	Hu, Mu, Rt
NB100-92500	Chk1 [Ser345] Antibody	Rabbit	Polyclonal	ELISA, IHC-P	Hu, Mu, Rt
NBP1-19583	CKS1 Antibody	Rabbit	Polyclonal	WB	Hu, Mu
NB600-302	c-Myc (9E10) Antibody	Mouse	Monoclonal	ELISA, FACS, IF, IHC, IP, WB, ICC	Dr, Hu, Mu
NB100-689	COX2 Antibody	Rabbit	Polyclonal	IHC-Fr, IHC-P, IP, WB	Hu, Mu, Rt
NB110-56901	Cyclin D1 (EP272Y) Antibody	Rabbit	Monoclonal	ICC, IHC, IP, WB	Hu, Rt
NB100-97856	Cyclin E Antibody	Rabbit	Polyclonal	IHC-P	Hu
NB100-56503	Cytochrome C (7H8.2C12) Antibody	Mouse	Monoclonal	ICC, IF, WB	Dr, Eq, Hu, Mu, Rt
NB100-92030	E2F1 Antibody	Rabbit	Polyclonal	ELISA, IHC-P, WB	Hu, Mu
NB120-14292	E2F2 Antibody	Chicken	Polyclonal	IHC, WB	Hu, Mu
NB120-11843	E2F3 (PG30) Antibody	Mouse	Monoclonal	IB, IP	Hu
NB110-56986	FAK (EP695Y) Antibody	Rabbit	Monoclonal	ICC, IHC, IP, WB	Hu, Mu, Rt
NB100-91768	FHIT Antibody	Rabbit	Polyclonal	ELISA, IF, IHC-P, WB	Hu
NB110-57109	IKB alpha (E130) Antibody	Rabbit	Monoclonal	ICC, IHC, IP, WB	Hu, Mu, Rt
NB110-57110	IKK alpha (Y463) Antibody	Rabbit	Monoclonal	FACS, ICC, IHC, IP, WB	Hu, Mu, Rt
NB100-56509	IKK beta (10AG2) Antibody	Mouse	Monoclonal	IP, WB	Hu
NB300-724	iNOS Antibody	Rabbit	Polyclonal	ICC, WB	Ca, Hu, Mu, Rt
NB100-2608	Integrin alpha 2 (HAS-4) Antibody	Mouse	Monoclonal	FACS, IF, IHC, IP	Hu
NBP1-19724	Integrin alpha 3 Antibody	Rabbit	Polyclonal	WB	Hu, Mu
NBP1-50587	Integrin alpha 6 Antibody	Rabbit	Polyclonal	ELISA, IHC-P, WB	Hu
NB110-57123	Integrin beta 1 (EP1041Y) Antibody	Rabbit	Monoclonal	FACS, IHC, WB	Hu, Mu, Rt
NB100-793	MAX Antibody	Goat	Polyclonal	ELISA, WB	Hu
NB110-57266	NF-kappaB-p105/p50 (E381) Antibody	Rabbit	Monoclonal	FACS, ICC, IHC, WB	Hu, Mu, Rt
NB100-2176	NF-kB p65 Antibody	Rabbit	Polyclonal	IHC, IP, WB	Hu, Mu, Rt
NB100-91906	p15 INK4b Antibody	Rabbit	Polyclonal	ELISA, IHC-P, WB	Hu, Mu, Rt
NB110-66664	p27 KIP 1 [Ser10] (EP233(2)Y) Antibody	Rabbit	Monoclonal	IHC, IP, WB	Hu, Mu, Rt
NB200-103	p53 Antibody (PAb 240)	Mouse	Monoclonal	ELISA, FACS, IHC-P, IP, WB	Hu, Mu, Rt
NB110-57350	PI 3 Kinase p85 alpha (EP380Y) Antibody	Rabbit	Monoclonal	FACS, ICC, IHC, IP, WB	Hu, Rt
NB110-57441	PTEN (Y184) Antibody	Rabbit	Monoclonal	FACS, ICC, IHC, IP, WB	Hu, Mu, Rt
NB120-3077	Retinoblastoma 1 (1F8) Antibody	Mouse	Monoclonal	FACS, IF, IHC-Fr, IHC-P, IP, WB	Hu
NB200-323	Retinoic Acid Receptor beta (336) Antibody	Mouse	Monoclonal	WB	Hu
NB100-1466	Retinoid X Receptor alpha Antibody	Goat	Polyclonal	PEP-ELISA, WB	Hu
NB100-1467	Retinoid X Receptor beta Antibody	Goat	Polyclonal	PEP-ELISA, WB	Hu
NB100-91953	Retinoid X Receptor gamma Antibody	Rabbit	Polyclonal	ELISA, IHC-P, WB	Hu, Mu
NBP1-30077	SKP2 Antibody	Rabbit	Polyclonal	IP, WB	Hu