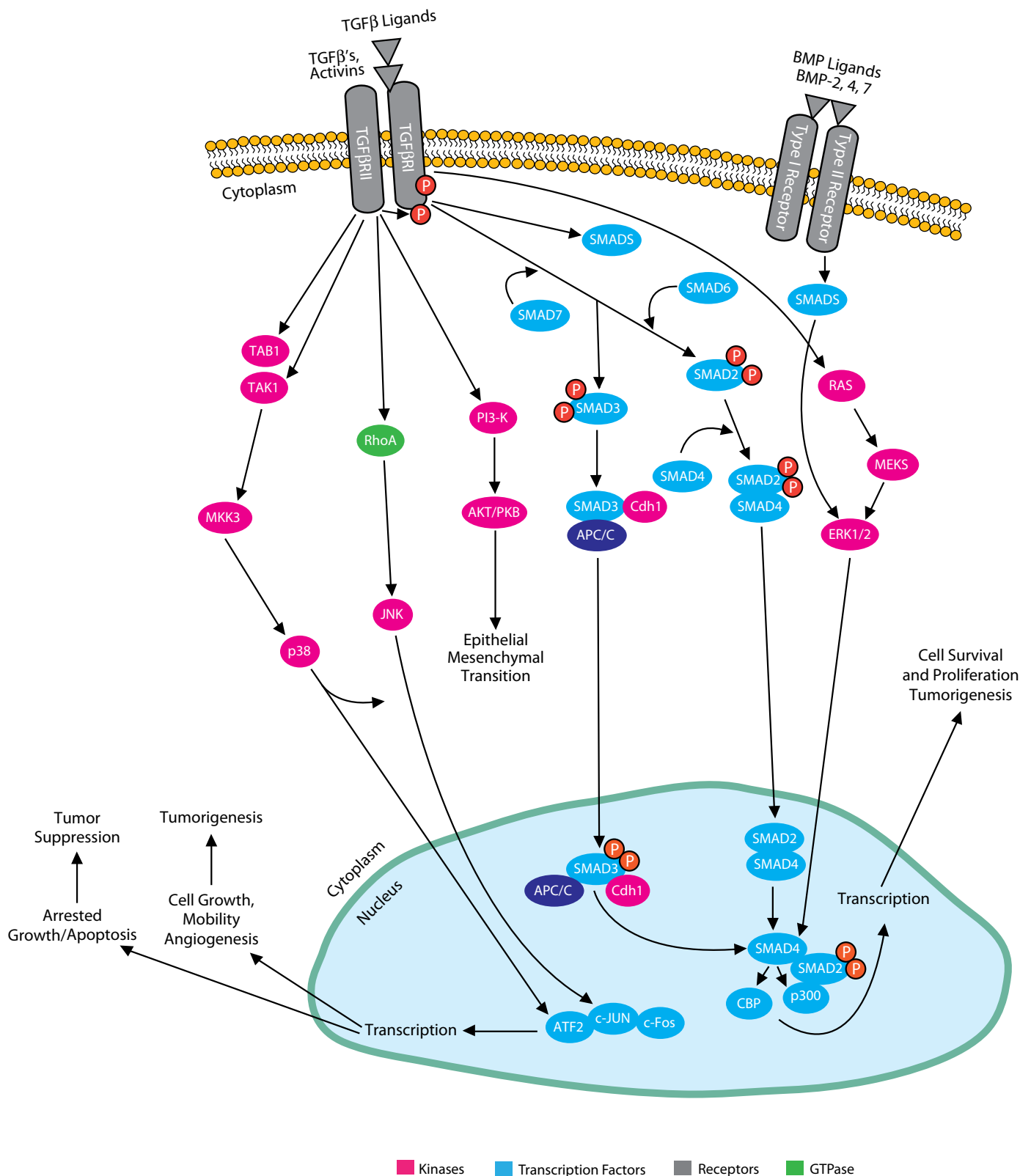


TGF BETA SIGNALING PATHWAY

The TGF beta pathway is involved in the regulations of cellular proliferation, differentiation, embryogenesis, and apoptosis. TGF beta binds its Receptor Type II which then phosphorylates the TGF beta Receptor Type I. The activated Receptor I can then phosphorylate various SMAD molecules which accumulate in the nucleus and act as transcription factors. The TGF beta is also involved in inflammation, immunity and cancer pathways.



Thousands of Antibodies for Cell Signaling Research

- **Validated Antibodies**
- **Over 180,000 Products**
- **Customer Product Reviews**
- **Thousands of Product Citations**

Novus Biologicals offers multiple antibodies for nearly every target in your signaling pathway of interest. Our antibodies have been validated for many applications and we have full validation data as well as recent citations and customers reviews. In addition to our extensive collection of antibodies and antibody related products, we offer a 100% quality guarantee on all of our products.

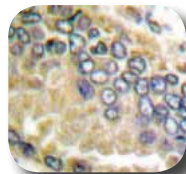
TGF beta 1 [p Tyr369] Antibody NBP1-78398



Immuno-cytochemical analysis in HepG2 cells with FITC (green) using NBP1-78398.

Species: Hu
Applications: ICC/IF

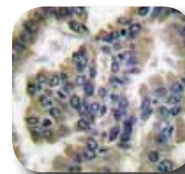
TGF beta Receptor II Antibody NB100-91996



Immuno-histochemical analysis in human lung carcinoma tissue using NB100-91996.

Species: Hu, Mu, Rt
Applications: WB, IHC, IHC-P

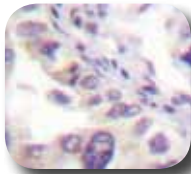
TGF beta 2 Antibody NBP1-67699



Immuno-histochemical analysis of human lung carcinoma tissue using NBP1-67699.

Species: Hu, Mu, Rt
Applications: ELISA, IHC, IHC-P

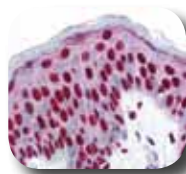
Smad2 Antibody NB100-92057



Immuno-histochemical analysis of human prostate carcinoma using NB100-92057.

Species: Hu, Mu, Rt
Applications: WB, ICC/IF, IHC, IHC-P

Smad3 [p Ser423, p Ser425] Antibody NBP1-02430



Immuno-histochemical analysis of human skin using NBP1-02430.

Species: Hu
Applications: WB, ELISA, ICC/IF, IHC, IHC-P

BMP2 Antibody NBP1-19751



Immuno-histochemical analysis in mouse heart using NBP1-19751.

Species: Hu, Mu, Rt
Applications: WB, IHC, IHC-P

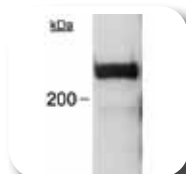
c-Myc Antibody NB600-336



Immuno-histochemical analysis in mouse prostate using NB600-336.

Species: Hu, Mu
Applications: WB, ELISA, ICC/IF, IHC, IHC-P, IP

KAT3B/p300 (RW128) Antibody NB100-507



Western blot analysis in a HeLa nuclear extract using NB100-507.

Species: Hu, Mu, Rt, Mk
Applications: WB, ICC/IF, IP

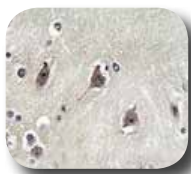
Bmpr2 Antibody NBP2-12997



Immuno-histochemical analysis in human heart tissue using NBP2-12997.

Species: Hu, Mu, Rt
Applications: WB, IHC, IHC-P

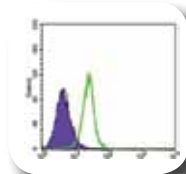
S6K Antibody NBP1-61377



Immuno-histochemical analysis of human brain tissue using NBP1-61377.

Species: Hu, Mu, Rt
Applications: WB, ELISA, ICC/IF, IHC, IHC-P

SMAD4 Antibody (4G1C6) NBP1-51646



Flow cytometric analysis of K562 cells using NBP1-51646.

Species: Hu
Applications: WB, ELISA, FACS, ICC/IF, IHC, IHC-P

RhoA Antibody NBP1-03452



Immuno-fluorescent analysis of rat trigeminal using NBP1-03452.

Species: Hu, Mu, Rt
Applications: WB, IHC, IHC-Fr, IHC-P



TGF beta Antibodies

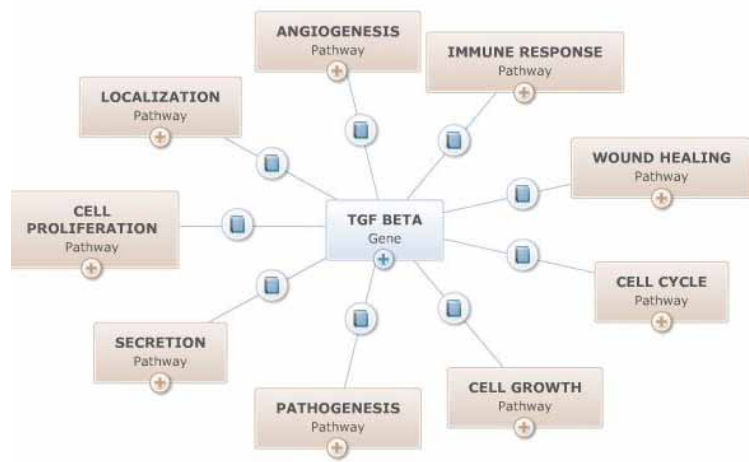
Name	Catalog#	Clonality	Species	Application
TGF beta 1 [p Tyr369]	NB100-91995	Polyclonal	Hu, Mu, Rt	WB, ICC/IF, IHC, IHC-P
TGF beta 1 [p Tyr369]	NBP1-78398	Polyclonal	Hu	ICC/IF
TGF beta 2	NBP1-45892	Polyclonal	Hu, Mu, Rt	WB
TGF beta 3	NB600-1531	Polyclonal	Hu, Mu, Rt	WB, IHC, IHC-P, IP
TGF beta Receptor I (MM0016-7B09)	NB110-85463	Monoclonal	Hu	WB, IHC, IHC-P
TGF beta Receptor I	NBP1-74617	Polyclonal	Hu, Mu, Rt	WB, ELISA, IHC, IHC-P, IP
TGF beta Receptor II	NB100-91994	Polyclonal	Hu, Mu, Rt	WB, IHC, IHC-P
TGF beta Receptor II	NBP1-19434	Polyclonal	Hu, Mu	WB, IHC, IHC-P
TGF beta Receptor III	NBP1-89988	Polyclonal	Hu	IHC, IHC-P

Smad Antibodies

Name	Catalog#	Clonality	Species	Application
Smad1	NB100-92269	Polyclonal	Hu, Mu	WB, ICC/IF, IHC, IHC-P
Smad2 [p Ser465, p Ser467]	NB200-629	Polyclonal	Hu, Mu, Rt	WB, ICC/IF, IHC, IHC-P
Smad2 [p Thr220]	NBP1-04982	Polyclonal	Hu, Mu, Rt	WB
Smad2/3	NBP1-19520	Polyclonal	Hu, Mu, Rt	WB, IHC, IHC-P
Smad3 [p Ser423, p Ser425]	NBP1-02430	Polyclonal	Hu	WB, ELISA, ICC/IF, IHC, IHC-P
Smad3	NBP1-77837	Polyclonal	Hu, Mu, Rt, Bv, Ch, Po, Xp, Ze	WB, ELISA, IHC
SMAD4 (4G1C6)	NBP1-51646	Monoclonal	Hu	WB, ELISA, FACS, ICC/IF, IHC, IHC-P
SMAD5	NB600-962	Polyclonal	Hu, Mu, Rt	WB
SMAD7	NBP1-03163	Polyclonal	Hu, Mu, Rt	WB, IHC, IHC-P
Smad1/5/8/9	NB100-56443	Polyclonal	Hu, Mu, Rt, Ch, Mk	WB
Smad1/5/9	NBP1-19688	Polyclonal	Hu, Mu, Rt	WB, IHC, IHC-P
SMAD9	NBP1-31864	Polyclonal	Hu	WB

Popular TGF beta Pathway Antibodies

Name	Catalog#	Clonality	Species	Application
Activin Receptor Type 1	NB100-79865	Polyclonal	Hu	WB, IHC, IHC-P, PEP-ELISA
Activin Receptor Type 1B	NBP1-67920	Polyclonal	Hu, Mu, Rt	WB, ELISA, ICC/IF
Activin Receptor Type 2A	NB120-10595	Polyclonal	Hu	WB, B/N, ELISA, IHC, IHC-P
Activin Receptor Type 2-like 1	NBP1-30982	Polyclonal	Hu, Mu	WB, IHC, IHC-P
AMHR2 (MIG7)	NBP1-05491	Monoclonal	Hu, Rt	WB, ELISA, ICC/IF
BMP2	NBP1-19751	Polyclonal	Hu, Mu, Rt	WB, IHC, IHC-P
BMP4	NBP1-35357	Polyclonal	Hu	IHC, IHC-P
BMP6 (74219.11)	NB120-10859	Monoclonal	Hu	WB, B/N, ELISA
c-Myc (9E11)	NB200-108	Monoclonal	Hu, Mu, Ba, Ch	WB, ChIP, ELISA, FACS, IHC, IHC-Fr, IHC-P, IP
c-Myc (9E10)	NB600-302	Monoclonal	Hu, Mu, Dr	WB, ELISA, FACS, ICC/IF, IHC, IHC-Fr, IHC-P, IP
c-Myc	NB600-336	Polyclonal	Hu, Mu	WB, ELISA, ICC/IF, IHC, IHC-P, IP
COMP	NB100-2477	Polyclonal	Hu	WB, IHC, IHC-P
Decorin Lysate	NBL1-09744			WB
ERK1 [p Thr202, p Tyr204]	NBP1-19924	Polyclonal	Hu, Mu, Rt	WB, IHC, IHC-P
ERK1/2	NB110-96887	Polyclonal	Hu, Mu, Rt, Bv, Ch, Dr, Sh, Xp	WB, ICC/IF, IHC, IHC-P, FACS
Id1 Lysate	NBL1-11813			WB
Inhibin beta A	NB110-61019	Polyclonal	Hu, Mu, Rt	WB, ELISA, IHC, IHC-P
Inhibin beta B	NBP1-87516	Polyclonal	Hu	IHC, IHC-P
KAT3B/p300 (RW128)	NB100-507	Monoclonal	Hu, Mu, Rt, Mk	WB, ICC/IF, IP
KAT3B/p300 (RW105)	NB100-616	Monoclonal	Hu, Mu, Rt, Mk	WB, ICC/IF, IP
KAT3B/p300 (RW109)	NB100-617	Monoclonal	Hu, Mu, Rt, Mk	WB, ICC/IF, IP
Nodal	NB100-74578	Polyclonal	Hu	EIA, PEP-ELISA
Noggin	NBP1-40119	Polyclonal	Hu, Mu, Rt	WB, ELISA, IHC, IHC-P
PP2A alpha	NBP1-61397	Polyclonal	Hu, Mu, Rt	WB, ELISA, ICC/IF, IHC, IHC-P
PPP2R1B	NBP1-02434	Polyclonal	Hu	WB, IHC, IHC-P
PPP2R5C (TQ11-1G6)	NB100-501	Monoclonal	Hu, Mu	WB, IP
RBX1	NB100-91954	Polyclonal	Hu, Mu	WB
RhoA	NB100-91273	Polyclonal	Hu, Mu, Rt	WB, ICC/IF, IHC, IHC-P
ROCK1	NB100-624	Polyclonal	Hu, Mu	WB, IP
ROCK2	NB100-593	Polyclonal	Hu	WB, IP, PLA
S6K	NBP1-61377	Polyclonal	Hu, Mu, Rt	WB, ELISA, ICC/IF, IHC, IHC-P
SP1 (15H09)	NBP1-74729	Monoclonal	Hu	WB, ELISA, IHC, IHC-P
Thrombospondin (A6.1)	NB100-2059	Monoclonal	Hu, Mu, Rt, Bv, Ca, Eq, Po, Sh	WB, ICC/IF, IHC, IHC-P, IP
Thrombospondin 2	NB100-57398	Polyclonal	Hu, Bv	WB, IHC, IHC-P
TNF alpha	NBP1-19532	Polyclonal	Hu, Mu, Rt	ICC/IF, IHC, IHC-P



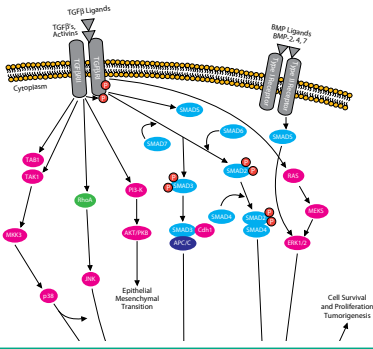
Explore Your Pathways With Novus Explorer

This free bioinformatics tool is designed to facilitate scientific exploration of related genes, diseases and pathways based on co-citations. For more information visit

www.novusbio.com/explorer.

8100 Southpark Way, A-8
Littleton, CO 80120

TGF beta Signaling Pathway Antibodies



U.S. AND INTERNATIONAL CUSTOMERS

Phone: 303.730.1950
888.506.6887
Fax: 303.730.1966
Email: orders@novusbio.com
Web: www.novusbio.com

CANADIAN CUSTOMERS

Phone: 905.827.6400
Phone: 855.668.8722
Fax: 905.827.6402
Email: canada@novusbio.com
Web: www.novusbio.com/canada

EUROPEAN CUSTOMERS

NOVUS EUROPE

Phone: +44 (0)1223 426001
Fax: +44 (0)871 971 1635
Email: europe@novusbio.com

NOVUS BELGIUM

Phone: + 32 2 401 22 53
Fax: + 32 2 401 22 54
Email: belgium@novusbio.com

NOVUS DENMARK

Phone: +45 36 92 78 17
Fax: +45 36 92 78 18
Email: denmark@novusbio.com

NOVUS FINLAND

Phone: +358 9 231 954 48
Fax: +358 9 231 954 49
Email: finland@novusbio.com

NOVUS FRANCE

Phone: +33 1 76 77 45 30
Fax: +33 1 76 77 45 31
Email: france@novusbio.com

NOVUS GERMANY

Phone: 0800 723 5208
Fax: +49 0800 58926 79
Email: germany@novusbio.com

NOVUS ITALY

Phone: +39 02 4032 6786
Fax: +39 02 4032 6340
Email: italy@novusbio.com

NOVUS IRELAND

Phone: +353 1 506 0361
Fax: +353 1 506 0362
Email: ireland@novusbio.com

NOVUS NETHERLANDS

Phone: + 31 2 07168336
Fax: +31 2 07168337
Email: netherlands@novusbio.com

NOVUS NORWAY

Phone: +47 21 03 42 86
Fax: +47 21 03 42 86
Email: norway@novusbio.com

NOVUS SWEDEN

Phone: +46 (0)856619332
Fax: +46 (0)856619333
Email: sweden@novusbio.com

Chat with a Scientist featured on our website: www.novusbio.com

*For research purposes only.
Prices subject to change.
Not for use in humans.*