

# VEGF RECEPTOR 1

## PROTEIN OVERVIEW

VEGF Receptor 1 plays a critical role in vasculogenesis, angiogenesis, cell migration, cell survival, chemotaxis and cancer cell invasion.

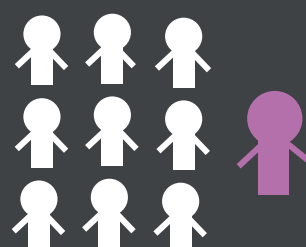
### GENE INFORMATION



Human  
**Name:** FLT1  
**Entrez:** 2321  
**Uniprot:** P17948

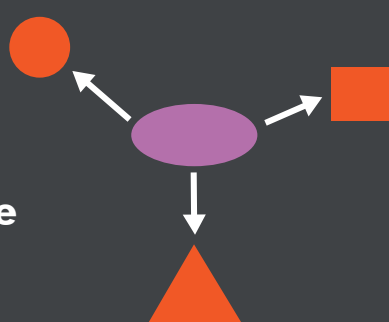
### FAMILY

**Belongs to:**  
Protein kinase  
superfamily



### PATHWAYS

- AKT1
- Apoptosis
- MAP kinase
- TGF-Beta
- VEGF



### MOLECULAR WEIGHT

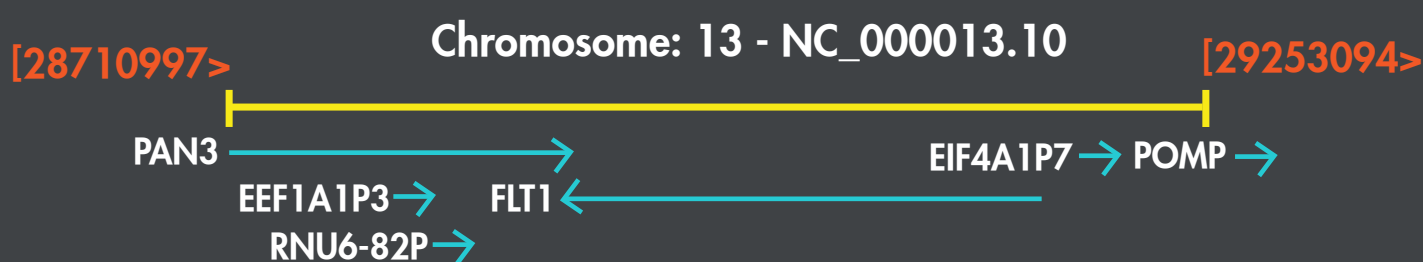


151 kDa

### GENOMIC CONTEXT

**Location:** 13q12

**Sequence:** Chromosome: 13; NC\_000013.10  
(28874483..29069265, complement)



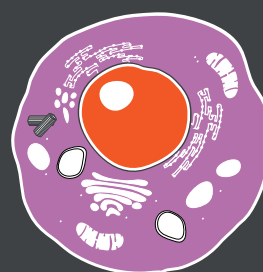
### TISSUE SPECIFICITY

- Expressed vascular endothelial cells
- Isoform 2 is expressed in placenta
- Isoform 3 is expressed in VSMC and corneal epithelial cells
- Detected in several tissues including brain, heart, liver, kidney and normal lung



### SUBCELLULAR LOCALIZATION

- **Isoform 1:** Cell Membrane
- **Isoforms 2, 3, 4:** Secreted
- **Isoforms 5, 6, 7:** Cytoplasm



### INTERACTING PROTEINS

- VEGFA
- VEGFB
- PGF
- PTPRB
- PIK3R1



### DISEASES

- Pre-eclampsia
- Tumor Angiogenesis
- Neoplasms
- Hypertensive Disease
- Pathological Neovascularization

