

Technical Support Questionnaire – ICC

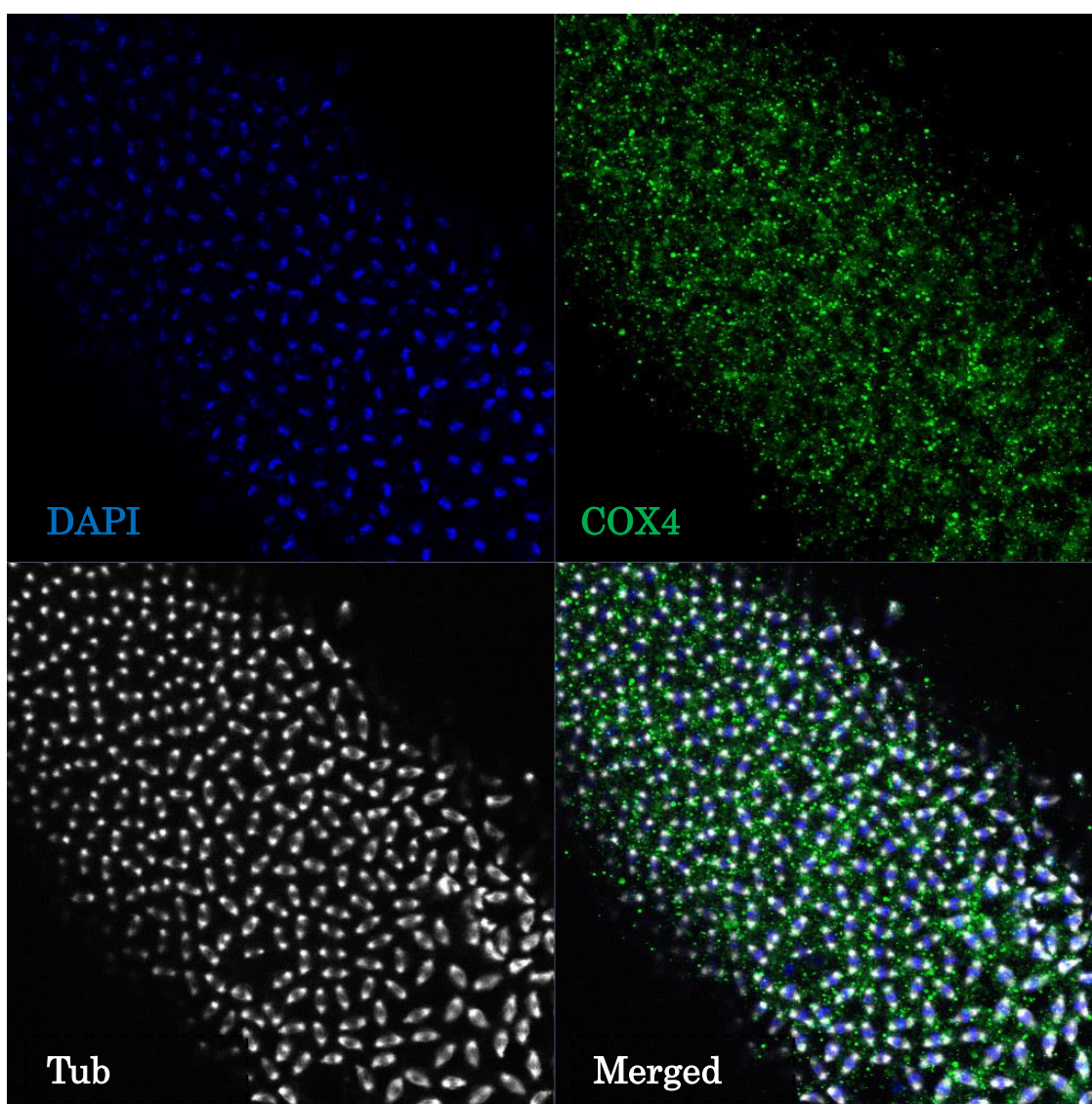
Catalog #: NB110-39115

Lot Number: B-1

Antibody Storage Conditions: -20 C

Staining Expectations: Embryo MT

Observation & Concerns: Mitochondria stained near mitotic spindle



Sample Information

Cell Lines Tested: *Drosophila* embryo

Species: *Drosophila melanogaster*

Test Sample Preparation: Methanol fixation after 50% bleaching

Fixation Solution and Conditions: 100% Methanol fixation, RT, 2 min

Blocking

Solution: 5% NGS, 0.2% saponin in PBS

Time and Temperature: 60min RT

Washing

Wash Buffer: No

Time: No

Repetitions: No

Primary Antibody

Diluent: same with blocking solution

Dilutions Tested: 1:100

Time and Temperature: 4 C, O/N

Washing

Wash Buffer: 0.2% saponin in PBS

Time: 20 min

Repetitions: 3 times

Secondary Antibody

Manufacturer and Catalog Number: Jackson ImmunoResearch, 711-545-152

Host Species: Donkey

Diluent:

Dilutions Tested: 1:200.

Time: 60 min

Temperature: RT

Washing

Wash Buffer: 0.2% saponin in PBS

Time: 20 min

Repetitions: 3 times

Detection

System: Zeiss LSM 730

Excitation Wavelength: FITC channel

Emission Filter:

Procedure: Normal confocal microscope

Detection Time: 3 min for each channel

Describe staining seen with this antibody: Mitochondria of drosophila embryo were stained with the antibody near mitotic spindle at early stage of embryo development. Staining quality is not bad, but not the best.

Controls

Positive Control: No

Negative Control: No