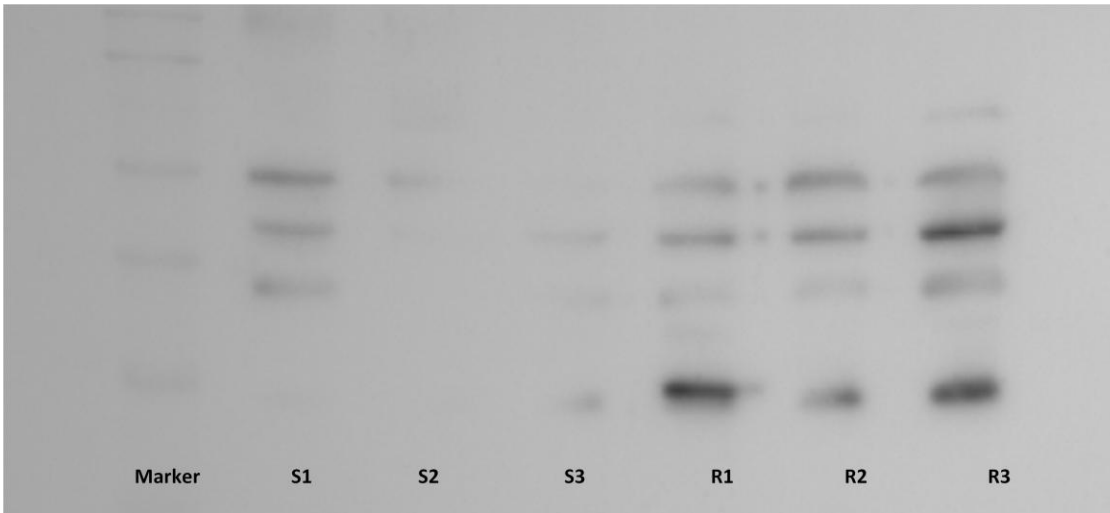


## **Innovators Reward Form – Western Blot**

**Name:** Sridevi Betha  
**Catalog #:** NBP1-31593  
**Lot Number:** 39897  
**PO/Order Number:** 824836.



Please upload an image of your western blot by clicking on the center of the box.

**WB Image Description (Please provide labels for all lanes):** Marker, Susceptible (S1, S2, S3), Resistant (R1, R2, R3)

### **Sample Information:**

Cell Line or Tissue: plant tissue  
Species: *Amaranthus palmeri*  
Treatment: none

### **Controls:**

Positive Control: [Click here to enter text.](#)  
Negative Control: [Click here to enter text.](#)  
Loading Control (please attach additional images if applicable): Not done yet

**Total Protein Loaded:** 100ug

**Antibody Storage Conditions:** -20 degrees

### **Electrophoresis:**

Gel Percentage: 11%  
Electrophoresis Conditions: SDS-PAGE  
Voltage: 100V  
Time: 1:30 hr

**Membrane Transfer:**

Method (Submersion/Semi-dry): submersion  
Membrane Type (PVDF/Nitrocellulose): PVDF  
Time: sometimes over night at 30V, sometimes 1hr at 100V  
Voltage: 30 or 100V

**Blocking:**

Blocking Solution: 5% non fat dry milk  
Time: 30 min

**Primary Antibody:**

Dilution: 1:500-750  
Diluent Buffer: TBST  
Incubation Time: overnight  
Incubation Temperature: 4 degrees

**Washing Conditions:**

Wash Solution: TBST  
Time and Repetitions: 5-10 min, 3 times

**Secondary Antibody**

Manufacturer and Catalog #: Jackson Immuno Research Laboratories Inc and 711-035-152  
Secondary description: donkey anti-rabbit polyclonal, HRP conjugated  
Dilution: 1:50000  
Diluent Buffer: TBST  
Incubation Time: 30-60min  
Incubation Temperature: room temperature

**Detection Method:**

Detection: Chemifluorescence  
Procedure: G-BOX from Syngene  
Development Time: 2 minutes

**Molecular weight of band(s):** 48.25KD

**Comments on Antibody Performance:** gives multiple bands