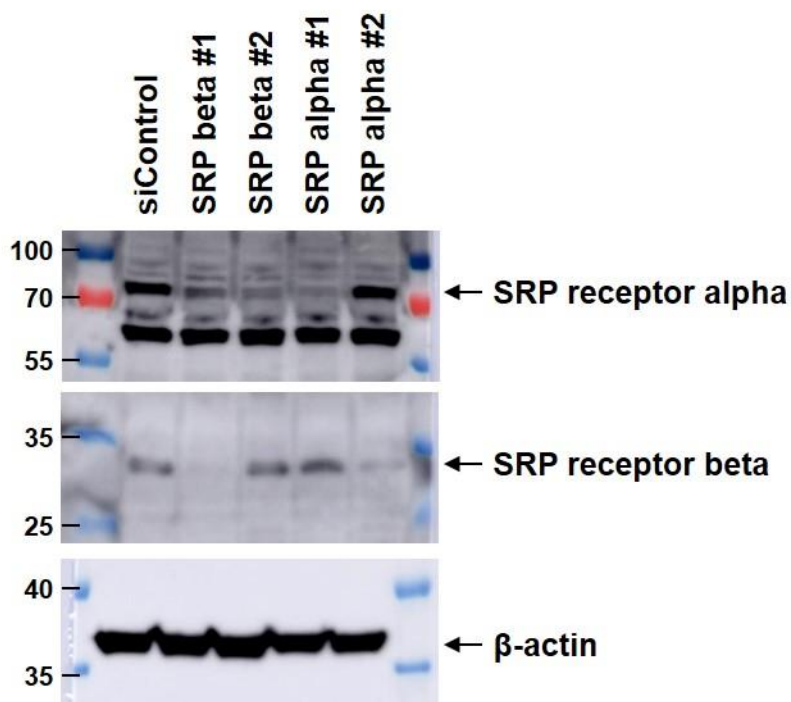


Western Blot

Name: Kwon Jeong

Catalog #: NBP2-02028

Lot Number: A001



WB Image Description (Please provide labels for all lanes): [Click here to enter text.](#)

HeLa cells were depleted of either SRP beta or SRP alpha using specific siRNA for 48 hr.

Sample Information:

Cell Line or Tissue: HeLa cells

Species: Human

Treatment: Not treated.

Controls:

Positive Control: No

Negative Control: si Control

Loading Control (please attach additional images if applicable): Please see the attached file the loading control.

Total Protein Loaded: 20ug

Antibody Storage Conditions: -20°C

Electrophoresis:

Gel Percentage: 10%

Electrophoresis Conditions: SDS running buffer

Voltage: 200V

Time: 90min

Membrane Transfer:

Method (Submersion/Semi-dry): Submersion

Membrane Type (PVDF/Nitrocellulose): Nitrocellulose

Time: 80min

Voltage: 100V

Blocking:

Blocking Solution: 5% skim-milk

Time: 30min

Primary Antibody:

Dilution: 1:1000

Diluent Buffer: TBST buffer

Incubation Time: 12hr

Incubation Temperature: 4°C

Washing Conditions:

Wash Solution: TBST

Time and Repetitions: Three times for 10 min

Secondary Antibody

Manufacturer and Catalog #: ThermoFisher, A27033

Secondary description: Rabbit

Dilution: 1:10,000

Diluent Buffer: TBST buffer

Incubation Time: 1hr

Incubation Temperature: RT

Detection Method:

Detection: ECL kits

Procedure: 1:1 dilution

Development Time: 10 sec

Molecular weight of band(s): 30kDa

Experimental Concerns and Observations: