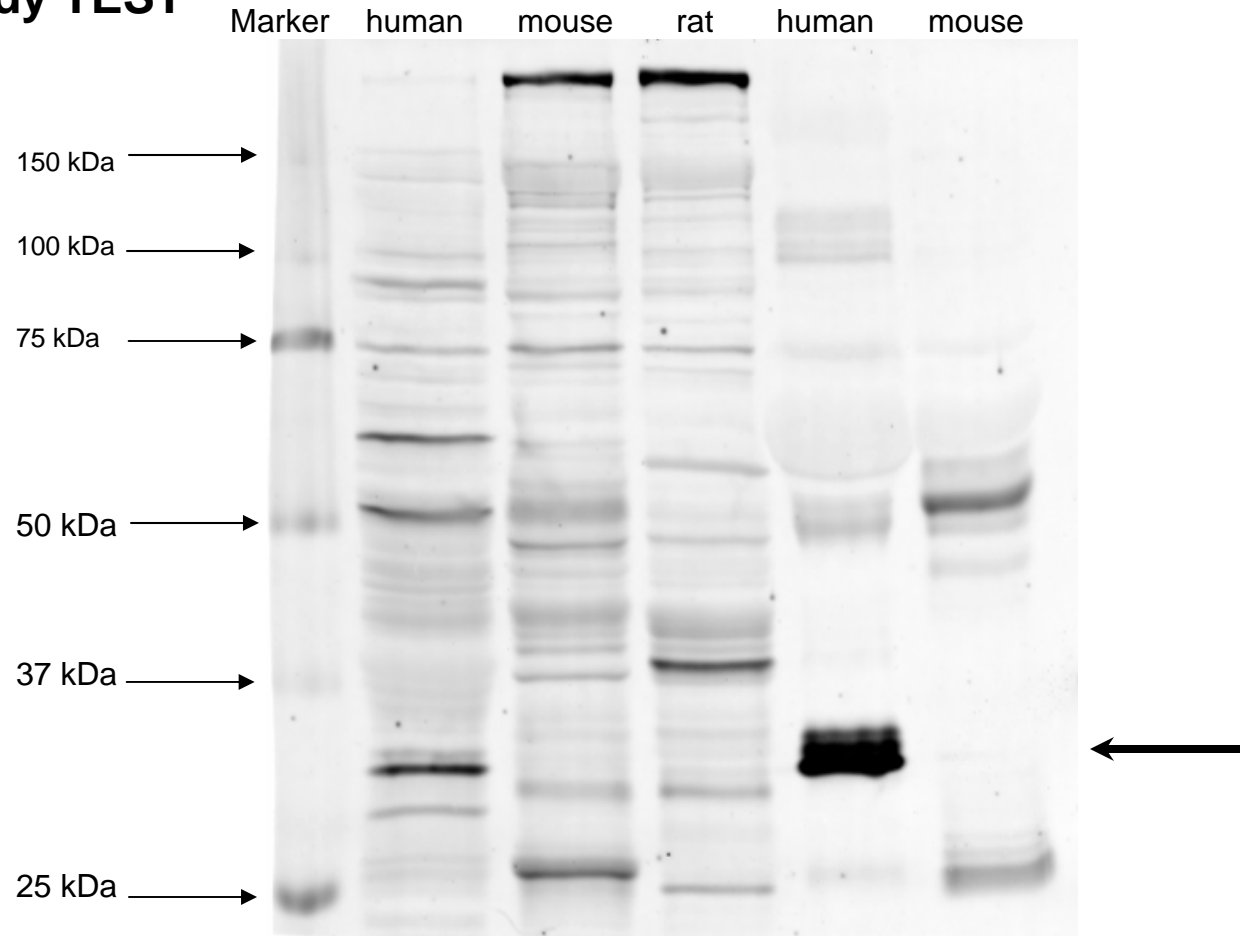


ApoE antibody TEST



50 ug protein per lane for liver lysate and 0.5 ul of plasma at 9% SDS. Samples are loaded onto the gel as the following order: human liver lysate, mouse liver lysate, rat liver lysate, human plasma, and mouse plasma.

ApoE antibody: NB110-60531SS (1:1000)

Conclusion: There are multiple bands in liver lysate from all three species. However, human plasma sample gives a very strong and clear band around 37 kDa. In human liver lysate, the same band also is visible. Thus, this antibody is working well in WB but only recognizes human origin of ApoE.