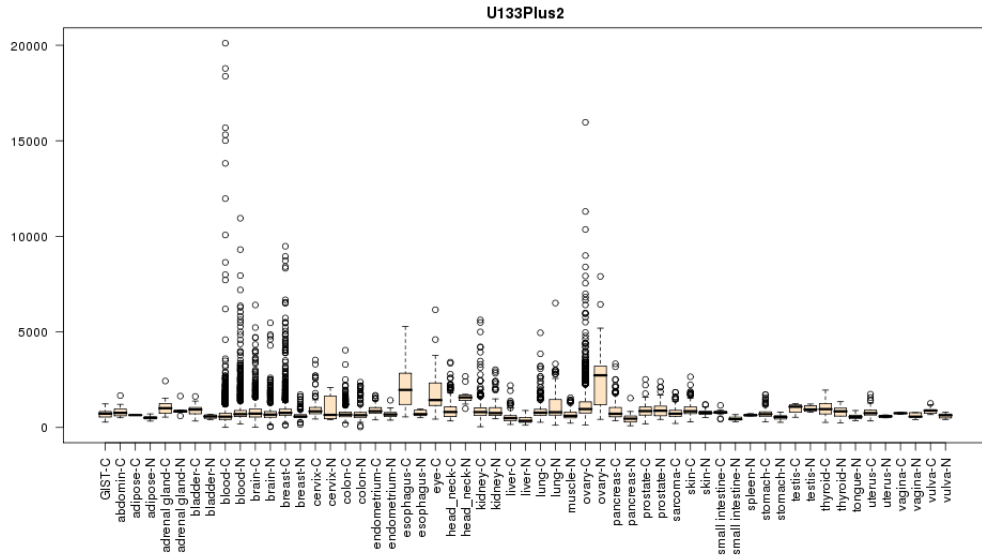


Superbiochips 2013. 09. 30

Antibody Novus ADPRHL2 NBP1-88835 rabbit polyclonal

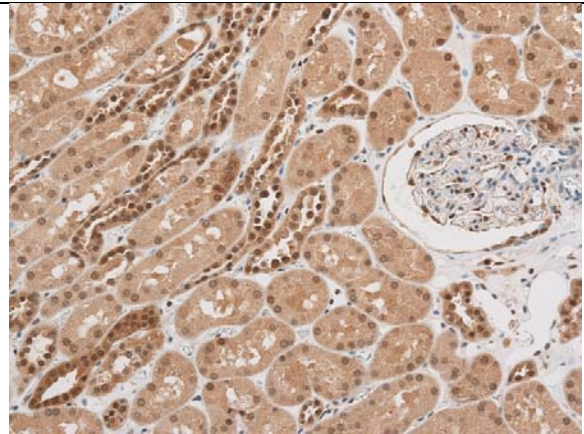
Public mRNA

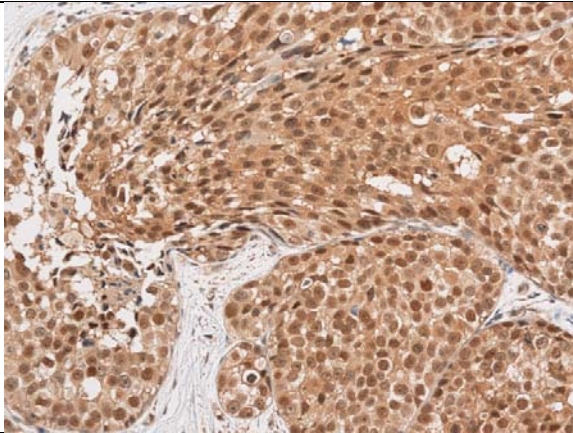


Staining condition  
Ventana Benchmark XT  
UltraView DAB Kit  
1:500

Tested tissues  
Normal: 30 organs  
Cancer: 29 cancers

Specific staining  
Normal kidney cortex:  
nucleus and cytoplasmic



	Breast carcinoma: nuclear and cytoplasmic staining	
Less specific staining		
Comments		
Conclusion	Useful antibody	