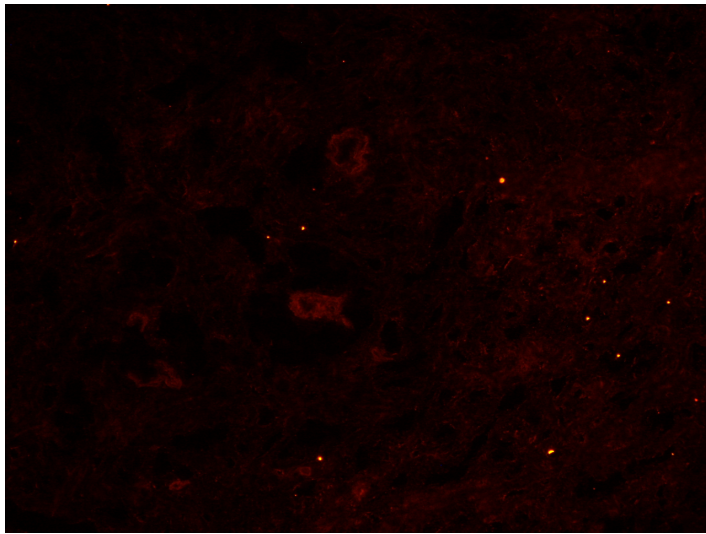
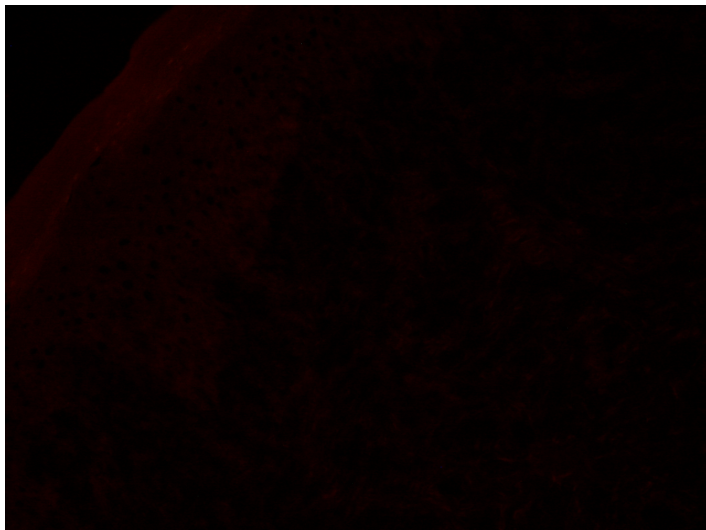


### **Indirect immunofluorescence staining with anti-Angiopoietin-1 on chicken comb**

Frozen tissue sections from normal White Leghorn (NWL) chicken comb were incubated with mouse anti-Angiopoietin-1 (Novus MM0019-26B10) diluted 1:50 in PBS/1% IgG-free BSA (Jackson) over night at 4°C, washed for 30 min in PBS, followed by detection with RRX-conjugated AffiniPure F(ab')<sub>2</sub> donkey anti-mouse IgG (Jackson 715-296-150) diluted 1:250 in PBS/1% IgG-free BSA for 30 min at room temperature, washed for 30 min in PBS and mounted with Mowiol (Calbiochem). Pictures were taken with Nikon Eclipse E800. Original magnification 200x.



Angiopoietin-1 staining on chicken comb



Isotype control on chicken comb

Roswitha Sgonc, Experimental Pathophysiology and Immunology, Biocenter, Innsbruck Medical University, Innsbruck, Austria